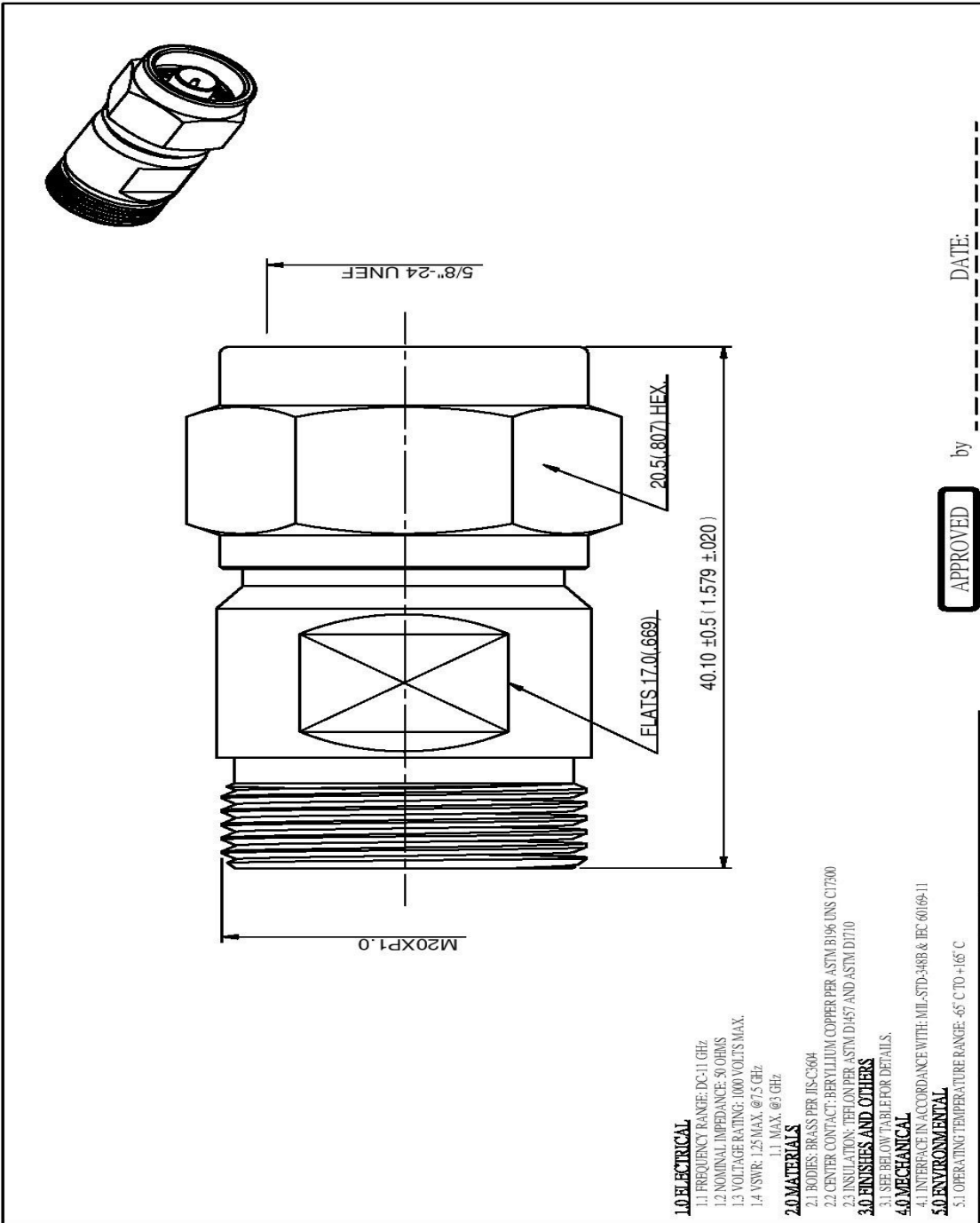


Datasheet

Stock No:1706935

RS Pro

STRAIGHT 4.1/9.5 JACK-N PLUG ADAPTER



APPROVED by _____ DATE: _____

DESCRIPTION		STRAIGHT 4.1/9.5 JACK-N PLUG ADAPTER	
DRAWN	品名	4011100590001	DATE
Jackie	TOLERANCE	(50.0)	REV.
CHECK	X ±0.2	ROHS COMPLIANT	11.22.17
Arc	.XX ±0.1	DWG.NO.	A-0
APPROVAL	.XXX ±0.05	UNIT	
Jenny	ANGLE ± 5°	mm(in)	
	SCALE	3:1	

7 SHELL	BRASS	1	WHITE BRONZE 80 μ" MIN.
6 CHASSIS	BRASS	1	WHITE BRONZE 80 μ" MIN.
5 GASKET	SILICONE	1	RED
4 BODY	BRASS	1	WHITE BRONZE 80 μ" MIN.
3 WASHER	BRASS	1	NONE
2 INSULATION	TEFLON	1	NONE
1 CENTER CONTACT	BERYLLIUM COPPER	1	SILVER 70 μ" MIN.
NO DESCRIPTION	MATERIAL	QTY	FINISH

1.0 ELECTRICAL

- 1.1 FREQUENCY RANGE: DC-1 GHz
- 1.2 NOMINAL IMPEDANCE: 50 OHMS
- 1.3 VOLTAGE RATING: 1000 VOLTS MAX.
- 1.4 VSWR: 1.25 MAX. @ 7.5 GHz
- 1.1 MAX. @ 3 GHz

2.0 MATERIALS

- 2.1 BODIES: BRASS PER JIS-C504
- 2.2 CENTER CONTACT: BERYLLIUM COPPER PER ASTM B196 UNS C1700
- 2.3 INSULATION: TEFLON PER ASTM D1457 AND ASTM D1710

3.0 FINISHES AND OTHERS

- 3.1 SEE BELOW TABLE FOR DETAILS.

4.0 MECHANICAL

- 4.1 INTERFACE IN ACCORDANCE WITH: MIL-STD-3488 & IEC 60169-11

5.0 ENVIRONMENTAL

- 5.1 OPERATING TEMPERATURE RANGE: -65 C TO +165 C