

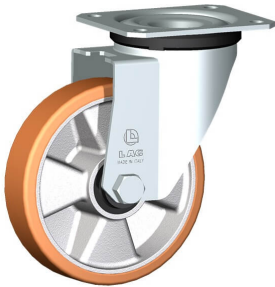
WHEEL T 125X30/40 RB SWIVEL FORK M22L/50

Wheel series T

Wheels with cast polyurethane coating 95 Sh.A on aluminium hub.  
Available with ball or roller bearings.  
Wheel fitted with standard roller bearing.

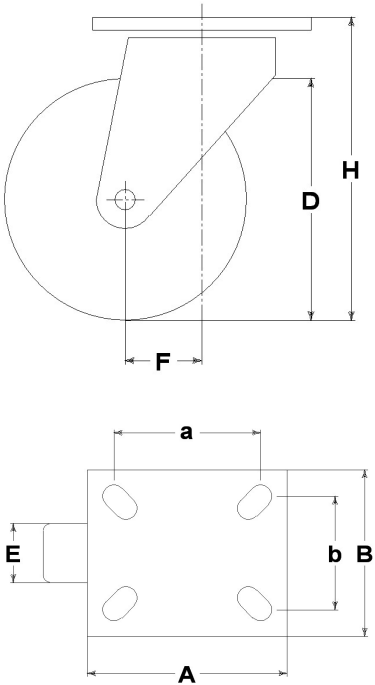
Castor series M22

M22 series, Medium-light pressed steel fork assemblies; swivel version has double ball raceways. Zincplated.



Technical data

Wheel diameter	D	125 mm
Tyre width	E	30,0 mm
Bore diameter	d	15 mm
Weight article		1,100 kg
Hub width	L	40 mm
Overall height	H	159 mm
Top plate outer dimensions	AxB	102x83 mm
Bolt hole spacing	axb	80x60 mm
Fixing bolt diameter	g	M8
Offset	F	49 mm
Fork width	U	50 mm
Load Capacity		200 kg



Related Articles

- Spare part wheel: [8309](#)
- Version with thread-guards: [26058PF](#)
- Version with footguard: [26058PP](#)
- Version with trailing brake: [26058FR](#)
- Version with trailing brake and footguard: [26058FRPP](#)

GENERAL INFORMATION / RECOMMENDATIONS AND WARNINGS

The cited text and the complete catalogue in their most up-dated versions are available in the OEM's website page [www.lagspa.it/downloads](http://www.lagspa.it/downloads). The dimensions, descriptions, specifications and illustrations herein are indicative and subject to variations without notice. The fact that products are illustrated herein does not necessarily imply they are available from stock nor does it place us under any obligation to supply them. Tests carried out refer to the original products with original accessories: the replacement of one of the components with others of different manufacture might prevent the same results from being achieved and will automatically invalidate any guarantee. Please contact our technical service concerning any special application.