

REFERENCE SPECIFICATIONS

-NFC 93425 (in compliance with HE 507)

PHYSICAL CHARACTERISTICS

-INSULATOR MATERIAL: THERMOPLASTIC UL94V0
 -CONTACT MATERIAL: PHOSPHOR BRONZE

-ACCESSORIES: BRASS
 -SHELLS: STEEL

ELECTRICAL CHARACTERISTICS

-NOMINAL CURRENT: 7.5A
 -CONTACT RESISTANCE: <= 7.3 m ohms
 -CONTACT/CONTACT : >=1000 V
 -CONTACT/GROUND : >=1200 V
 -INSULATION RESISTANCE: >=5000 MOhms

ENVIRONMENTAL CHARACTERISTICS

- CLIMATIC CATEGORY: 55/125/21
 TEMPERATURE RANGE -55°C TO +125°C
 DAMP HEAT STEADY STATE 21 DAYS
 SALT SPRAY 24 HOURS

MECHANICAL CHARACTERISTICS

- RETENTION AGAINST TORQUE: - Threaded insert: 0.7 N.m Maximum
 - Female screw : 0.5 N.m Maximum

NOTE RoHS INFORMATION

- The "LF" products meet european union Directives and other country regulations as described in GS-47-0004.
- Termination plating spec:
Ni + Gold/GxT
- Active area plating spec:
Ni + Gold/GxT
- Shell plating :2 to 4µm Cu + Nickel + 3 to 10µmm Sn,pure bright
- Accessories: Sn pure bright + nickel
- Packaging spec: See GS-14-920

DBL13W3S043A00LF

Series ←

Shell size: **E A B C D** ←
 see sheet 2

Front accessory definition ←
 see sheet 2

- Blank** :without accessory
- L** :threaded insert M3
- O** :threaded insert UNC 4-40

Layout of contacts (see sheet 3) ←

Contacts ←

- S** :Socket

Plating ←

- Blank** signal solder bucket 200 matings/unmatings
- 043** signal solder bucket 500 matings/unmatings

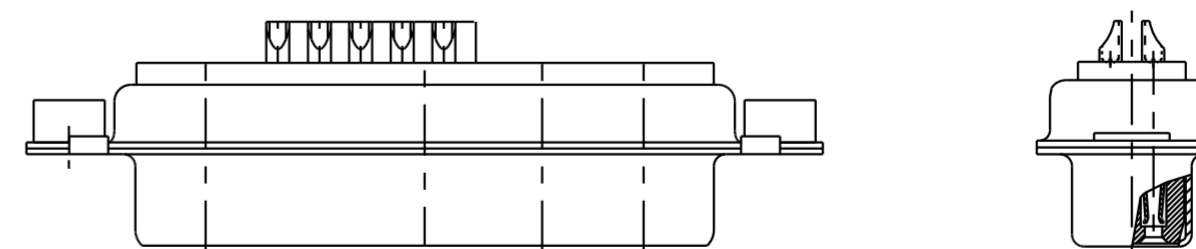
PCB accessory definition ←

- A** without accessory on PCB

Power contacts ←

- 00** without power contact

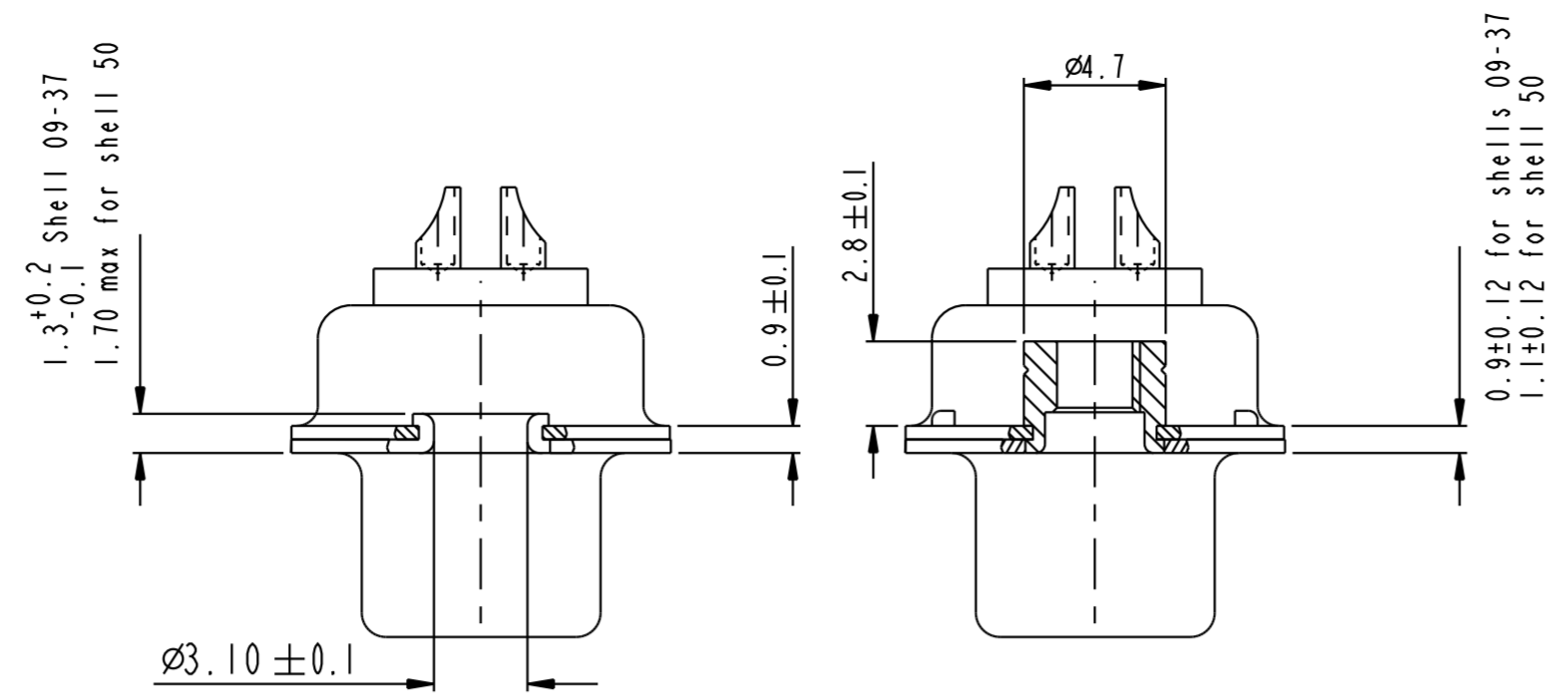
See note RoHS



13W3 FOR EXAMPLE

PROVISIONAL DRAWING

spec ref	dr	M PESSON	2005-10-11	projection	MM	size	A2	scale	1:1
tolerance std	eng	GREGAR M	2005-10-11			ecn no	LS07-0273	rel level	Released
ISO 1101	chr	GREGAR M	15-03-2024						
ISO 406	appr	ALEX BABU	15-03-2024						
TOLERANCES UNLESS OTHERWISE SPECIFIED		product family		D SUB -					
surface	linear	0.X	±0.30	SUB FEMALE DW		dwg no	C01-8639-2303		rev
		0.XX	±0.1	MIXED POWER + SOLDER BUCKET				E1.1	
		0.XXX	±0.05	cat. no.		Product - Customer Drw		sheet 1 of 7	
ISO 1302	angular	0°	±22°						



FRONT ACCESSORY	Blank without	L insert M3
		O insert UNC 4.40
PCB ACCESSORIES	A without	A without

PART NUMBER	MATINGS/ UNMATINGS	FRONT ACCESSORY	PCB ACCESSORIES
D*xWxSA00LF	200	without	without
D*LxWxSA00LF	200	insert M3	without
D*OxWxSA00LF	200	insert UNC 4.40	without
D*xWxS043A00LF	500	without	without
D*LxWxS043A00LF	500	insert M3	without
D*OxWxS043A00LF	500	insert UNC 4.40	without

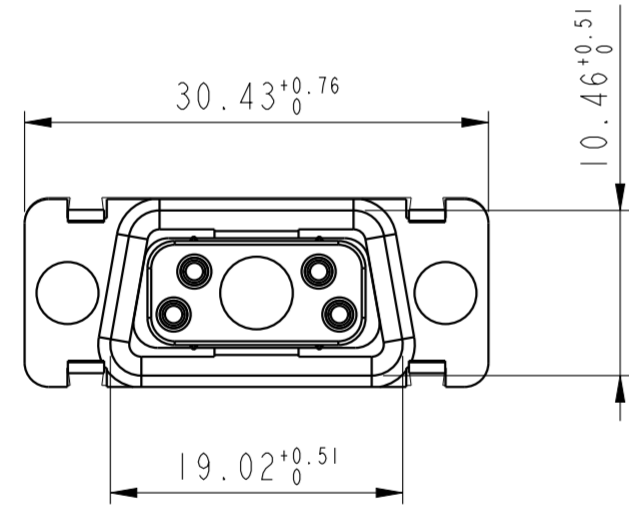
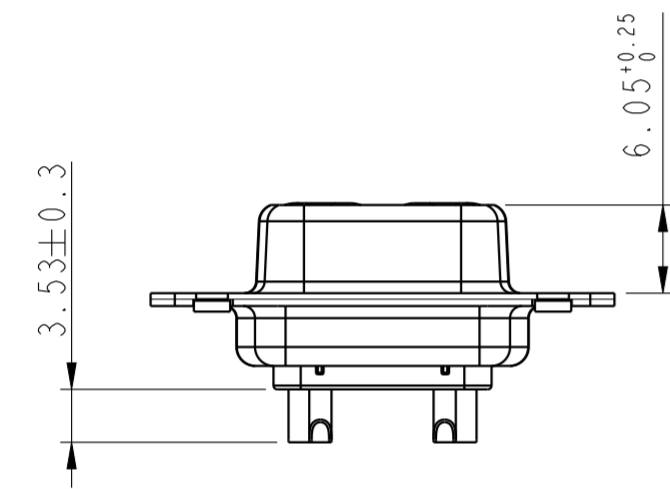
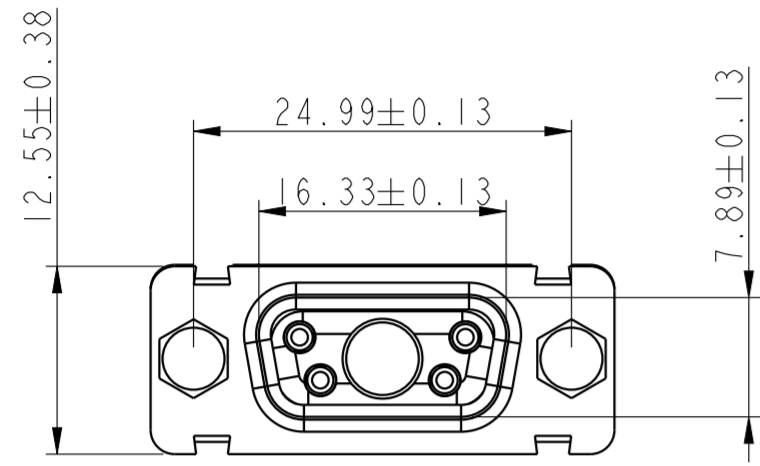
shell size	LAYOUTS
*	xWx
E	5W1
A	11W1
A	7W2
B	21W1
B	17W2
B	13W3
B	9W4
C	25W3
C	21WA4
C	27W2
D	47W1
D	24W7
D	36W4

Amphenol
FCi

© 2020 Amphenol Corporation

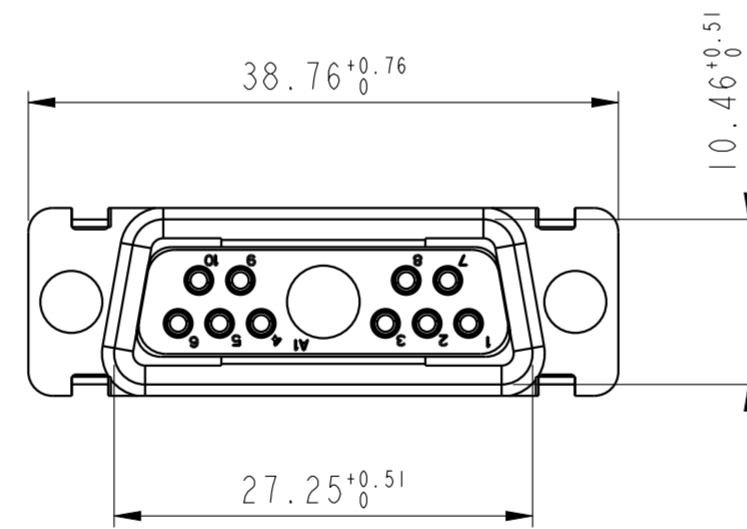
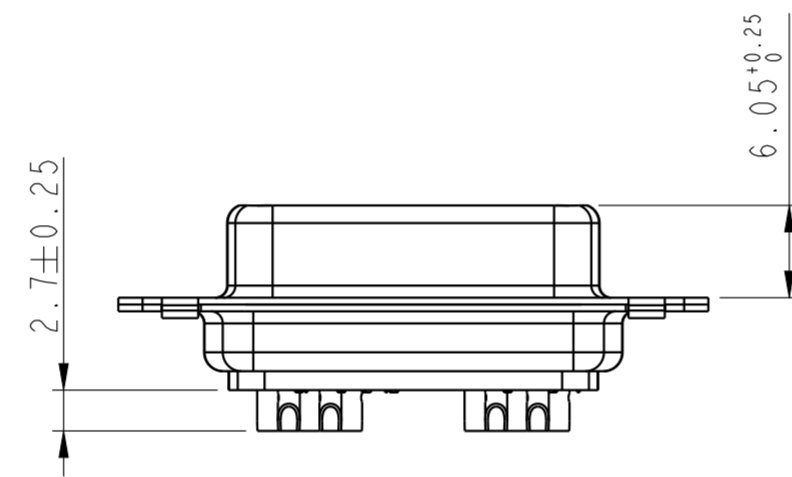
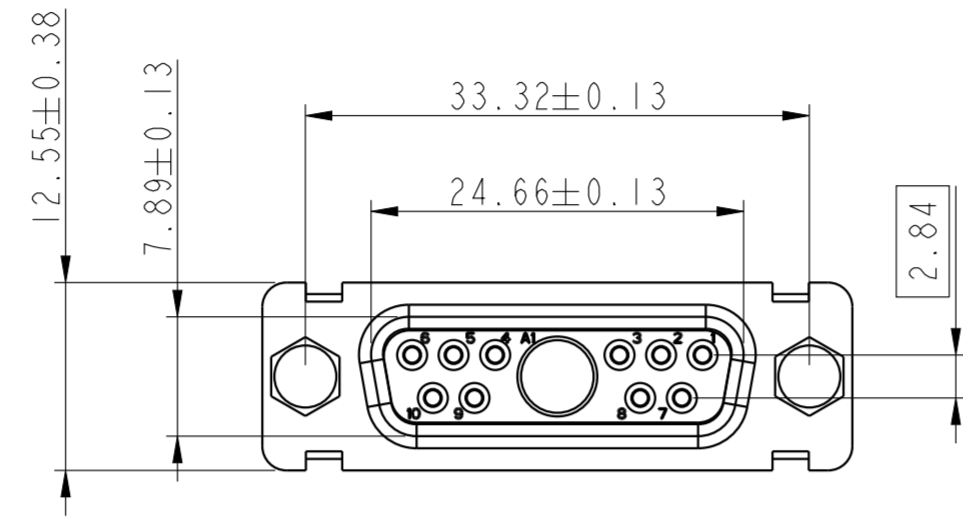
spec ref	dr	M PESSON	2005-10-11	projection	MM	size	A2	scale	1:1
tolerance std	eng	GREGAR M	2005-10-11			ecn no	LS07-0273	Released	
ISO 1101	chr	GREGAR M	15-03-2024						
ISO 406	appr	ALEX BABU	15-03-2024						
TOLERANCES UNLESS OTHERWISE SPECIFIED		product family		D SUB -		rel level			
surface	linear	0.X	±0.30		SUB FEMALE DW		dwg no C01-8639-2303	rev E IE. I	
		0.XX	±0.10		MIXED POWER + SOLDER BUCKET				
		0.XXX	±0.05						
ISO 1302	angular	0°	±2°	cat. no.	-	Product - Customer Drw		sheet 2 of 7	

5W1

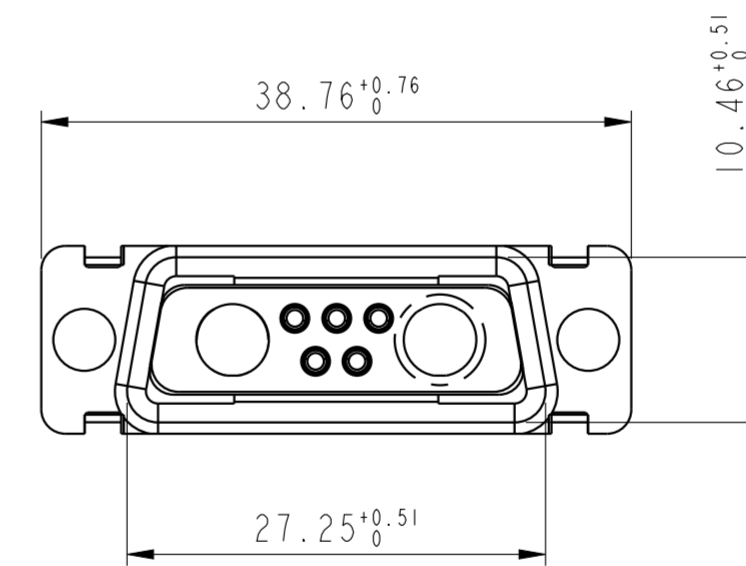
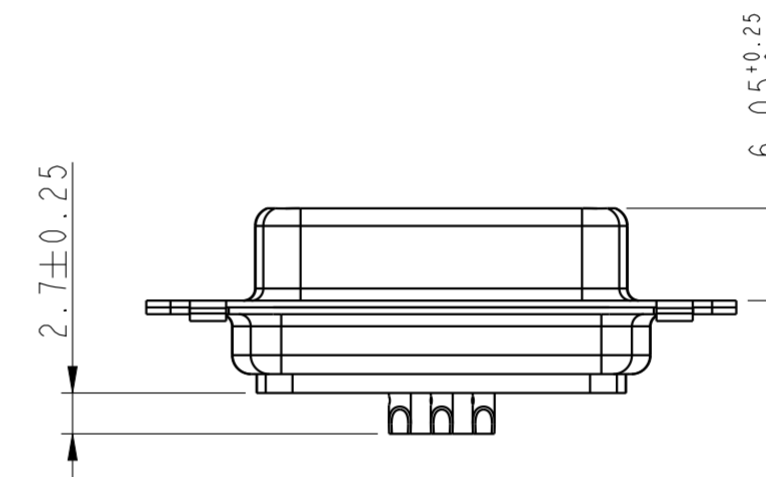
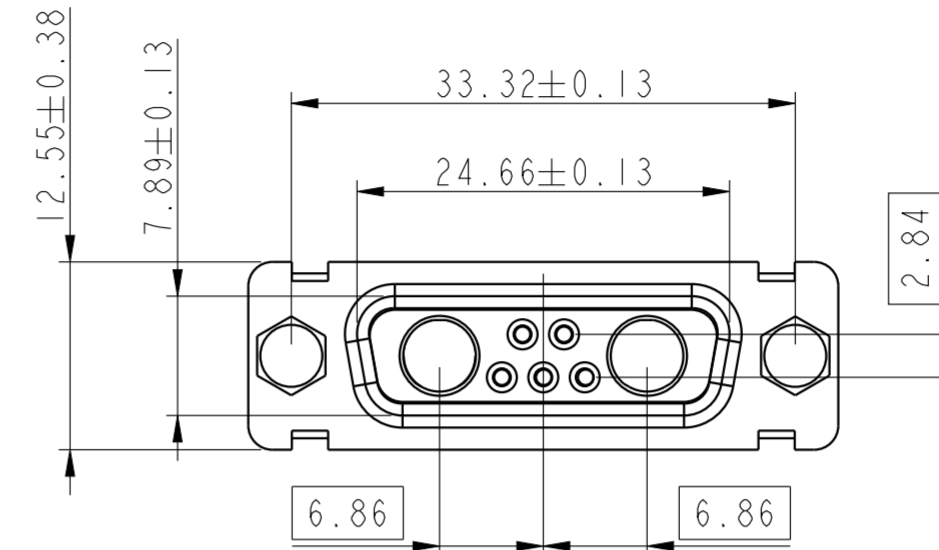


Floating signal contacts

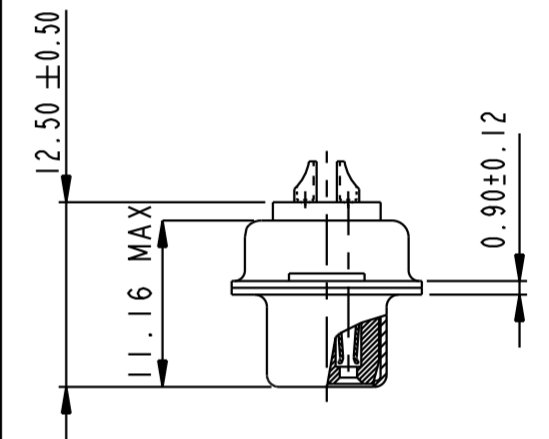
11W1



7W2



SIDE VIEW FOR LAYOUTS: E A B C

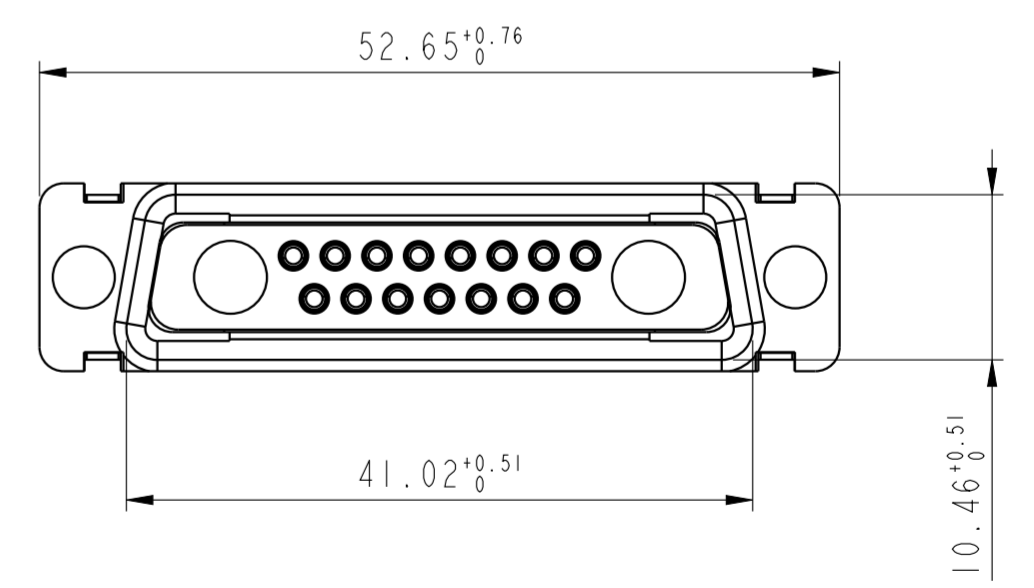
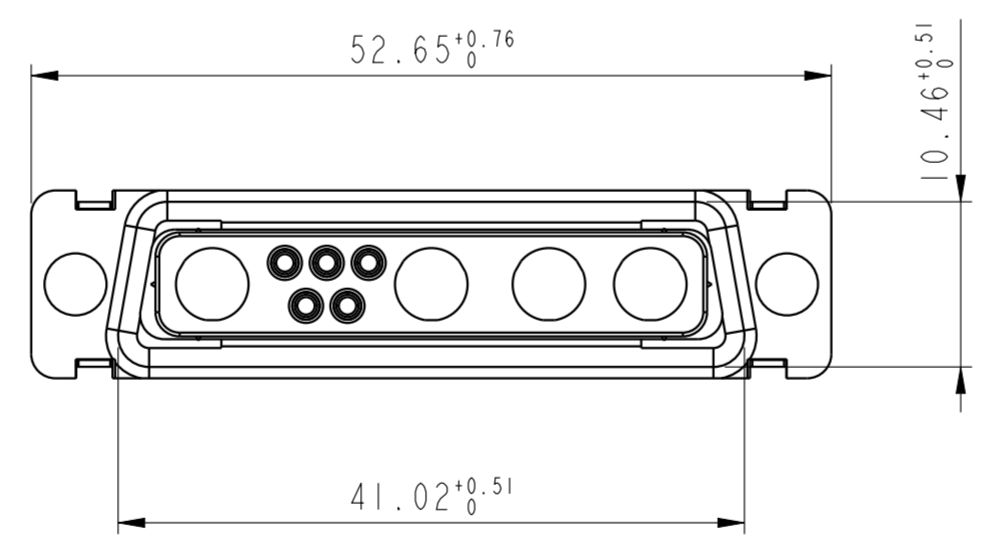
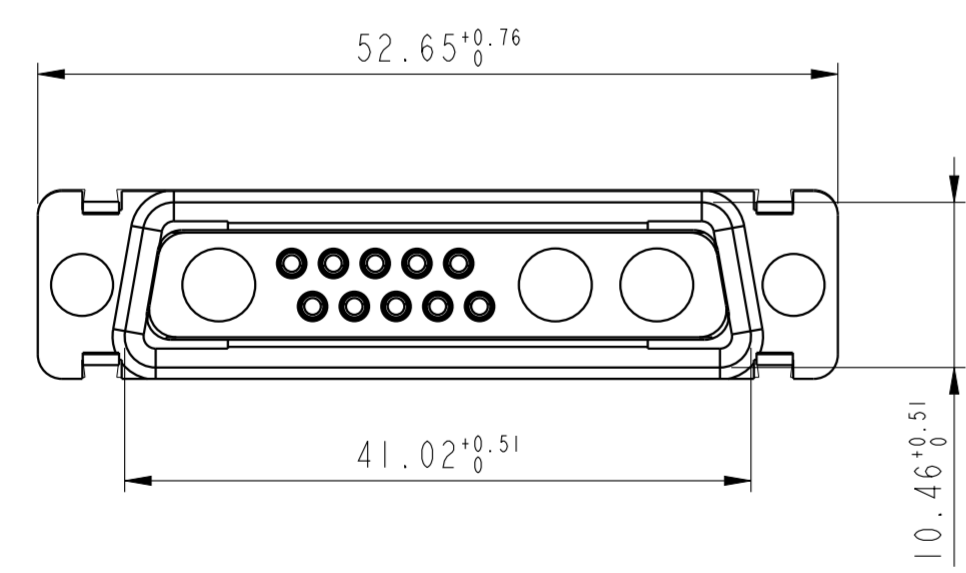
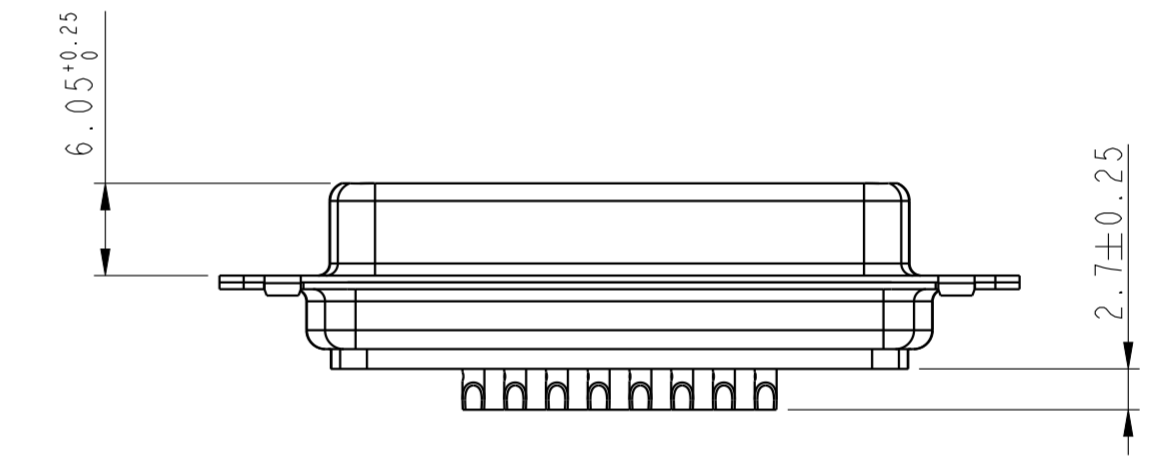
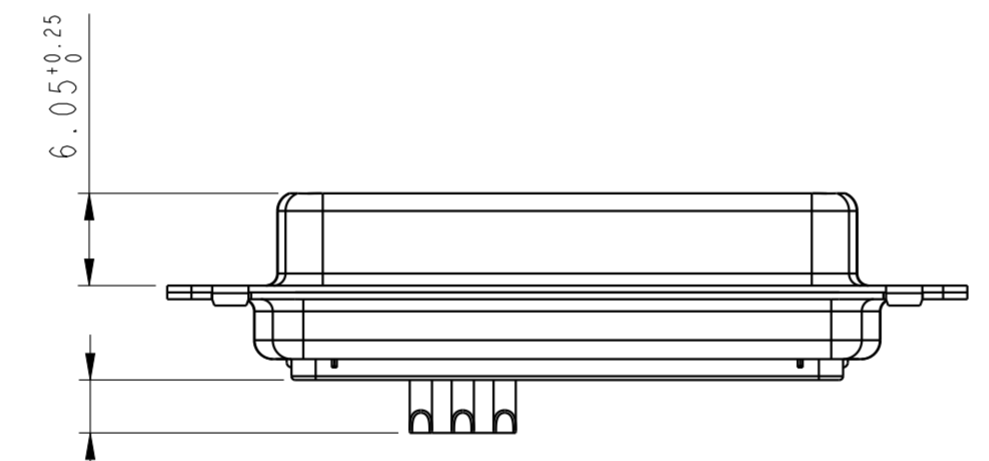
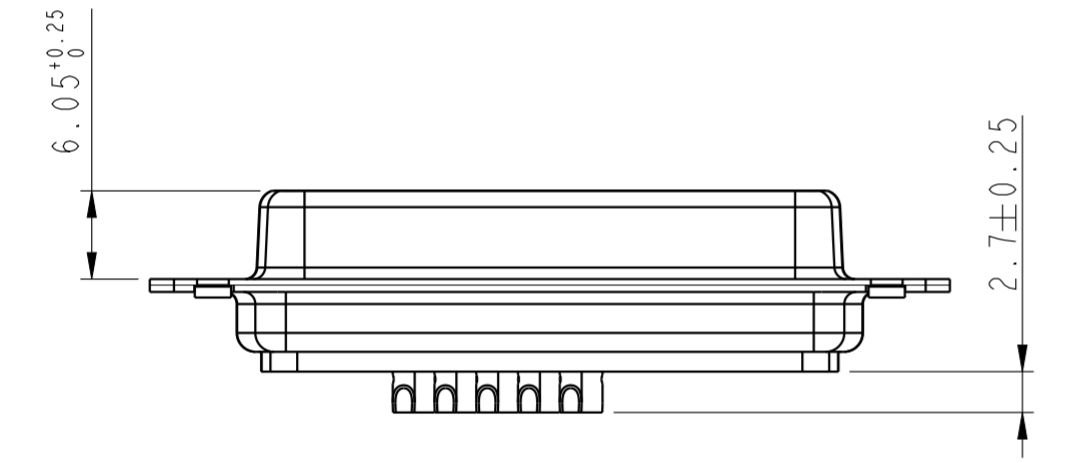
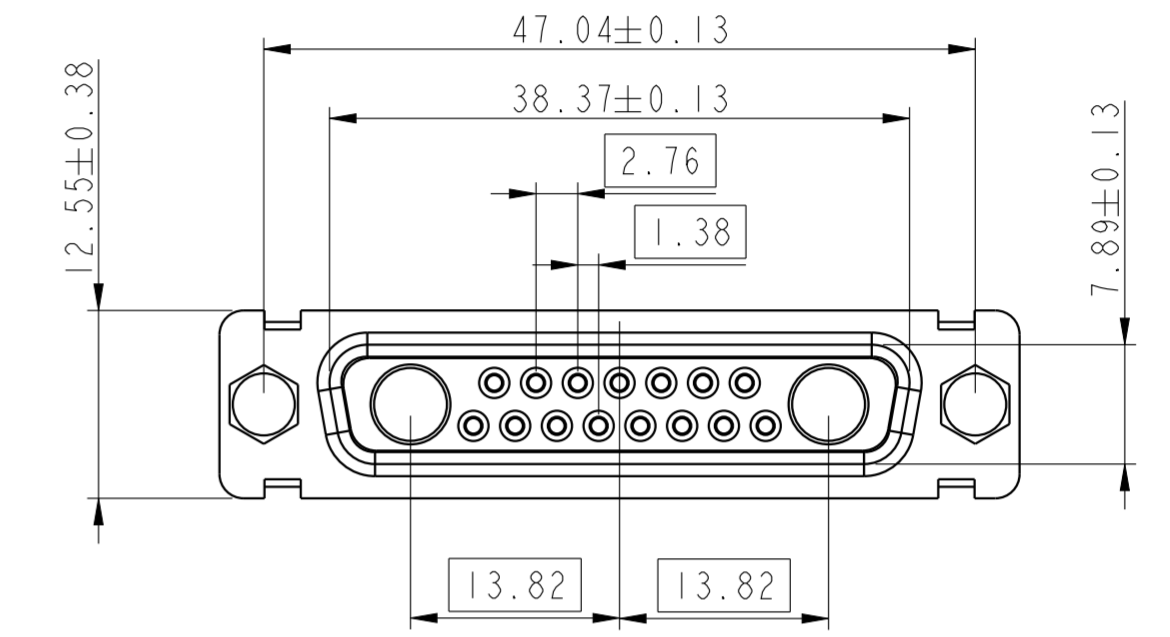
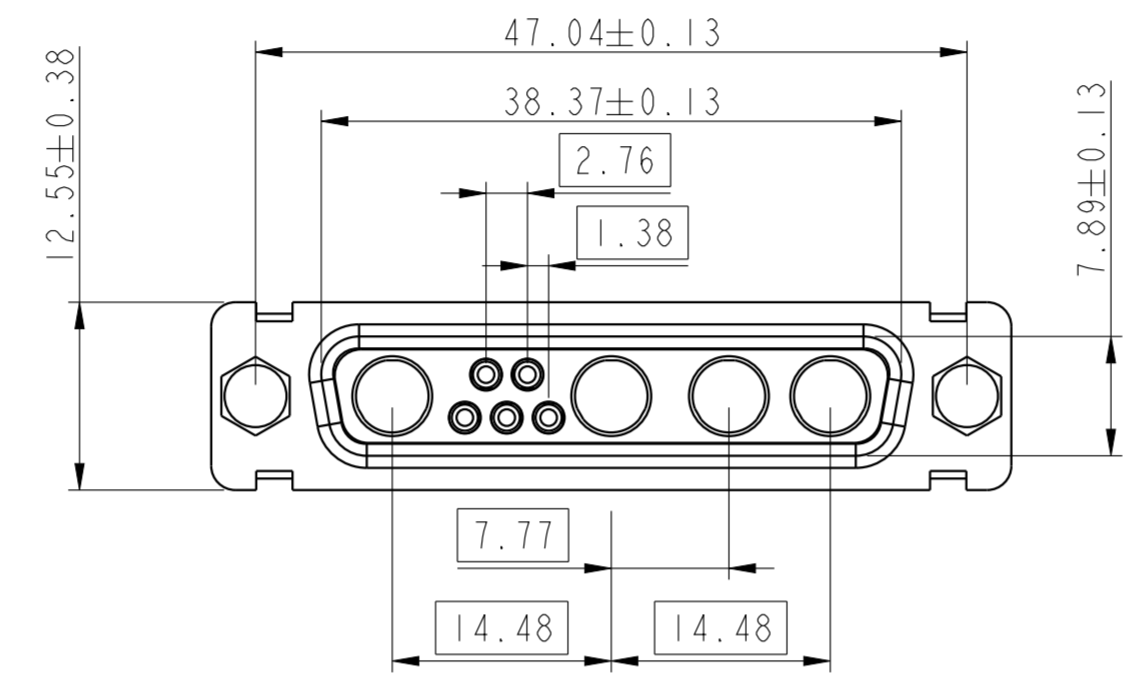
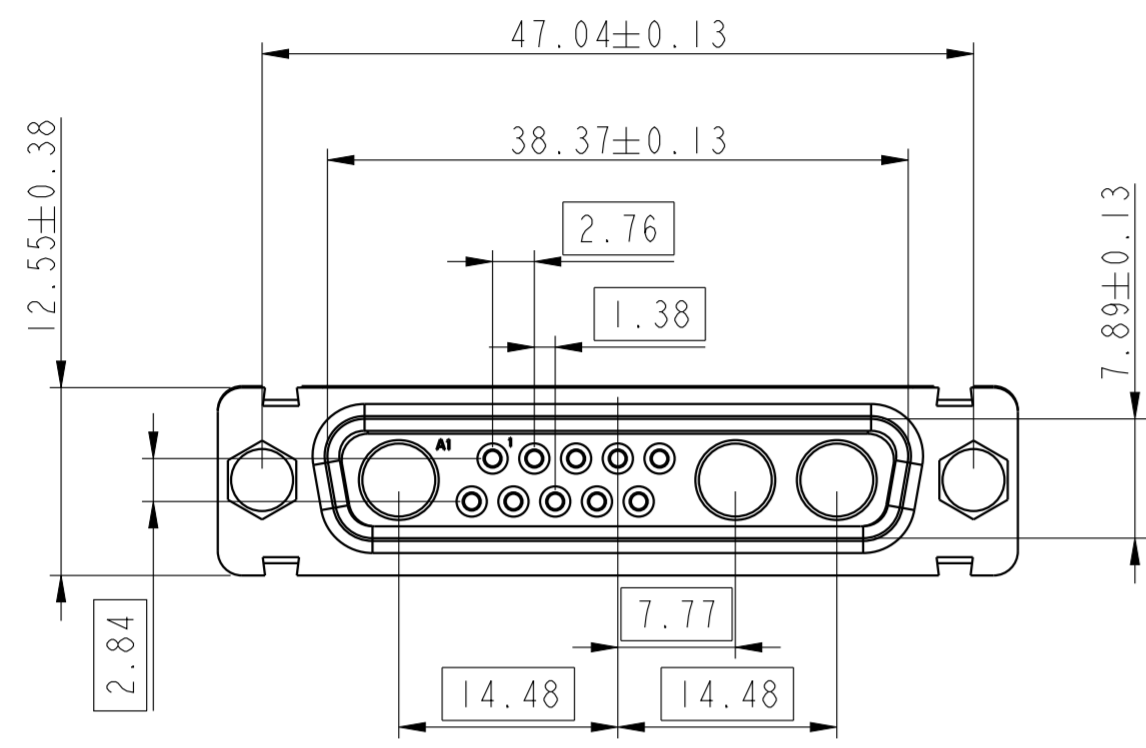


spec ref	dr	M PESSON	2005-10-11	projection	MM	size	A2	scale	2:1		
tolerance std	eng	GREGAR M	2005-10-11			ecn no	LS07-0273	rel level	Released		
ISO 1101	chr	GREGAR M	15-03-2024								
ISO 406	appr	ALEX BABU	15-03-2024								
TOLERANCES UNLESS OTHERWISE SPECIFIED		Amphenol FCI		product family		D SUB -		rel level			
surface	linear	0.X	±0.30	SUB FEMALE DW				dwg no	C01-8639-2303	rev	E
		0.XX	±0.10	MIXED POWER + SOLDER BUCKET				Product - Customer Drw		sheet 3 of 7	
		0.XXX	±0.05	cat. no.							
ISO 1302	angular	0°	±2°								

13W3

9W4

17W2



Floating signal contacts

Amphenol FCI

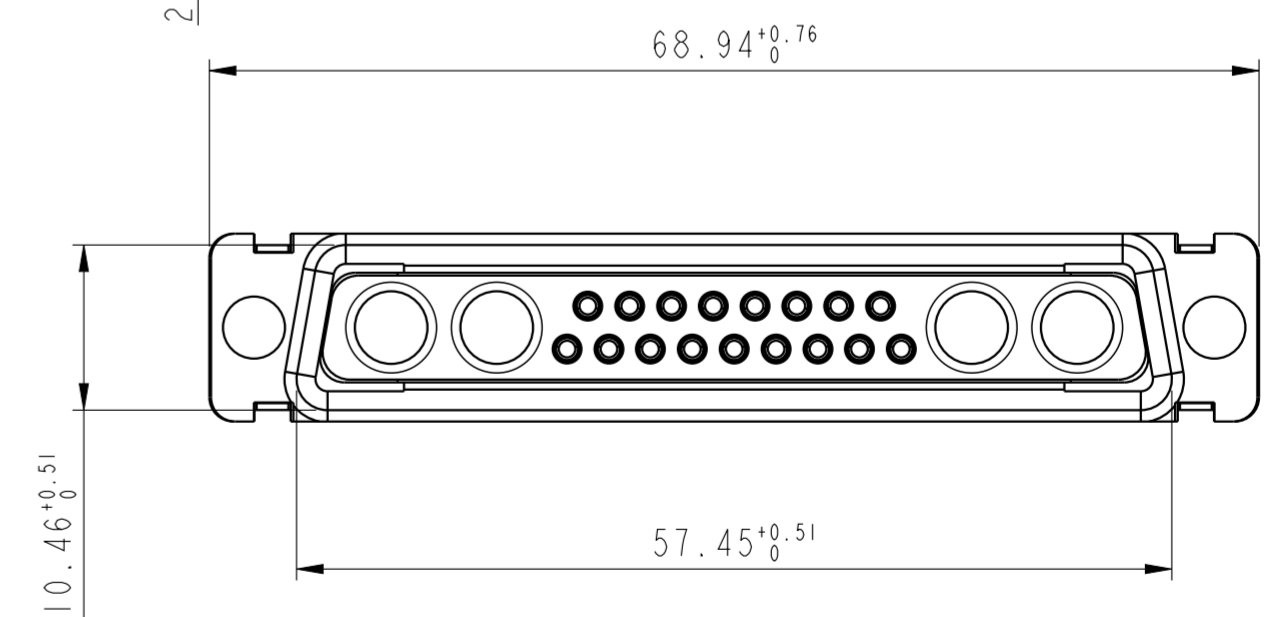
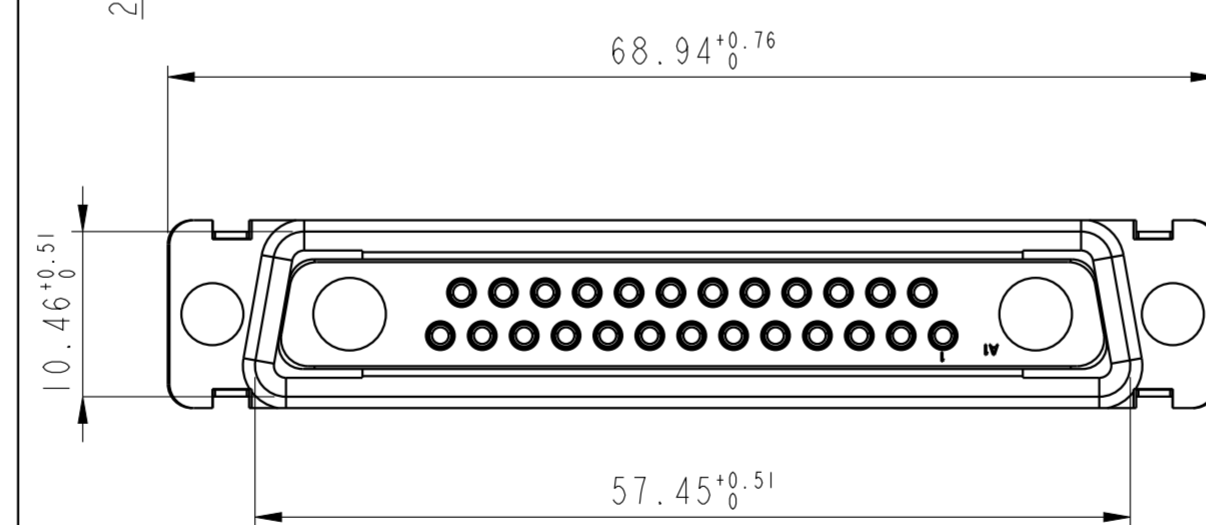
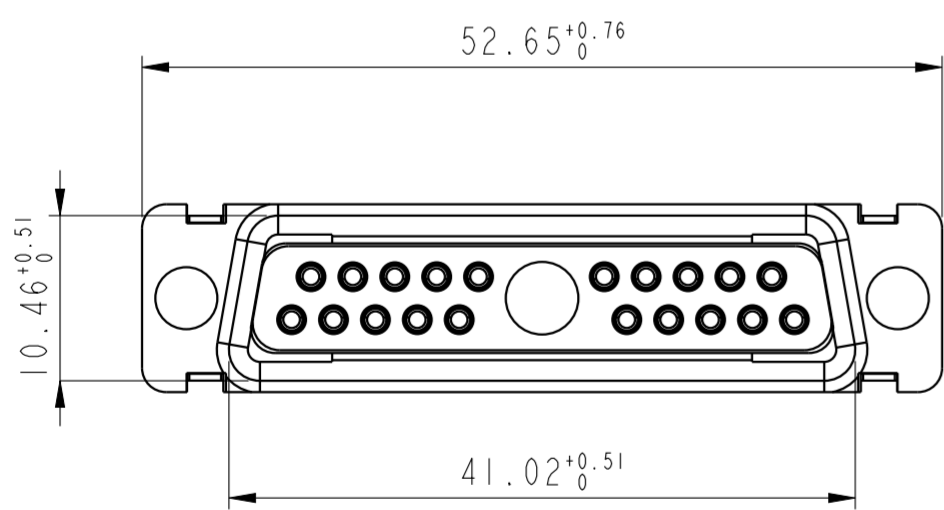
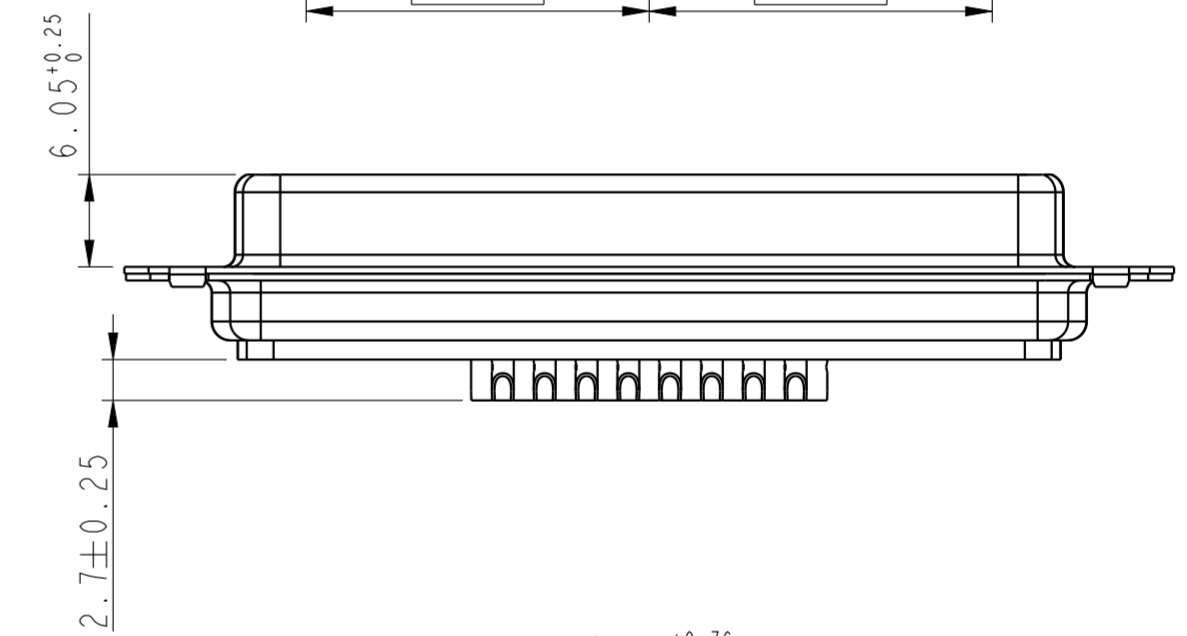
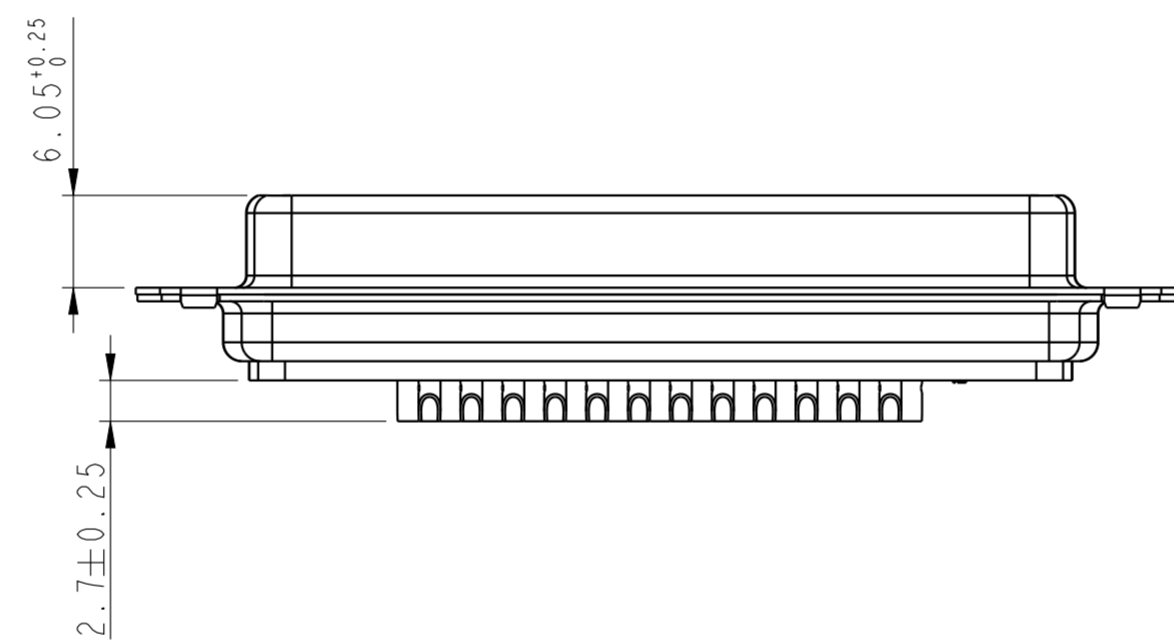
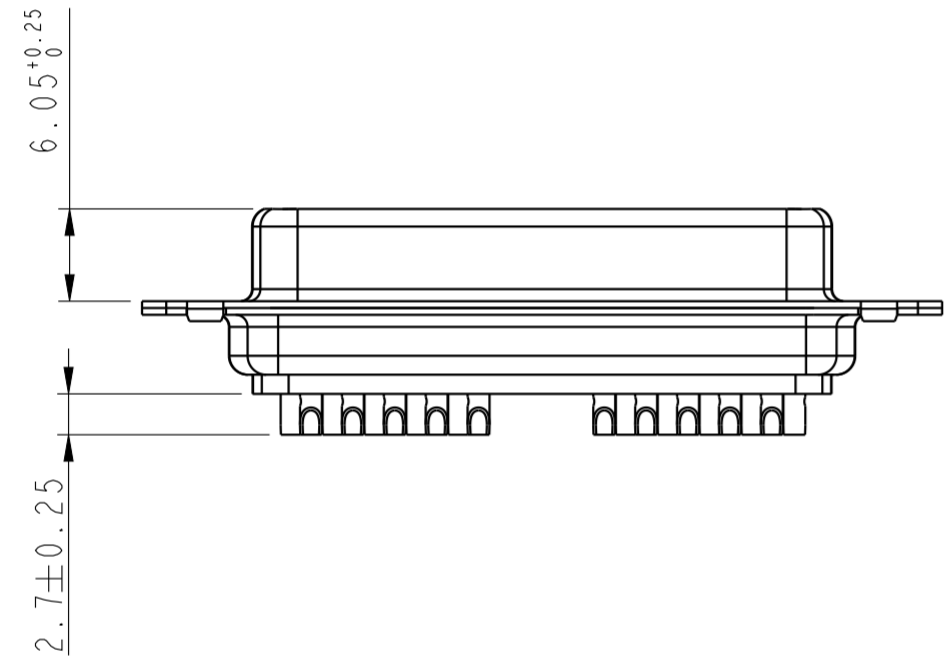
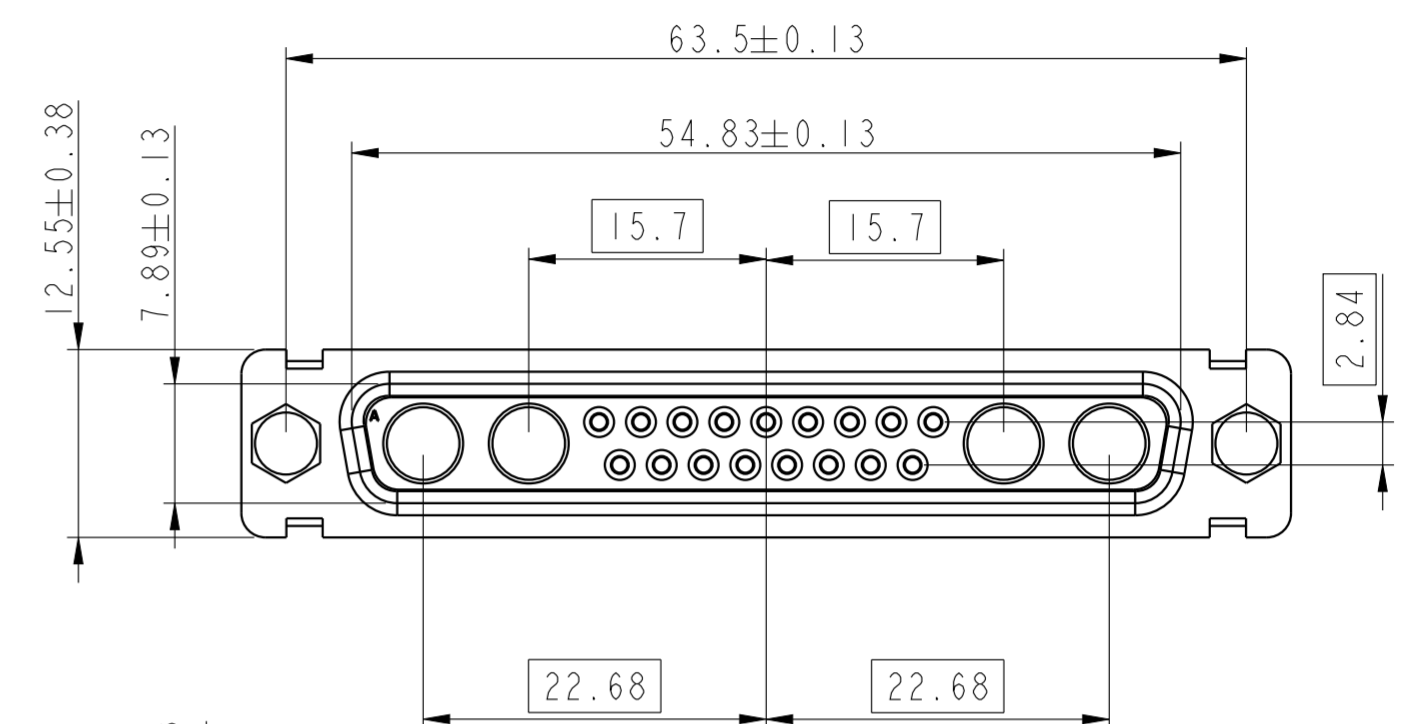
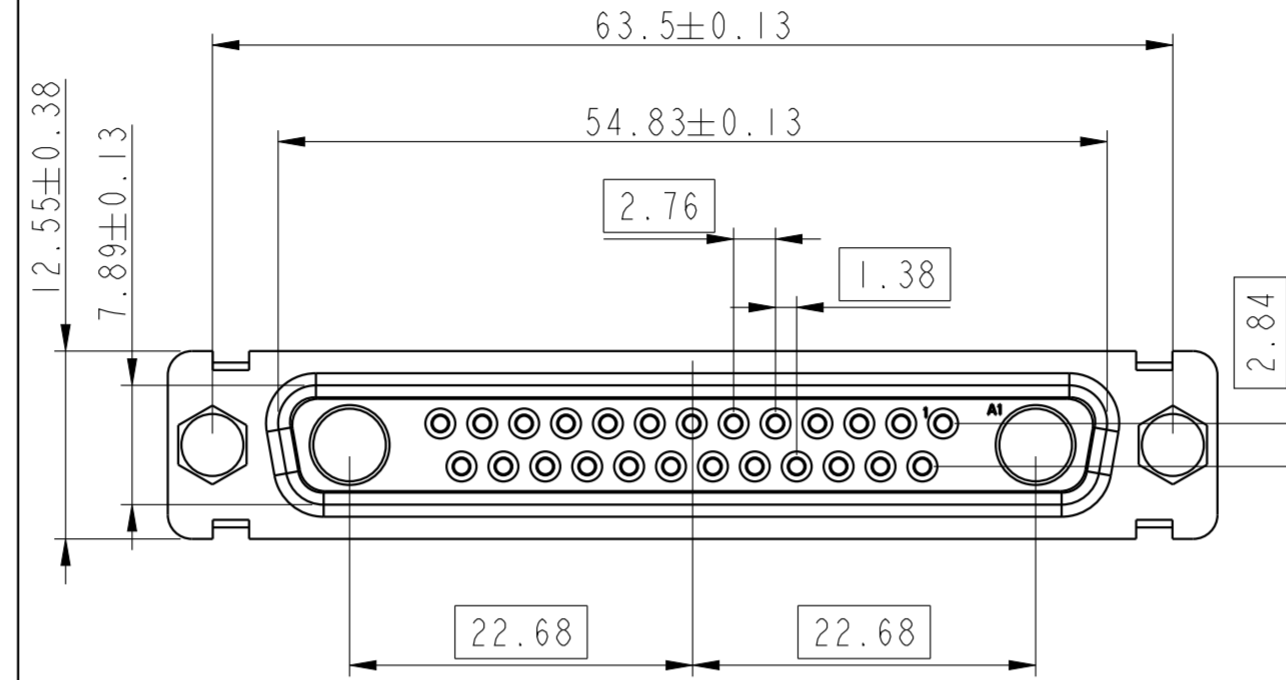
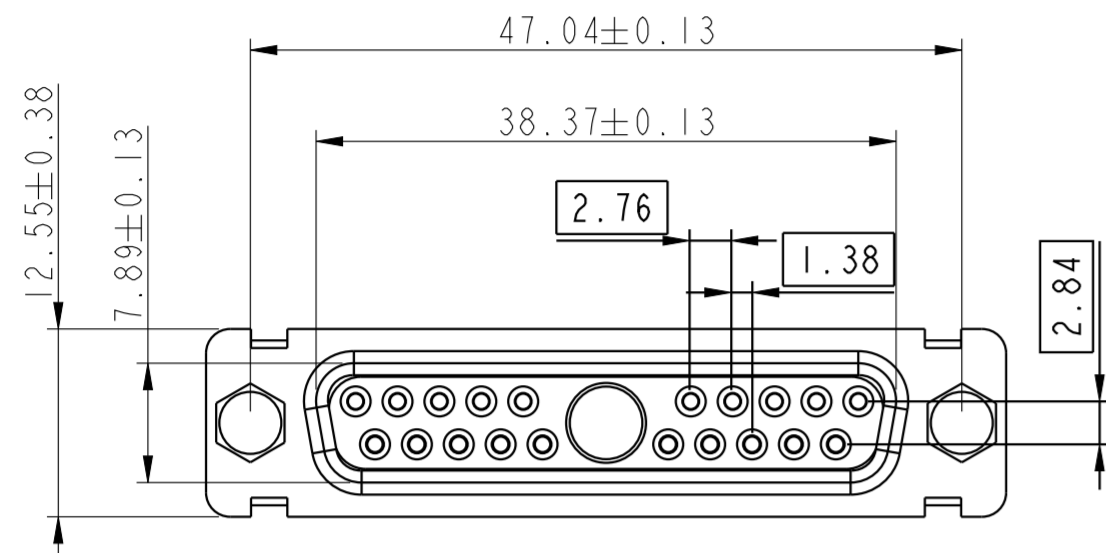
© 2020 Amphenol Corporation

spec ref	dr	M PESSON	2005-10-11	projection	MM	size	A2	scale	2:1
tolerance std	eng	GREGAR M	2005-10-11			ecn no	LS07-0273	rel level	Released
ISO 1101 ISO 406	chr	GREGAR M	15-03-2024						
surface	TOLERANCES UNLESS OTHERWISE SPECIFIED linear	0.X	±0.30	Amphenol FCI title SUB FEMALE DW MIXED POWER + SOLDER BUCKET cat. no.	product family D SUB	dwg no C01-8639-2303	rev E	Product - Customer Drw	
		0.XX	±0.10					sheet 4 of 7	
		0.XXX	±0.05						
ISO 1302	angular	0°	±2°						

21W1

27W2

21WA4



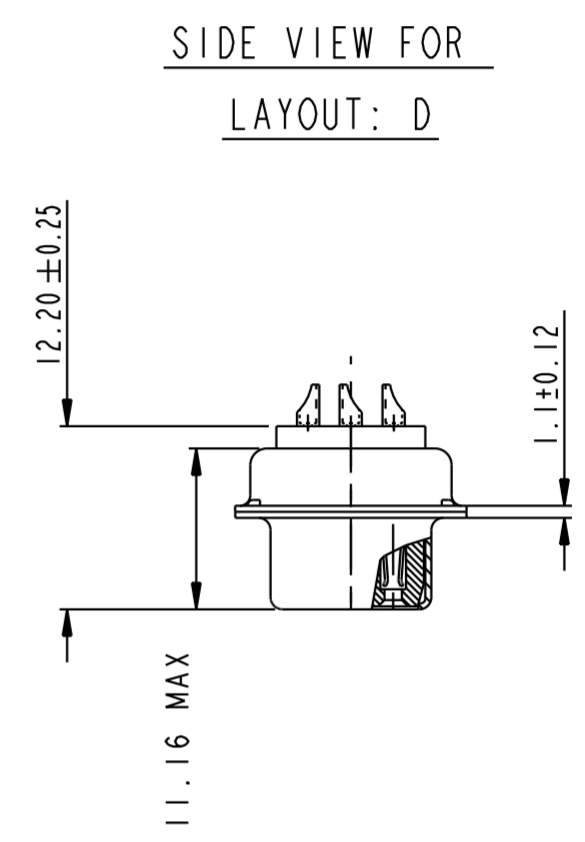
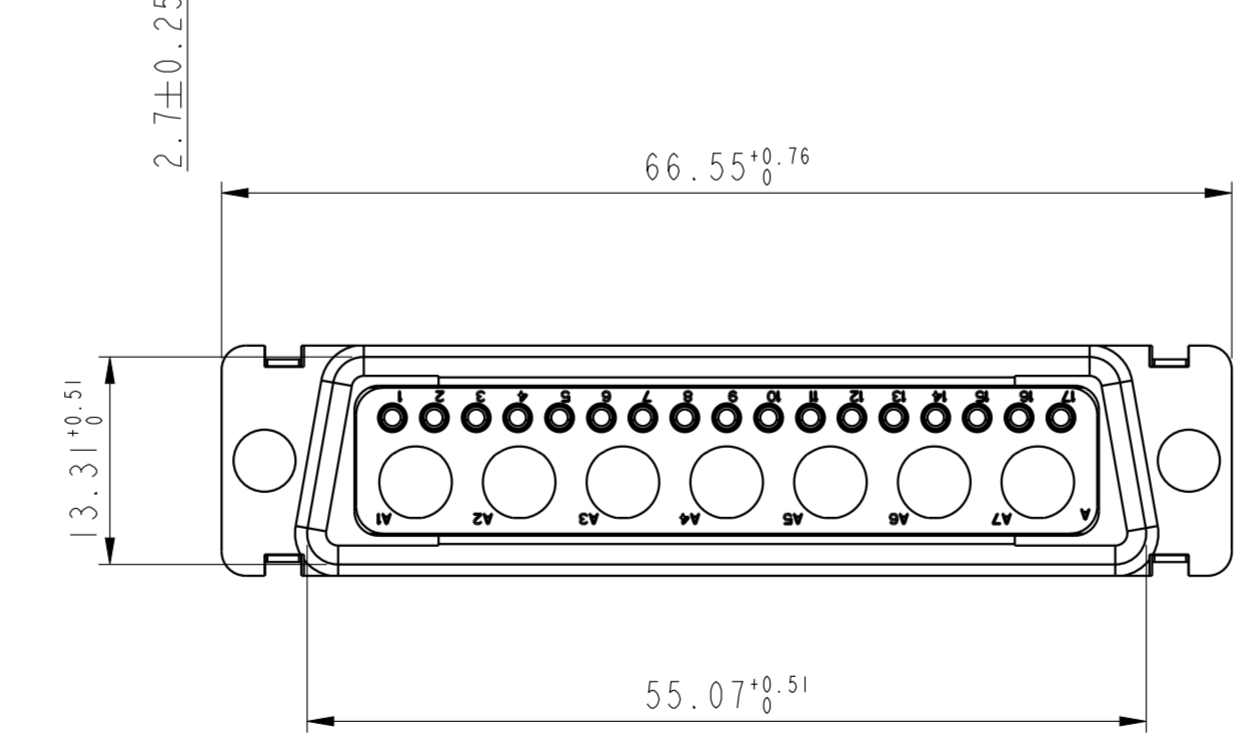
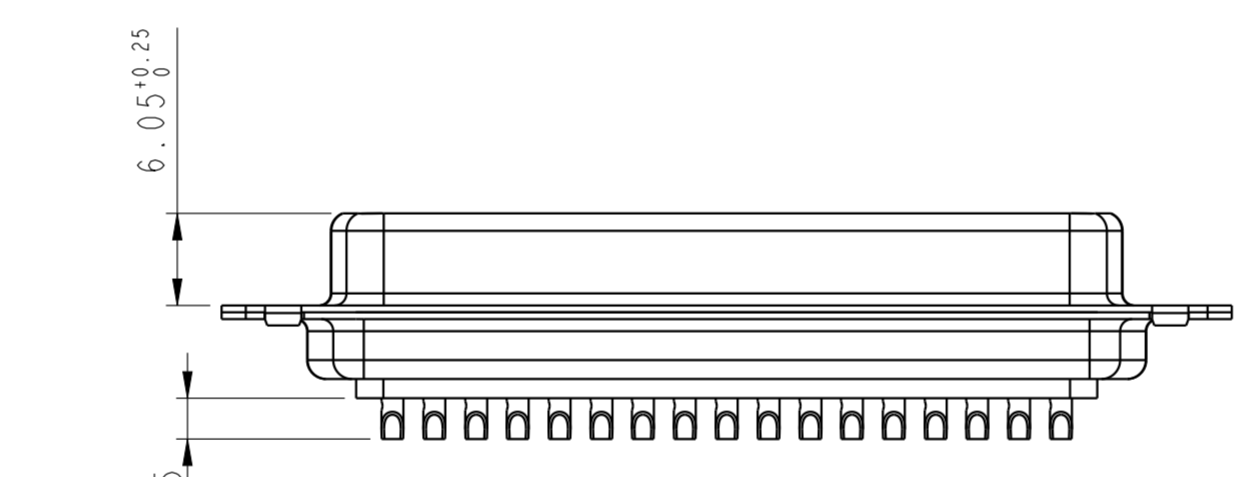
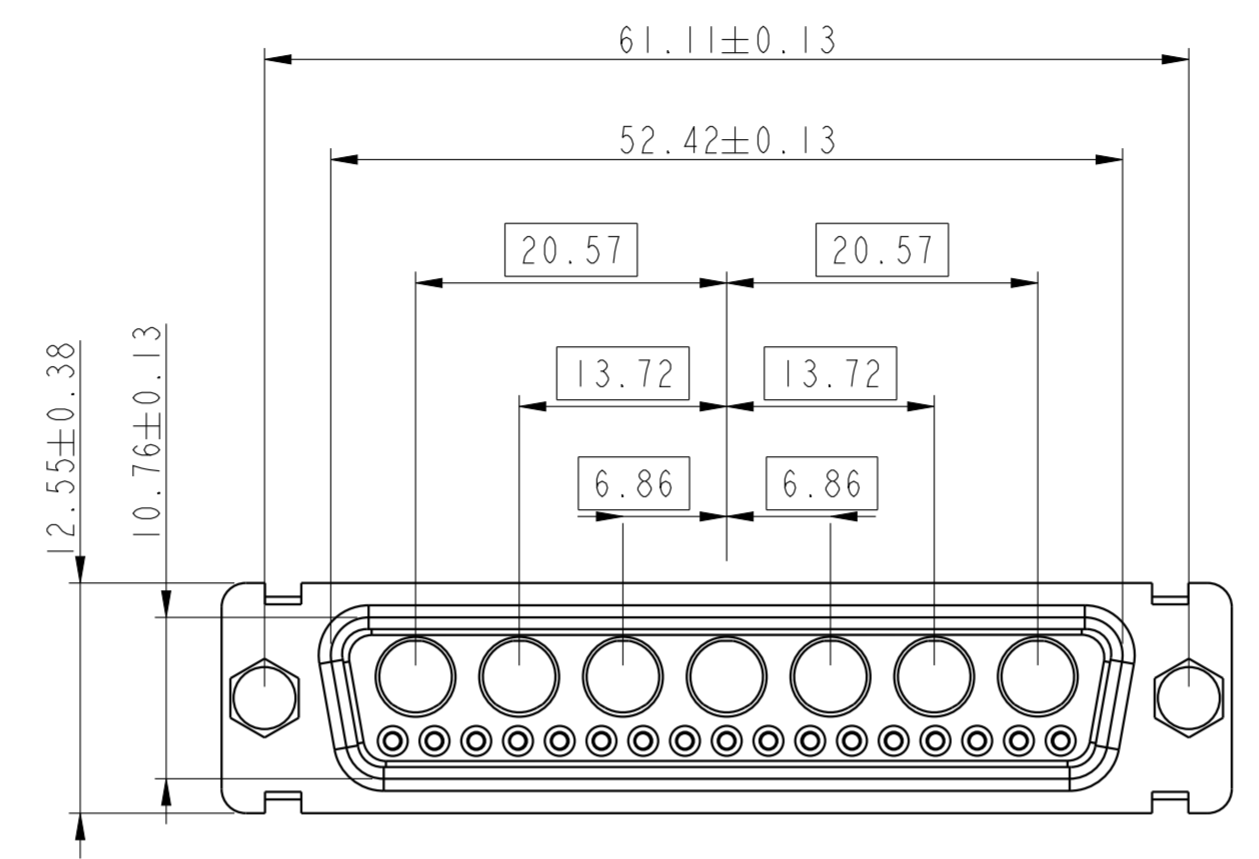
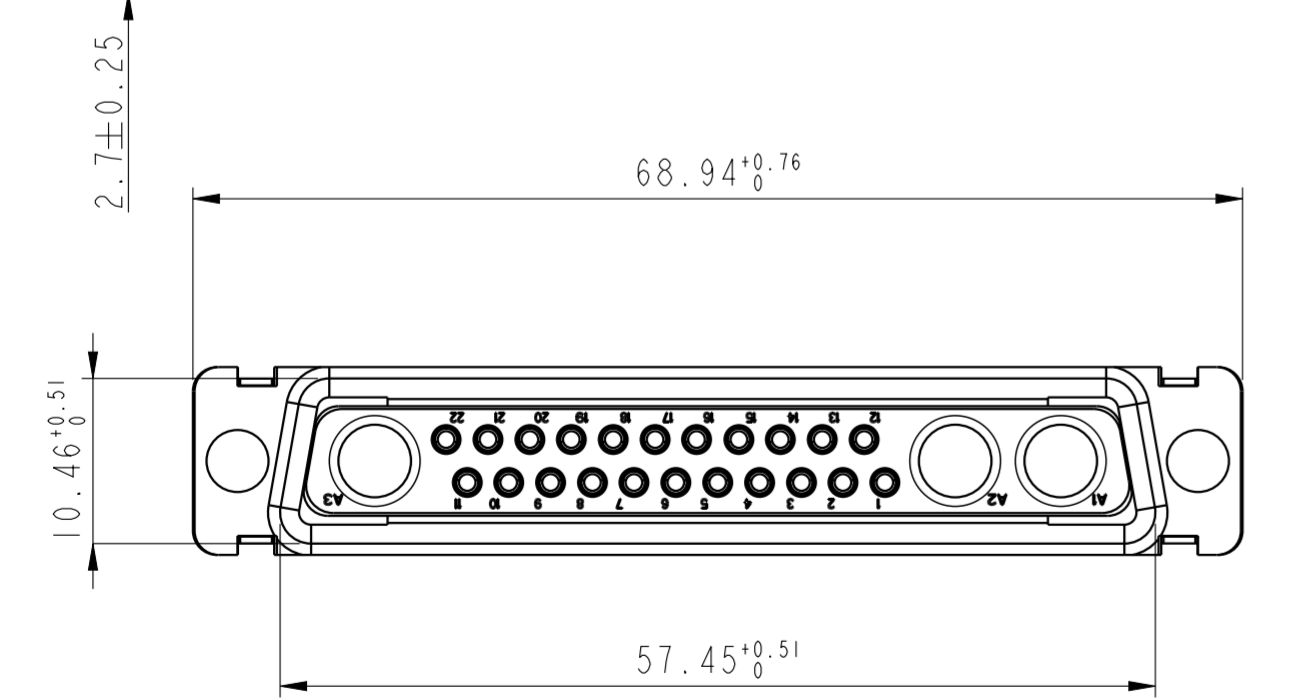
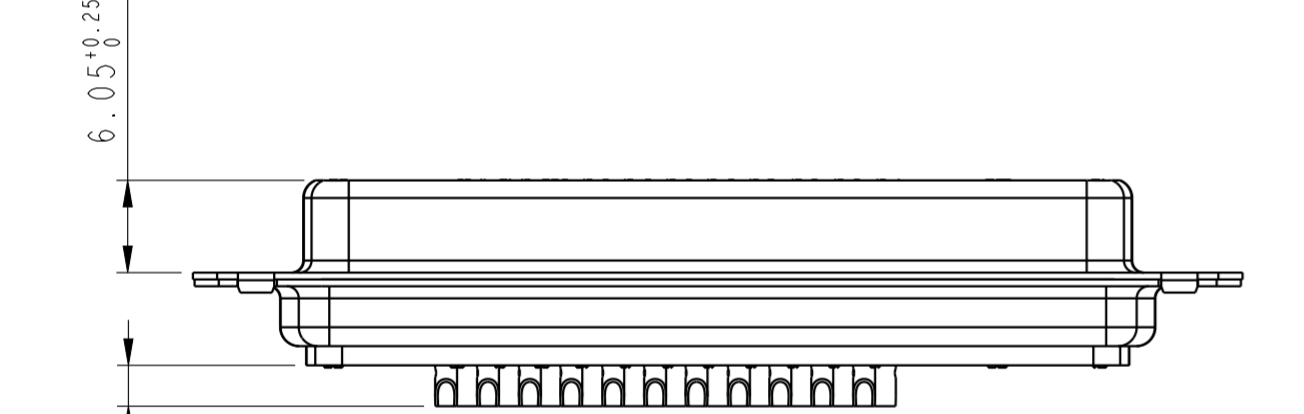
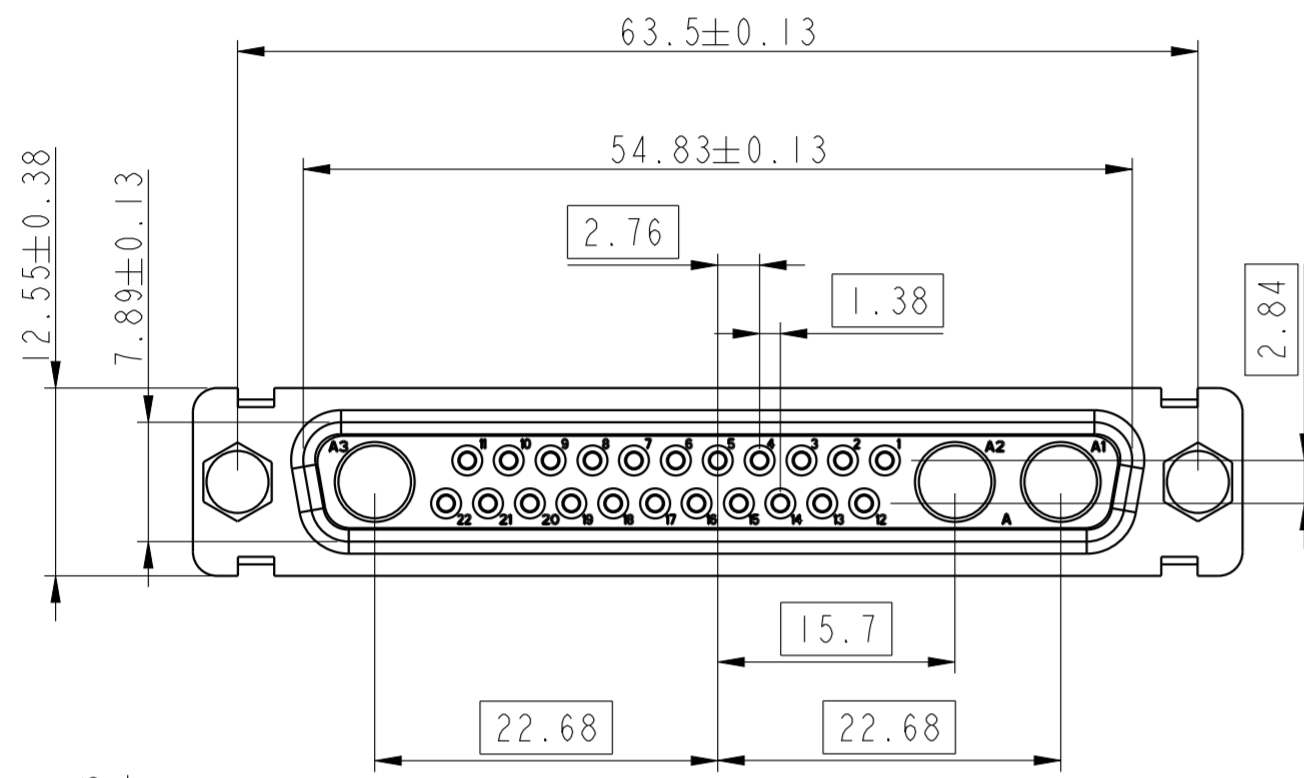
Amphenol FCI

© 2020 Amphenol Corporation

spec ref	dr	M PESSON	2005-10-11	projection	MM	size	A2	scale	2:1
tolerance std	eng	GREGAR M	2005-10-11			ecn no	LS07-0273	rel level	Released
ISO 1101	chr	GREGAR M	15-03-2024						
ISO 406	appr	ALEX BABU	15-03-2024	product family	D SUB -				
surface	linear	Amphenol FCI			title	SUB FEMALE DW		dwg no	C01-8639-2303
ISO 1302	angular	TOLERANCES UNLESS OTHERWISE SPECIFIED 0.X ±0.30 0.XX ±0.10 0.XXX ±0.05 0° ±2°			Amphenol FCI	MIXED POWER + SOLDER BUCKET		rev	E
		cat. no.		Product - Customer Drw	sheet 5 of 7				

25W3

24W7



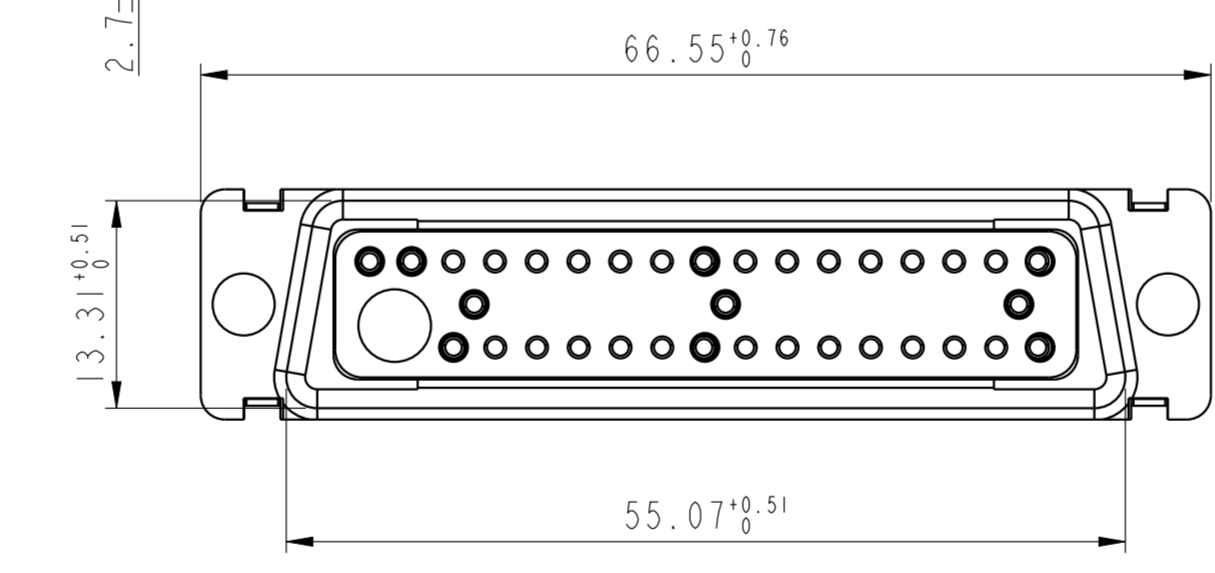
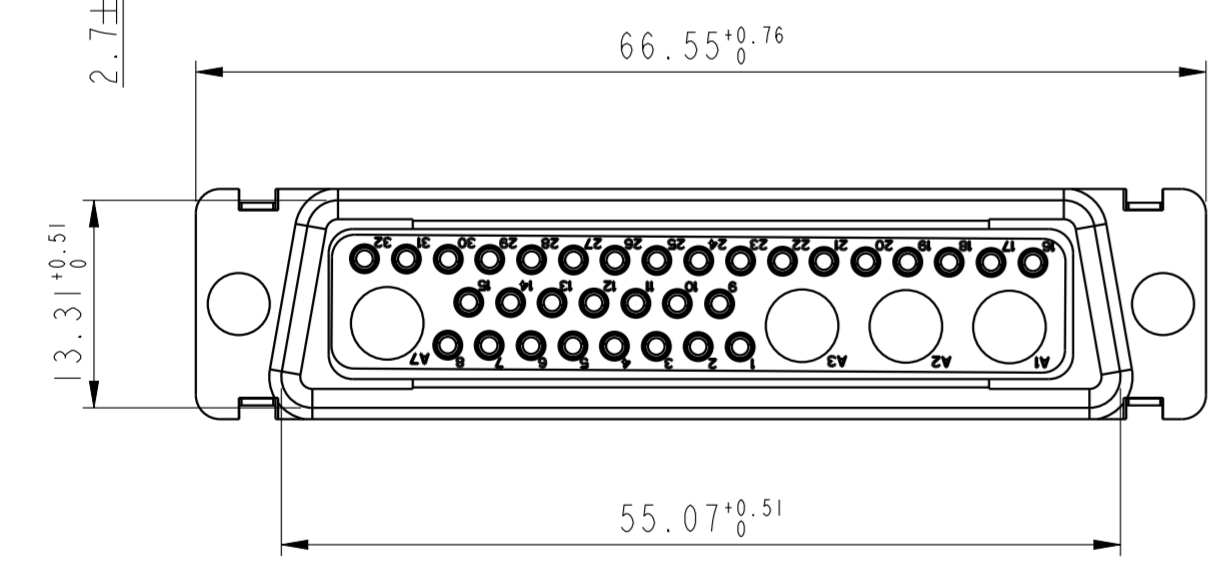
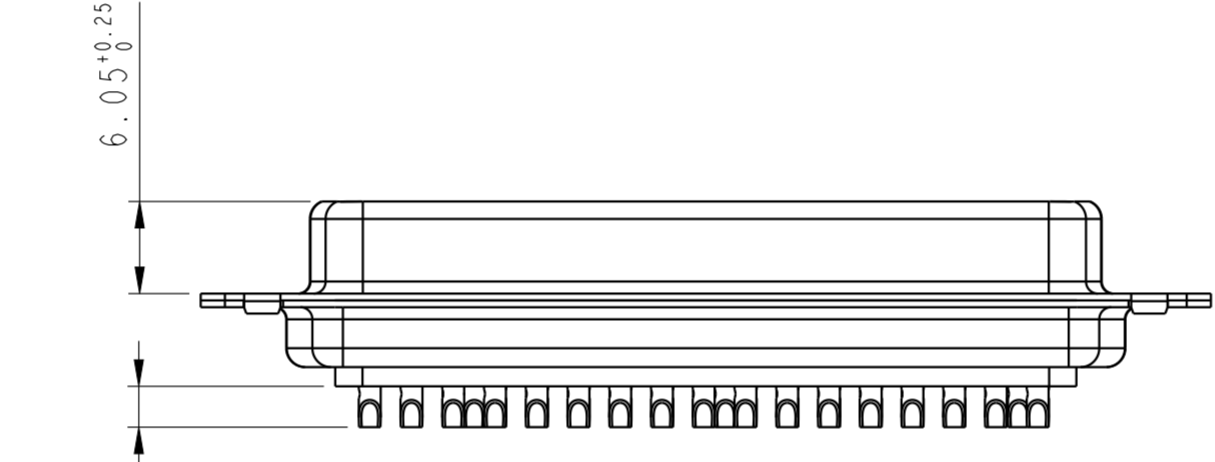
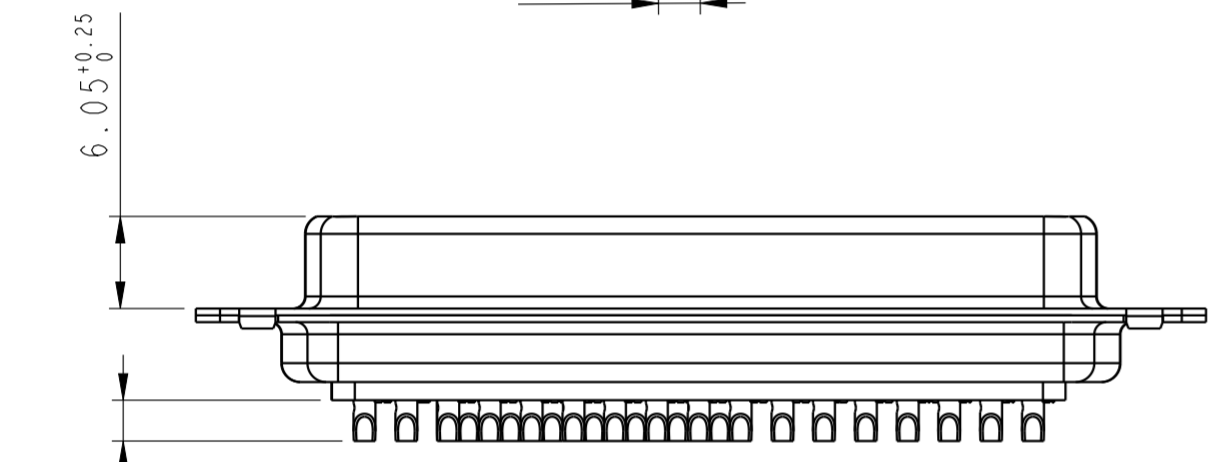
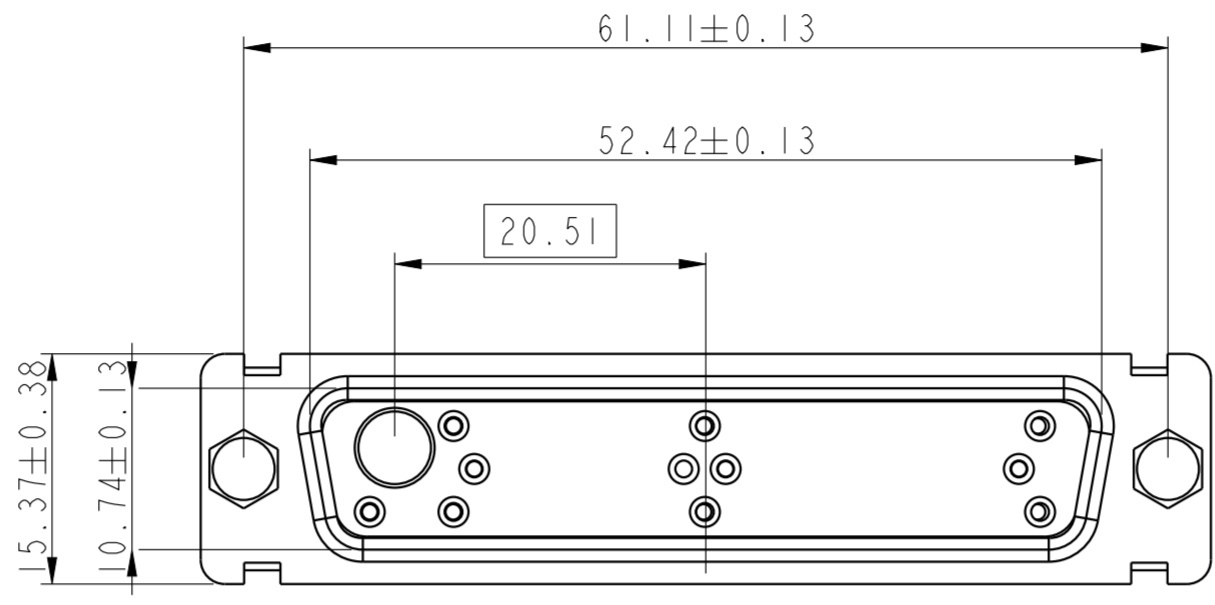
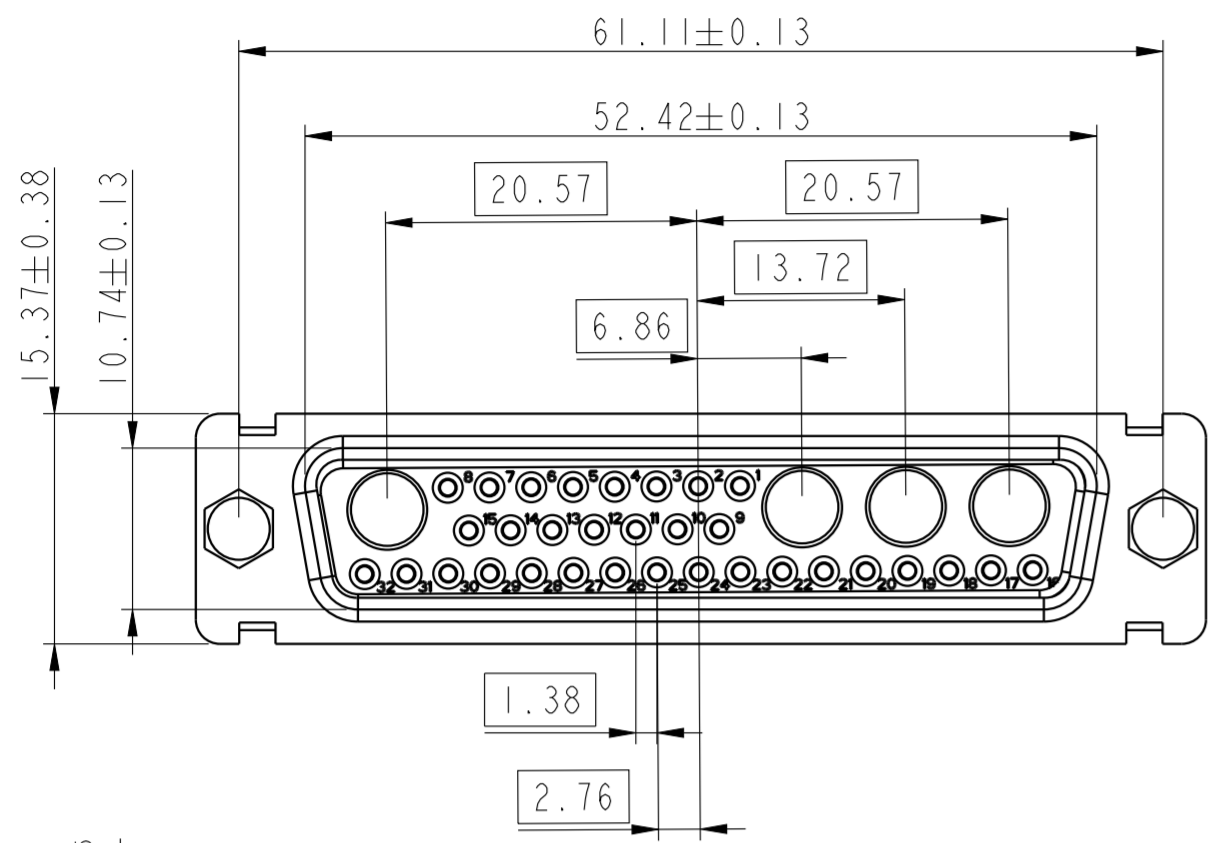
Amphenol
FCi

© 2020 Amphenol Corporation

spec ref	dr	M PESSON	2005-10-11	projection	MM	size	A2	scale	2:1
tolerance std	eng	GREGAR M	2005-10-11			ecn no	LS07-0273	rel level	Released
ISO 1101	chr	GREGAR M	15-03-2024						
ISO 406	appr	ALEX BABU	15-03-2024						
TOLERANCES UNLESS OTHERWISE SPECIFIED		product family		D SUB -		rel level		Released	
surface	linear	0.X	±0.30	Amphenol FCi		SUB FEMALE DW		dwg no	C01-8639-2303
		0.XX	±0.10	MIXED POWER + SOLDER BUCKET				rev	E
		0.XXX	±0.05	cat. no.		Product - Customer Drw		sheet 6 of 7	
ISO 1302	angular	0°	±2°						

36W4

47W1



Floating signal contacts

Amphenol
FCi

© 2020 Amphenol Corporation

spec ref	dr	M PESSON	2005-10-11	projection	MM	size	A2	scale	2:1
tolerance std	eng	GREGAR M	2005-10-11			ecn no	LS07-0273	rel level	Released
ISO 1101 ISO 406	chr	GREGAR M	15-03-2024						
surface	linear	0.X	±0.30	Amphenol FCi	SUB FEMALE DW	cat. no.	-	Product - Customer Drw	sheet 7 of 7
		0.XX	±0.10						
ISO 1302	angular	0°	±2°	MIXED POWER + SOLDER BUCKET	dwg no	C01-8639-2303	rev	E	