

FEATURES

- Thermoplastic handles
- Zinc plated steel or stainless steel studs
- Matte black finish
- Can short term withstand +170°C
- Resistant to most chemicals, UV light and water absorption (1.5% max)
- Working temperature range of -20°C to +110°C

RS PRO Black 4-Arm Clamping Knob, M10

RS Stock No.: 702-7759



RS Professionally Approved Products bring to you professional quality parts across all product categories. Our product range has been tested by engineers and provides a comparable quality to the leading brands without paying a premium price.

Product Description

Knobs are used in a wide variety of applications in our day-to-day lives and perform many functions, from being used as fixed handles to being used to tighten, loosen, adjust and push other components or pieces of equipment. They are used in various applications, from industrial and construction machinery to audio and visual equipment.

Female Knobs: Zinc-plated steel: M8 x 12 (RS [7027715](#)), M8 x 15 (RS [7027718](#)), M10 x 15 (RS [7027712](#)), M12 x 15 (RS [7027721](#)).

Stainless steel: M8 x 15 (RS [7027740](#)), M10 x 15 (RS [7027759](#)), M12 x 15 (RS [7027752](#)).

Male Knobs: Zinc-plated steel: M6 x 25mm (RS [7027692](#)), M8 x 20mm (RS [7027695](#)), M8 x 30mm (RS [7027699](#)), M8 x 25mm (RS [7027709](#)), M10 x 25mm (RS [7027702](#)), M12 x 30mm (RS [7027706](#)).

Stainless steel: M6 x 25mm (RS [7027737](#)), M8 x 20mm (RS [7027730](#)), M8 x 30mm (RS [7027734](#)), M8 x 25mm (RS [7027743](#)), M10 x 25mm (RS [7027746](#)).

Through-Thread Knobs: Zinc-plated steel: M8 x 12 (RS [7027724](#)), M10 x 15 (RS [7027728](#)).

Stainless steel: M8 x 12 (RS [7027756](#)), M10 x 15 (RS [7027765](#)).

General Specifications

Thread	M10
Knob Shape	4-Arm
Mounting Type	Threaded Hole
Body Material	High impact resistant thermoplastic
Insert Material	Stainless Steel
Colour	Black
Finish	Matte
Application	Access doors, Drawers & panels (domestic and industrial), Clamps and fixtures, Industrial machinery, Food preparation machinery, Medical furniture

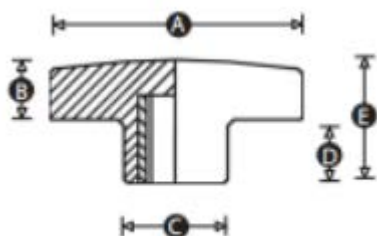
Mechanical Specifications

Thread Diameter	10mm
Thread Length	15mm
Knob Diameter	50mm
Hole Diameter	20mm
Hole Length	26mm

Approvals

Compliance/Certifications

EN 61340



Part No.	A	B	C	D	E	Thread size	Material	Insert material
7027715	38	11	16	12	23	M8	Polypropylene	Steel
7027718	50	11	20	15	26	M8	Polypropylene	Steel
7027740	50	11	20	15	26	M8	Polypropylene	Stainless steel
7027759	50	11	20	15	26	M10	Polypropylene	Stainless steel
7027712	60	14	24	15	29	M10	Polypropylene	Steel
7027721	60	14	24	15	29	M12	Polypropylene	Steel
7027752	60	14	24	15	29	M12	Polypropylene	Stainless steel