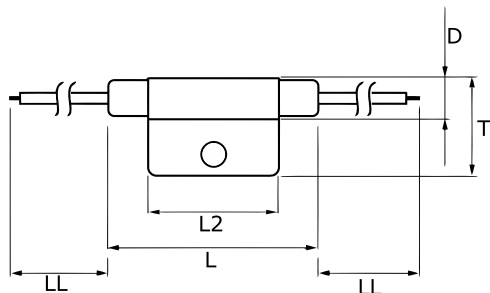


KEMET Part Number: TRS5-75BLRU
(USEG75BLR00000)

KEMET, TRS, Thermal Reed Switch, Axial, 2.5C Temperature Accuracy, High Reliability, High-Speed Response, Long Operational Life, Excellent Environmental Durability, High Temperature Accuracy, 75°C, Break



General Information

| | |
|---------------------|---|
| Series: | TRS |
| Type: | Thermal Reed Switch |
| Style: | Axial |
| Description: | Thermal Reed Switch |
| Features: | High Reliability, High-Speed Response, Long Operational Life, Excellent Environmental Durability, High Temperature Accuracy |
| Lead: | Cables |
| RoHS: | Yes |

Dimensions

| | |
|-----------|-------|
| D | 8.2mm |
| L | 50mm |
| L2 | 29mm |
| T | 20mm |
| LL | 200mm |

Specifications

| | |
|-------------------------------------|--|
| Switching Temperature: | 75C +/-2.5C |
| Temperature Range: | -20/+130C |
| Contact Type: | Break |
| Voltage DC: | 1500 VAC/1 minute or 1800 VAC/1 second |
| Voltage AC: | 140 VAC MAX (Opening/Closing) |
| Current: | 0.5 Amps AC MAX (Opening/Closing), 1 mAmps MIN (5VDC, Opening/Closing) |
| Resistance: | 150 mOhms MAX (Contact Resistance) |
| Max Opening/Closing Power: | 50 W (AC/DC) |
| Max Opening/Closing Voltage: | 140 V (AC) |
| Differential Temperature: | 10C Maximum |

Packaging Specifications

| | |
|----------------------------|----------------|
| Packaging: | Rubberband Box |
| Packaging Quantity: | 600 |
| Weight: | 8.5 g |