



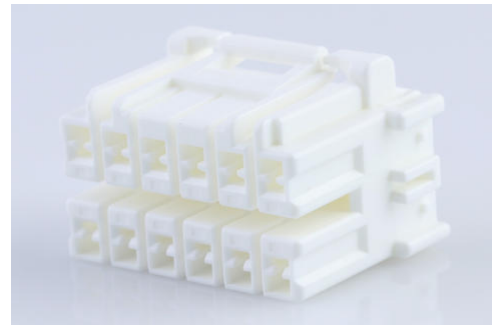
Part Number : [5056051200](#)

Product Description : CP-3.3 Receptacle Housing, 3.30mm Pitch, Dual Row, Polarized, Positive Inertia Lock, 12 Circuits, Natural

Series Number : 505605

Status : Active

Product Category : Connector Housings



Documents & Resources

Drawings

[5056051200_sd.pdf](#)

3D Models and Design Files

[STEP AP242](#)

[SOLIDWORKS](#)

[Creo](#)

Specifications

[5056050000-A01.pdf](#)

[5056050000-A00.pdf](#)

[5056059200-200.pdf](#)

[5056050000-000.pdf](#)

Product Environment Compliance

Compliance

GADSL/IMDS	Not Relevant
China RoHS	per SJ/T 11365-2006 
EU ELV	Not Relevant
Low-Halogen Status	Not Low-Halogen per IEC 61249-2-21
REACH SVHC	Not Contained per D(2025)4165-DC (25 June 2025)
EU RoHS	Compliant per EU 2015/863

Compliance Statements

- EU RoHS
- REACH SVHC
- Low-Halogen

Industry Documents

- IPC 1752A Class C
- IPC 1752A Class D
- Molex Product Compliance Declaration
- IEC-62474
- chemSHERPA (xml)

Substances of Interest

- PFAS

EU RoHS Certificate of Compliance

Additional Product Compliance Information

Part Details

General

Status	Active
Category	Connector Housings
Series	505605
Description	CP-3.3 Receptacle Housing, 3.30mm Pitch, Dual Row, Polarized, Positive Inertia Lock, 12 Circuits, Natural
Application	Signal, Wire-to-Wire
Product Name	CP-3.3
UPC	889056802802

Agency

UL	E29179
----	--------

Physical

Circuits (maximum)	12
Color - Resin	Natural
Flammability	94V-0
Gender	Receptacle
Glow-Wire Capable	No

Keying to Mating Part	Yes
Lock to Mating Part	Yes
Material - Resin	PBT
Net Weight	3347.000/mg
Number of Rows	2
Packaging Type	Bag
Panel Mount	No
Pitch - Mating Interface	3.30mm
Pitch - Termination Interface	3.30mm
Polarized to Mating Part	Yes
Stackable	No
Temperature Range - Operating	-40° to +105°C

Mates With / Use With

Mates with Part(s)

Description	Part Number
CP-3.3 Plug Housing, 3.30mm Pitch, Dual Row, Polarized, Positive Inertia Lock, 12 Circuits, Natural	<u>5056061200</u>

Use with Part(s)

Description	Part Number
CP-3.3 Terminal Position Assurance (TPA) Retainers	<u>504695</u>
CP-2.5 Mini and CP-3.3 Female Crimp Terminals	<u>50397</u>
CP-3.3 Wire-to-Wire Female Crimp Terminals	<u>505607</u>