

FEATURES

- Strong pressure die-cast LM24 aluminium body. Textured black, full polyester powder finish as standard
- White option finish
- Hinged clear prismatic or satin, flame-retardant polycarbonate cover
- Tamper-resistant cover screws as standard
- Bezel trim for semi-recessed mounting
- Emergency version uses 1.5W high power LED
- 60,000 hour LED life expectancy
- Fitted with 4000K LEDs

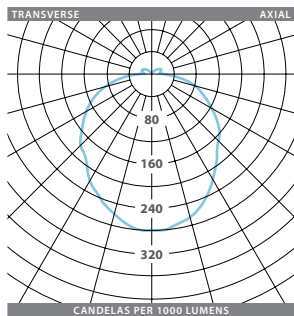
IP65 CE

LED CHARACTERISTICS

Ra	°K	L70/B10	P/U	%	R/Rx	PF	LL/W
80+	4000	60K	P	85	R	>0.95	77.9

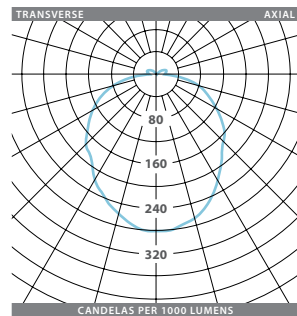
PHOTOMETRIC GUIDE

CLEAR



Luminaire Lumen Output:
16W - 1480 lm

SATIN



Luminaire Lumen Output:
16W - 1400 lm



RANGE

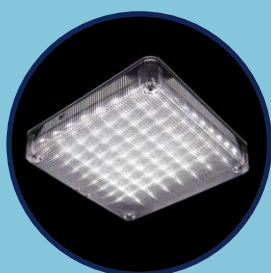
LED	CAT. No.	APPROX. kg
Clear Cover		
16W	PS 14913L	2.8
Satin Cover		
16W	PS 14914L	2.8
Retro-fit Gear Tray		
16W	PS 14917L	0.8

White Option: Add suffix **W** e.g. **PS 14913W**.

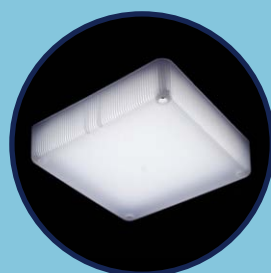
EMERGENCY VERSION - Prefix catalogue number with 'EPS' e.g. **EPS 14913L**.
 AUTOTEST VERSION - Prefix catalogue number with 'TPS' e.g. **TPS 14913L**.
 SCANLIGHT AT VERSION - Prefix catalogue number with 'DPS' e.g. **DPS 14913L**.
 Emergency and AutoTest versions add 0.3kg to weights listed.

ACCESSORIES

DESCRIPTION	CAT. No.
Spare key for tamper-resistant screw	KY 6759
Bezel for semi-recessed mounting (black finish)	PS 11876B
Bezel for semi-recessed mounting (white finish)	PS 11876W

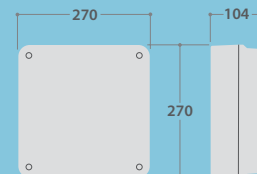


Clear Cover



Satin Cover

DIMENSIONS



Fixing points: 4 x 7mm dia. holes on 205mm centres and 1 central BESA box fixing