



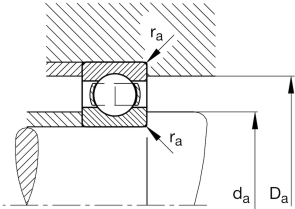
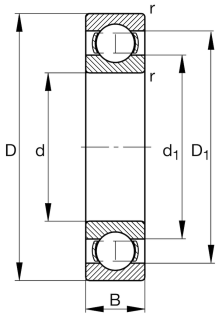
FAG

16038-C3 [🔗](#)

Deep groove ball bearing

Deep groove ball bearing 160, single row,
steel sheet metal cage

Technical information



Your current product variant

Sealing	Without	Not sealed
Cage	JN	Steel sheet metal
Tolerance class	PN	Normal (PN)
Dimensional / heat stabilization	S1	Rings dimensional stabilized up to 200°
Lubricant	Without	Bearing not greased
Radial internal clearance	C3 (Group 3)	Internal clearance larger than CN
Bore type	Z	Cylindrical

Main Dimensions & Performance Data

d	190 mm	Bore diameter
D	290 mm	Outside diameter
B	31 mm	Width
C _r	158,000 N	Basic dynamic load rating, radial
C _{0r}	168,000 N	Basic static load rating, radial
C _{ur}	6,400 N	Fatigue load limit, radial
n _G	3,100 1/min	Limiting speed
n _{gr}	2,650 1/min	Reference speed
≈m	7.04 kg	Weight



Mounting dimensions

d a min	198.8 mm	Minimum diameter shaft shoulder
D a max	281.2 mm	Maximum diameter of housing shoulder
r a max	2 mm	Maximum fillet radius

Dimensions

r min	2 mm	Minimum chamfer dimension
D 1	255.15 mm	Shoulder diameter outer ring
d 1	225.74 mm	Shoulder diameter inner ring

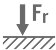





Temperature range

T min	-30 °C	Operating temperature min.
T max	200 °C	Operating temperature max.

Calculation factors

f 0	16.5	Calculation factor
-----	------	--------------------

Characteristics

	Radial load
	Axial load in one direction
	Axial load in two directions
	Grease Lubrication
	Oil Lubrication
	Not sealed