



ENGLISH

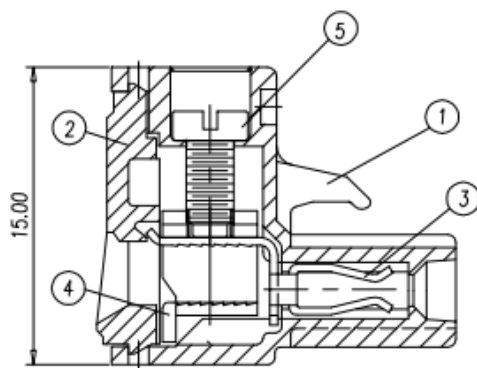
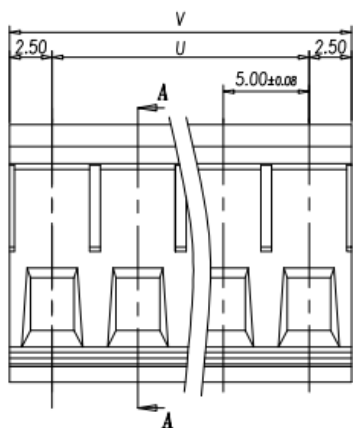
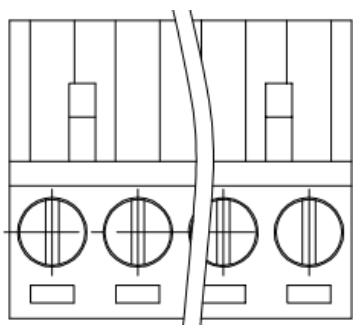
## Datasheet

### New 5.0mm Plug 15A 2 way

RS Stock 874-4698



#### Dimensions: (mm)





ENGLISH

## Specifications

- Rating: 300V 15 A (IEC 250V 12A)
- Insulation withstands voltage: AC1500V / Min
- Insulation Resistance: 500M  $\Omega$  or more at DC500V
- Using Temperature Range: -40 °C - +105 °C
- Screw Torque Valve: 5kg – cm
- Suitable electric wire: 28~12 (IEC 4.0~5.6mm) AWG

## Materials

- Screw: M2.5 Zinc Plated
- Wire Cage: Zinc Plated
- Clamp: Solder Plated
- Cover: Green (PA66VO)
- Housing: Green(PA66VO)