

Description

Magnecraft™ General Purpose Relays

750 Series

DPDT and 3DPT, 12 A



UL listed when used with proper Magnecraft™ sockets



750 Clear Cover



750 Full-Feature Cover

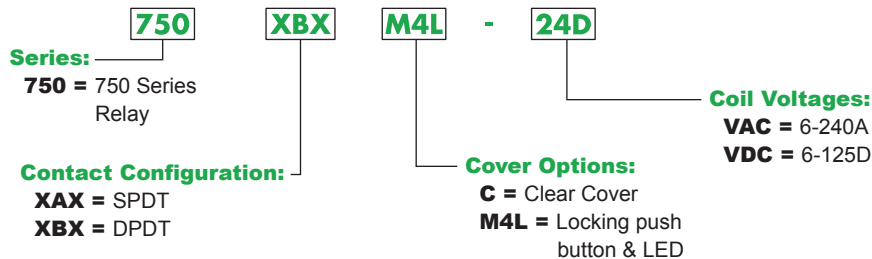
Description

The 750 series octal base, plug-in relays offer clear or full-feature covers with multiple mounting options and accessories.

Feature	Benefit
Octal style mounting	Robust & historically-proven mounting platform that provides excellent structural support
12 A max. switching current	Ideal for automation panels & controls
Clear or full-feature cover options	Full-feature covers include LED indicator & locking test button
DPDT & 3PDT contact configurations	Simultaneously control separate circuits
Socket mount option	Simplifies installation & maintenance while also allowing the use of protection modules, hold-down clips & other accessories
Gold-flashed contacts	Reduces contact oxidation & increases shelf life
Mechanical flag indicator	Standard feature displays relay status during testing or operation

Contact Configuration	Contact Rating	Nominal Voltage	Coil Resistance (Ω)	Standard Part Number: Clear Cover	Standard Part Number: Full-Feature
DPDT	12 A	24 Vac 50/60 Hz	72	750XBXC-24A	750XBXM4L-24A
		120 Vac 50/60 Hz	1700	750XBXC-120A	750XBXM4L-120A
		220/240 Vac 50/60 Hz	7200	750XBXC-220/240A	750XBXM4L-220/240A
		12 Vdc	120	750XBXC-12D	750XBXM4L-12D
		24 Vdc	470	750XBXC-24D	750XBXM4L-24D
		110/125 Vdc	10000	750XBXC-110D	750XBXM4L-110D
3PDT	12 A	24 Vac 50/60 Hz	72	750XCXC-24A	750XCXM4L-24A
		120 Vac 50/60 Hz	1700	750XCXC-120A	750XCXM4L-120A
		12 Vdc	120	750XCXC-12D	750XCXM4L-12D
		24 Vdc	470	750XCXC-24D	750XCXM4L-24D
		110/125 Vdc	10000	750XCXC-110D	750XCXM4L-110D

Part Number Explanation



*Please note that LED-only versions are also available.
Please contact Customer Service for more information (847-441-2540).

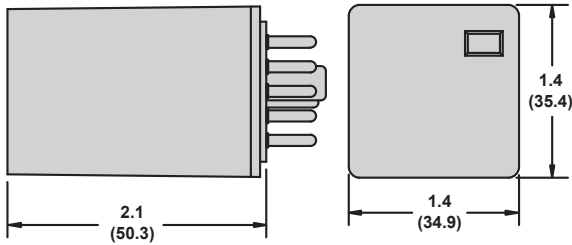
Specifications (UL 508)

Part Number	750XBX	750XCX
Contact Characteristics		
Terminal Style	Octal	Octal
Contact Configuration	DPDT	3PDT
Maximum Current	12 A	12 A
Contact Materials	Silver Alloy	Silver Alloy
Maximum Switching Voltage	300 V	300 V
Rated Switching Current at Voltage	Resistive: 12 A at 120 Vac 50/60 Hz; 16 A at 277 Vac 50/60 Hz; 16 A at 28 Vdc Motor: 1/2 at 240 Vac; 1/3 at 120 Vac Pilot Duty: B300	Resistive: 12 A at 120 Vac 50/60 Hz; 16 A at 277 Vac 50/60 Hz; 16 A at 28 Vdc Motor: 1/2 at 240 Vac; 1/3 at 120 Vac Pilot Duty: B300
Minimum Switching Requirement	100 mA at 5 Vdc (0.5 W)	100 mA at 5 Vdc (0.5 W)
Coil Characteristics		
Maximum Operating Voltage	110% (AC / DC)	110% (AC / DC)
Maximum Pickup Voltage	85% (AC); 80% (DC)	85% (AC); 80% (DC)
Drop-out Voltage Threshold	15% (AC); 10% (DC)	15% (AC); 10% (DC)
Average Consumption	3 VA (AC); 1.4 W (DC)	3 VA (AC); 1.4 W (DC)
General Characteristics		
Electrical Life at Rated Load	100,000 operations	100,000 operations
Mechanical Life	5,000,000 operations	5,000,000 operations
Operating Time (Response Time)	20 ms	20 ms
Dielectric Strength - Between Coil and Contact (AC)	2500 V(rms)	2500 V(rms)
Dielectric Strength - Between Poles (AC)	2500 V(rms)	2500 V(rms)
Ambient Air Temperature around the Device - Storage	-40 – +85 °C (-40 – +221°F)	-40 – +85 °C (-40 – +185 °F)
Ambient Air Temperature around the Device - Operation	-40 – +55 °C (-40 – +143°F)	-40 – +55 °C (-40 – +131 °F)
Vibration Resistance - Operational	3 g-n at 10-55 Hz	3 g-n at 10-55 Hz
Shock Resistance	10 g-n	10 g-n
Degree of Protection	IP 40	IP 40
Weight	89 g (3.14 oz)	89 g (3.14 oz)
Agency Approvals	UL with socket, UR (E43641), CE, CSA (LR40787), RoHS	UL with socket, UR (E43641), CE, CSA (LR40787), RoHS

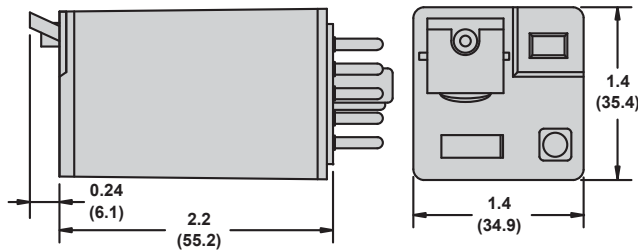
Note: Actual product performance may vary depending on application and environmental conditions.

Dimensions — inches (millimeters)

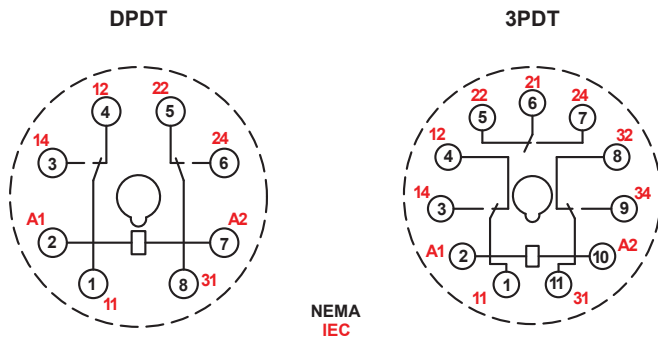
Clear Cover Dimensions

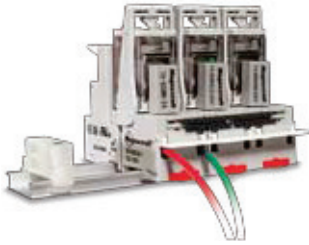


Full-Feature Cover Dimensions



Wiring Diagrams

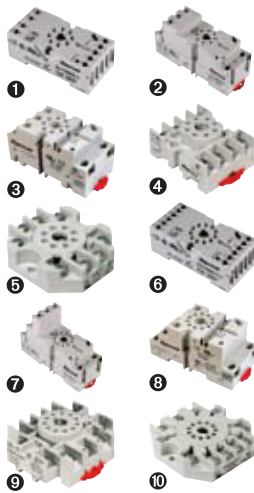




Description

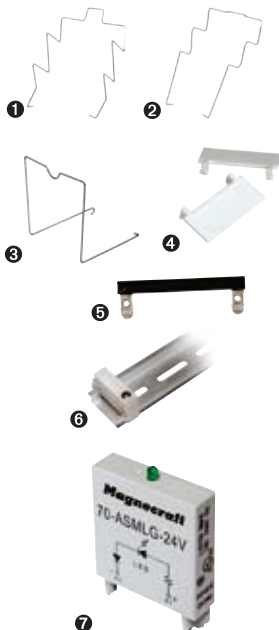
Optional sockets offer customizable, finger-safe™ solutions including protection modules, hold-down clips, and ID tags. Sockets are DIN rail and panel mount compatible.

Relay Accessories



Description	Function	For Use With Relays	Pkg. Min.	Standard Part Number
Socket 1	DIN/Panel mount, module compatible	750XBX	10	70-750E8-1
Socket 2	DIN/Panel mount with elevator terminals, module compatible	750XBX	10	70-750EL8-1
Socket 3	DIN/Panel mount, module compatible	750XBX	10	70-750DL8-1
Socket 4	DIN/Panel mount with screw terminals & clamping plates	750XBX	10	70-464-1
Socket 5	Panel mount with screw terminals & clamping plates	750XBX	10	70-169-1
Socket 6	DIN/Panel mount with elevator terminals, module compatible	750XCX	10	70-750E11-1
Socket 7	DIN/Panel mount with elevator terminals	750XCX	10	70-750EL11-1
Socket 8	DIN/Panel mount, module compatible	750XCX	10	70-750DL11-1
Socket 9	DIN/Panel mount with screw terminals & clamping plates	750XCX	10	70-465-1
Socket 10	Panel mount with screw terminals & clamping plates	750XCX	10	70-170-1

Socket Accessories



Description	Function	For Use With Sockets	Coil Voltage	Pkg. Min.	Standard Part Number
Metal Spring Clip 1	Secures relay in socket	70-750EL8-1, 70-750E8-1, 70-750E11-1, 70-464-1	–	10	16-1351
Metal Spring Clip 2	Secures relay in socket	70-750E8-1, 70-750DL8-1, 70-750E11-1, 70-464-1	–	10	16-1344
Metal Spring Clip 3	Secures relay in socket	70-750DL8-1	–	10	16-1332
Plastic I.D. Tag 4	Write-on plastic labels	70-750E8-1, 70-750EL8-1, 70-750DL8-1, 70-750E11-1, 70-750EL11, 70-750DL11-1	–	10	16-750/788FT-1
Insulated Coil Bus Jumper System 5	Wireless socket connection	70-750E8-1, 70-750EL8-1, 70-750DL8-1, 70-750E11-1, 70-464-1, 70-465-1	–	10	16-750/788CBJ-1
Extruded Aluminum DIN Rail, 39.37" (1000 mm) 6	Quick installation and removal of sockets	–	–	10	16-700DIN
DIN Rail End Clip 6	Plastic end clip with locking screw	–	–	10	16-DCLIP-1
Large Socket Module	MOV Suppressor (Protects external drive circuitry from damaging electrical spikes)	70-750E8-1, 70-750EL8-1, 70-750DL8-1, 70-750E11-1, 70-750EL11-1, 70-750DL11-1	24 Vac/Vdc	10	70-ASMM-24
Large Socket Module	Protection Diode (Protects external drive circuitry from inductive voltages)	70-750E8-1, 70-750EL8-1, 70-750DL8-1, 70-750E11-1, 70-750EL11-1, 70-750DL11-1	120 Vac/Vdc	10	70-ASMD-250
Large Socket Module 7	LED Indicator (Provides coil status at a glance)	70-750E8-1, 70-750EL8-1, 70-750DL8-1, 70-750E11-1, 70-750EL11-1, 70-750DL11-1	110/240 Vac/Vdc	10	70-ASMLG-110/240
Large Socket Module	RC Suppressor (Snubs back EMF of relay coil)	70-750E8-1, 70-750EL8-1, 70-750DL8-1, 70-750E11-1, 70-750EL11-1, 70-750DL11-1	110/240 Vac/Vdc	10	70-ASMR-110/240

Note: Use of LED or RC socket module may increase coil power draw by up to 10%.