

5205736-7 ✓ ACTIVE

AMPLIMITE | AMPLIMITE HD-20

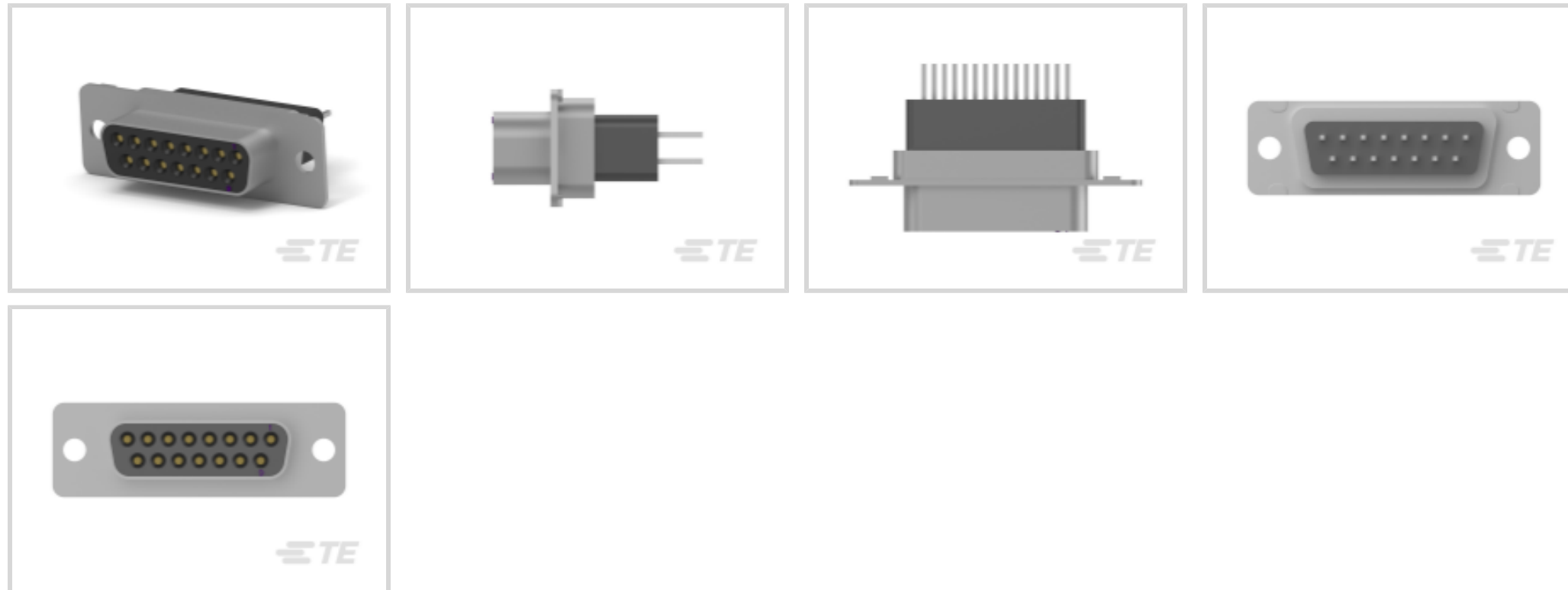
TE Internal #: 5205736-7

15 Position D-Shaped Connector, Receptacle, Board-to-Board,
Board Mount, Shell Size 3, 2.74 mm [.108 in] Centerline, AMPLIMITE
HD-20

[View on TE.com >](#)



Connectors > D-Shaped Connectors > D-Sub Receptacle Assembly: Vertical, Shell Size 3, 2.77mm



Number of Positions: **15**

Connector & Housing Type: **Receptacle**

Connector System: **Board-to-Board**

Connector Mounting Type: **Board Mount**

Connector Shell Size: **3**

[All D-Sub Receptacle Assembly: Vertical, Shell Size 3, 2.77mm \(35\)](#)

Features

Product Type Features

Shell Material Configuration	Full Metal Shell
Connector & Housing Type	Receptacle
Connector System	Board-to-Board
Connector Shell Size	3
Connector & Contact Terminates To	Printed Circuit Board

Configuration Features

Number of Positions	15
Number of Rows	2
PCB Mount Orientation	Vertical

Body Features

Insert Material	Polyamide, GV
Shell Plating Material	Zinc



Primary Product Color	Black
-----------------------	-------

Connector Profile	Standard
-------------------	----------

Contact Features

	30 μ m
--	------------

Contact Underplating Material	Palladium Nickel
-------------------------------	------------------

Contact Mating Area Plating Material	Gold (Au)
--------------------------------------	-----------

Contact Base Material	Phosphor Bronze
-----------------------	-----------------

PCB Contact Termination Area Plating Material	Tin
---	-----

Contact Shape & Form	Square
----------------------	--------

Contact Current Rating (Max)	6 A
------------------------------	-----

Contact Options	Installed
-----------------	-----------

Termination Features

Termination Method to PCB	Through Hole - Solder
---------------------------	-----------------------

Termination Post & Tail Length	4.78 mm [.188 in]
--------------------------------	-------------------

Square Termination Post & Tail Dimension	.63 mm [.025 in]
--	------------------

Mechanical Attachment

	.12 in
--	--------

Connector Mounting Type	Board Mount
-------------------------	-------------

PCB Mount Retention	Without
---------------------	---------

Mating Retention	Without
------------------	---------

Housing Features

Housing Material	Nylon GF
------------------	----------

Shell Material	Steel
----------------	-------

Centerline (Pitch)	2.74 mm [.108 in]
--------------------	-------------------

Dimensions

PCB Thickness (Recommended)	1.57 mm, 2.36 mm [.062 in] [.093 in]
-----------------------------	--------------------------------------

Row-to-Row Spacing	2.84 mm [.112 in]
--------------------	-------------------

Usage Conditions

Operating Temperature Range	-55 – 105 °C [-67 – 221 °F]
-----------------------------	-----------------------------

Operation/Application

Circuit Application	Signal
---------------------	--------

Industry Standards



UL Flammability Rating	UL 94V-0
------------------------	----------

Packaging Features

Packaging Quantity	13
Packaging Method	Tube

Product Compliance

[For compliance documentation, visit the product page on TE.com>](#)

EU RoHS Directive 2011/65/EU	Compliant
EU ELV Directive 2000/53/EC	Compliant
China RoHS 2 Directive MIIT Order No 32, 2016	No Restricted Materials Above Threshold
EU REACH Regulation (EC) No. 1907/2006	Current ECHA Candidate List: JUNE 2025 (250) Candidate List Declared Against: JUNE 2025 (250) Does not contain REACH SVHC
Halogen Content	Not Low Halogen - contains Br or Cl > 900 ppm.
Solder Process Capability	Wave solder capable to 265°C

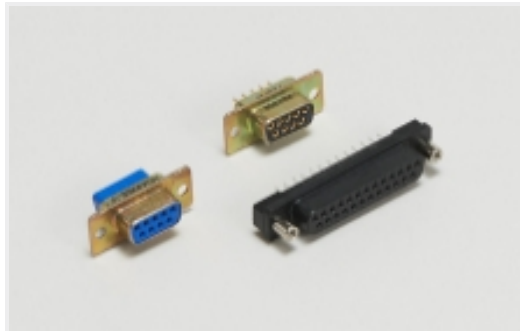
Product Compliance Disclaimer

This information is provided based on reasonable inquiry of our suppliers and represents our current actual knowledge based on the information they provided. This information is subject to change. The part numbers that TE has identified as EU RoHS compliant have a maximum concentration of 0.1% by weight in homogenous materials for lead, hexavalent chromium, mercury, PBB, PBDE, DBP, BBP, DEHP, DIBP, and 0.01% for cadmium, or qualify for an exemption to these limits as defined in the Annexes of Directive 2011/65/EU (RoHS2). Finished electrical and electronic equipment products will be CE marked as required by Directive 2011/65/EU. Components may not be CE marked. Additionally, the part numbers that TE has identified as EU ELV compliant have a maximum concentration of 0.1% by weight in homogenous materials for lead, hexavalent chromium, and mercury, and 0.01% for cadmium, or qualify for an exemption to these limits as defined in the Annexes of Directive 2000/53/EC (ELV). Regarding the REACH Regulation, the information TE provides on SVHC in articles for this part number is based on the latest European Chemicals Agency (ECHA) 'Guidance on requirements for substances in articles' posted at this URL: <https://echa.europa.eu/guidance-documents/guidance-on-reach>

Compatible Parts



Also in the Series | **AMPLIMITE HD-20**

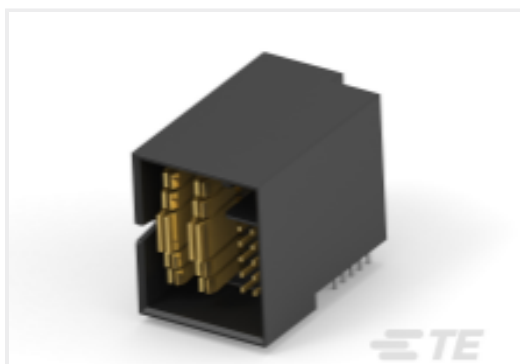
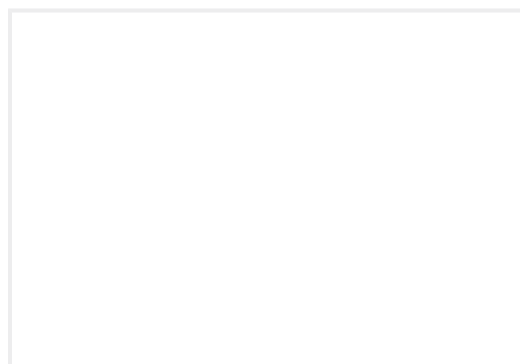
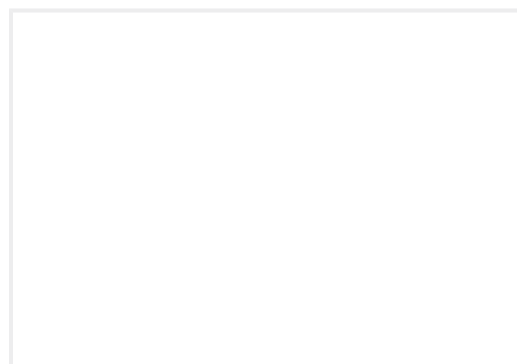
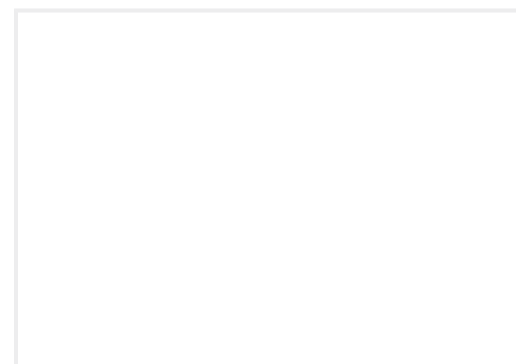
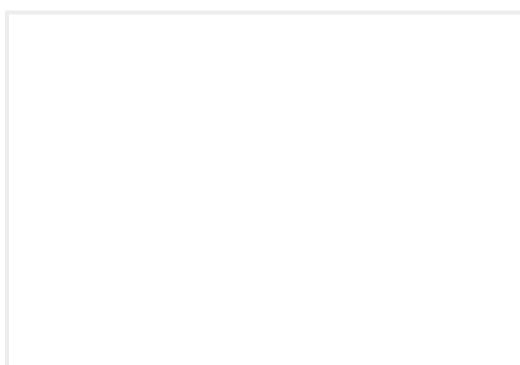


D-Shaped Connectors(285)



PCB D-Sub Connectors(285)

Customers Also Bought

TE Part #5-102203-5
08 MODII HDR SRRA SHRD LFTE Part #206554-1
CPC PLUG ASSEMBLY SIZE 17-16TE Part #1-770166-1
02P MINI UMNL ASSY VO SNAU LFTE Part #4-1462037-7
IM07GR=IM RELAY 200mW 24VDCTE Part #2204861-2
MULTI-BEAM HD R/A PLUG 2P+15S
EXTEND PLATE Part #2367202-1
RECEPT CAGE ASSY 1X4 QSFP-DD W
HSTE Part #2367202-2
RECEPT CAGE ASSY 1X4 QSFP-DD W
HSTE Part #2384280-1
RCPT CONN R/A SMT 76 POSN QSFP-
DD WSHRSTE Part #2406955-1
POWER BLOCK, TALLTE Part #1-5536504-4
2MM FB,ASY,192,SIG,HDR,EN,6.50, W
/O Lube

Documents

Product Drawings

15 RCPT SP/MS STD

English

CAD Files

Customer View Model

ENG_CVM_CVM_5205736-7_C.2d_dxf.zip



English

[3D PDF](#)

3D

Customer View Model

[ENG_CVM_CVM_5205736-7_C.3d_igs.zip](#)

English

Customer View Model

[ENG_CVM_CVM_5205736-7_C.3d_stp.zip](#)

English

By downloading the CAD file I accept and agree to the [Terms and Conditions](#) of use.

Product Specifications

[Application Specification](#)

English

Agency Approvals

[UL Report](#)

English