

Features

- Flexible mounting
- Compact
- Precise movement
- High precision
- Magnetic
- Rubber cushioned
- Double acting

RS PRO Double Shaft Cylinder

0180284



RS PRO is the own brand of RS. The RS PRO Seal of Approval is your assurance of professional quality, a guarantee that every part is rigorously tested, inspected, and audited against demanding standards. Making RS PRO the Smart Choice for our customers.

Product Description

The slide cylinders are designed to be used in compact spaces and offer precise movement and positioning. They offer double the output force using their double cylinders with high guiding accuracy and are suitable for use with magnetic switches.

- *Lifting, sliding, moving, pulling and pushing*
- *Packaging, handling, printing, semiconductor, automation, robotics and manufacturing industries*

General Specifications

Stroke	See table below for more details
Bore	See table below for more details
Manufacturer Series	EXSM
Action	Double
Pneumatic Connector	See table below for more details
Maximum Operating Pressure	10 bar
Cushioning Type	Rubber
Bearing Type	Slide

Mechanical Specifications

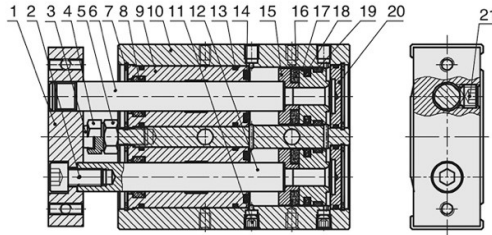
Body	Aluminium
Rod	Steel
Maximum Operating Temperature	80°C
Minimum Operating Temperature	-20°C
Dimensions	See table below for more details
Weight	See table below for more details
Length	See table below for more details

RS PRO EXSM Series Compact Guide Cylinder

Stock No.	Series Model	Bore (mm)	Stroke (mm)	Length (mm)	Height (mm)	Width (mm)	Weight (g)	Pneumatic Connector
235-1146	EXSM	10	10	82	17	46	180	M5x0.8
180284	EXSM	10	20	92	17	46	200	M5x0.8
0180315	EXSM	10	30	102	17	46	220	M5x0.8
0180316	EXSM	10	50	122	17	46	242	M5x0.8
0180318	EXSM	16	10	89	20	58	277	M5x0.8
0180319	EXSM	16	30	109	20	58	300	M5x0.8
0180321	EXSM	16	50	129	20	58	387	M5x0.8
0180324	EXSM	20	50	144	25	64	490	M5x0.8
0180325	EXSM	20	75	169	25	64	520	M5x0.8
0180322	EXSM	20	100	194	25	64	770	M5x0.8

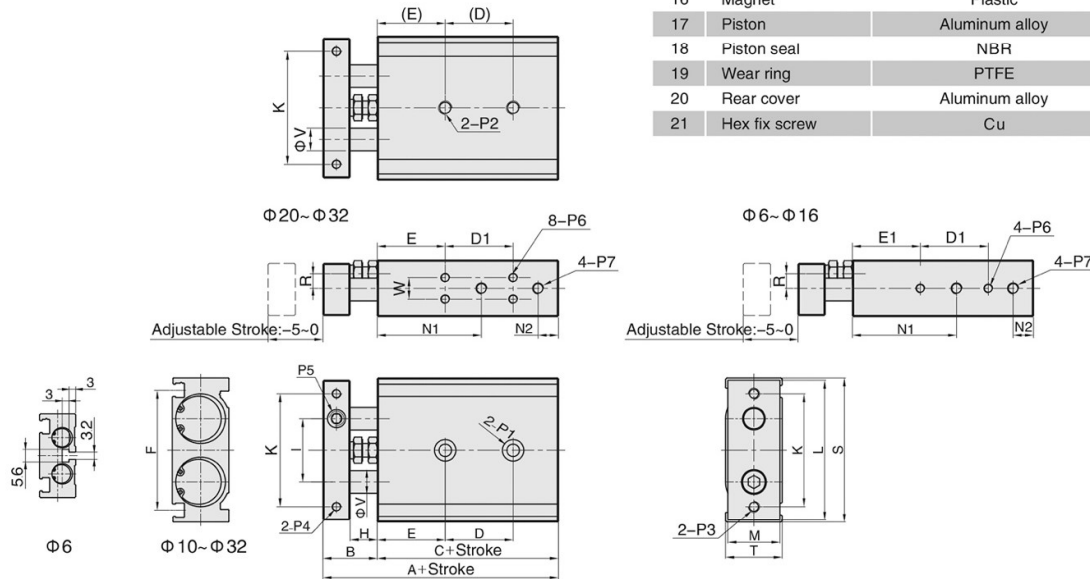
Dimensions

Internal structure



NO.	Part name	Material
1	Fixing plate	Aluminum alloy
2	Nut	Carbon steel
3	Bumper	POM
4	Adjustable nut	Carbon steel
5	Screw	Carbon steel
6	Piston rod	S45C hard chrome carbon steel
7	C clip	Spring steel
8	Wiper seal	NBR
9	Head cover	Aluminum alloy
10	Body	Aluminum alloy
11	Hex fix screw	Cu
12	Piston rod	S45C hard chrome carbon steel
13	O-ring	NBR
14	Anti-bump cushion	TPU
15	Magnet holder	Aluminum alloy
16	Magnet	Plastic
17	Piston	Aluminum alloy
18	Piston seal	NBR
19	Wear ring	PTFE
20	Rear cover	Aluminum alloy
21	Hex fix screw	Cu

Main Dimensions



(mm)

Bore\Sign	A	B	C	D D1								E	E1	F	H	I	K	L	M	N1	N2	R
				10~25	30~50	60~80	90~100	125	150	175	200											
6	58.5	13.5	45	$D=10+Stroke/2$ $D1=13+Stroke$								13	10	25.8	8	16	28	35	14	24.5	6.5	4.5
10	72	17	55	30	40	50	60	-	-	-	-	20	20	36.5	9	20	35	44	15	30	8	3.5
16	79	19	60	25	35	45	55	65	75	145	145	30	30	47.5	9	25	45	56	18	38	8	5
20	94	24	70	30	40	60	60	80	80	100	100	30	-	53	12	28	50	62	23	46	9	6.5
25	96	24	72	30	40	60	60	80	80	100	100	30	-	64	12	35	60	78	28	43	9	9
32	112	30	82	40	50	70	70	90	90	110	110	30	-	76	14	44	75	96	36	53	10	11.5

Bore\Sign	S	T	V	W	P1	P2	P3	P4	P5	P6	P7
6	37	16	4	-	Φ6.5 Dp:3.3; Thru.hole: Φ3.4	-	M3X0.5	M3X0.5	M3X0.5	M3X0.5 Dp:4.5	M5X0.8
10	46	17	6	-	Φ6.5 Dp:3.3; Thru.hole: Φ3.4	M4X0.7 Dp:7	M4X0.7	M3X0.5	M5X0.8	M3X0.5 Dp:5	M5X0.8
16	58	20	8	-	Φ8 Dp:4.4; Thru.hole: Φ4.3	M5X0.8 Dp:8	M5X0.8	M4X0.7	M6X1.0	M4X0.7 Dp:5	M5X0.8
20	64	25	10	9.5	Φ9.5 Dp:5.3; Thru.hole: Φ5.2	M6X1.0 Dp:10	M5X0.8	M4X0.7 Dp:6	M8X1.25	M4X0.7 Dp:5.5	M5X0.8
25	80	30	12	13	Φ11 Dp:6.3; Thru.hole: Φ6.8	M8X1.25 Dp:12	M6X1.0	M5X0.8 Dp:7.5	M8X1.25	M5X0.8 Dp:7	1/8"
32	98	38	16	20	Φ11 Dp:6.3; Thru.hole: Φ6.8	M8X1.25 Dp:12	M6X1.0	M5X0.8 Dp:8	M10X1.5	M5X0.8 Dp:7	1/8"

Accessories

Stock No.	Brand	Product Name	Length	Number of Wires	Connection
235-1167	RS PRO	Magnetic switch	2 mtr	2 wire	N/A