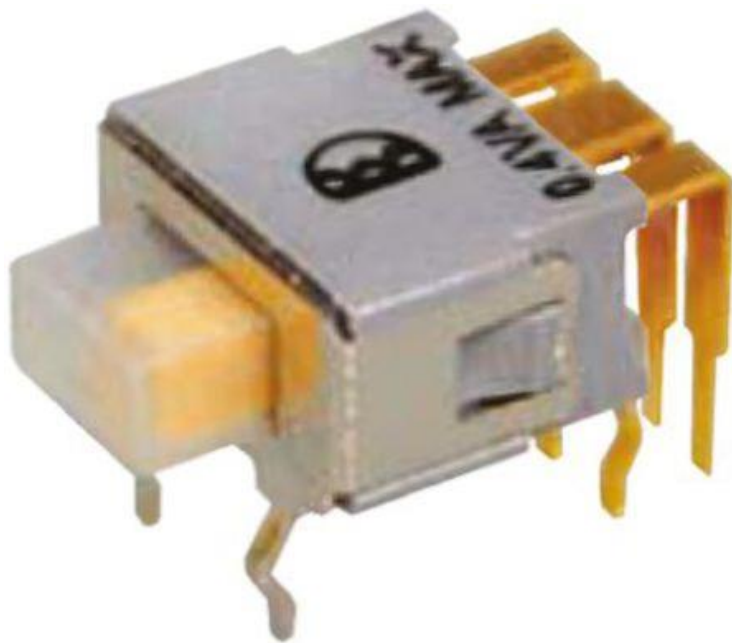


Datasheet

SPDT Slide Switch

RS Stock number 734-7359



SPECIFICATIONS

CONTACT RATING: Max 0.4 VA max @ 48 VAC or DC

MECHANICAL LIFE: minimum 40,000 operations.

CONTACT RESISTANCE: 50m Ω max.

INSULATION RESISTANCE: 500M Ω at 250 VDC. (A)

DIELECTRIC STRENGTH: 500V, 50 Hz for the duration of 1 minute.

OPERATING TEMPERATURE: -20°C to 80°C.

DEGREE OF PROTECTION: IP67

MATERIALS

ACTUATOR - PBT, yellow std.

HOUSING - SPCC

CASE - PBT, Meets (UL94V-0), Washable

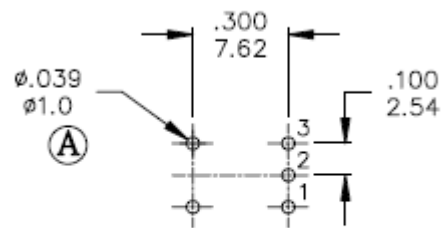
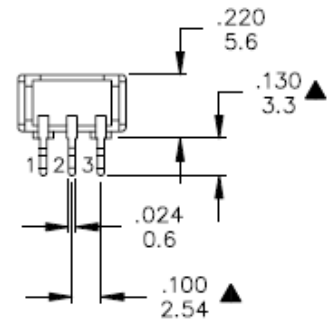
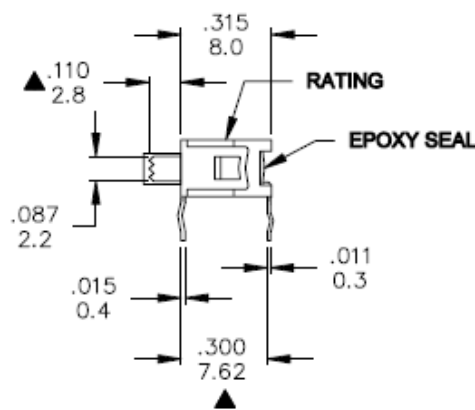
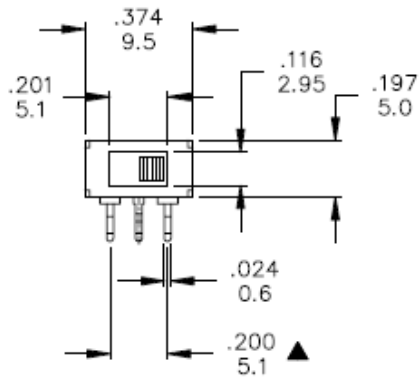
SWITCH SUPPORT - Brass, tin plated.

CONTACT/TERMINALS - Phosphor bronze gold - plated over nickel barrier.

TERMINAL SEAL - Epoxy

RoHS - 2002/95/EC

**Dimensions – inch
mm**



P.C. MOUNTING

Model No.	POS.1	POS.2	POS.3
5SES1	ON	NONE	ON
Term. Comm.	2-1	N/A	2-3
SCHMATIC			

SWITCH FUNCTION