

indicator complete for flush mounting



essential accessories:

- 🛒 lens plastic for flush mounting → 61.18
- 🛒 front bezel-set for flush mounting → 61.20
- 🛒 filament lamp → 61.26; LED → 61.27

	connection method	part no.	circuit drawing	technical drawing	mounting dimension	图例
indicator complete for flush mounting	ST/PT	61-0000.02	1	8	3	0,006

connection method: ST/PT = soldering-/plug-in terminal

marking page 61.47

technical drawing see page 61.36 mounting dimensions see page 61.39, circuit drawing see page 61.44

indicator-/flusher-actuator for flush mounting



essential accessories:

- 🛒 lens plastic for flush mounting → 61.18
- 🛒 front bezel-set for flush mounting → 61.20
- 🛒 filament lamp → 61.26; LED → 61.27
- 🛒 lamp element → 61.22; diode element → 61.22; flasher element → 61.25

	part no.	circuit drawing	technical drawing	mounting dimension	图例
indicator-/flusher-actuator for flush mounting	61-0009.0	1	9	3	0,005

marking see page 61.47

technical drawing see page 61.37 mounting dimensions see page 61.39, circuit drawing see page 61.44

lens plastic for flush mounting

	shape	lens/support	colour	□ 24 x 30 mm part no.	□ 24 x 24 mm part no.	25 mm dia. part no.	PR
lens plastic for flush mounting matt	flat	transparent/translucent	blue	61-9681.6	61-9671.6	61-9642.6	0,001
			colourless, clear	61-9681.7		61-9642.7	0,001
					61-9671.7		0,001
				green	61-9681.5	61-9671.5	61-9642.5
			orange			61-9642.3	0,001
			red	61-9681.2	61-9671.2	61-9642.2	0,001
			smoked			61-9642.1	0,001
			yellow	61-9681.4	61-9671.4	61-9642.4	0,001
matt (not for film insert and LED)	flat	translucent/translucent	white	61-9281.9	61-9271.9		0,001
matt (not for film insert and illumination)	flat	opaque/translucent	black	61-9781.0	61-9771.0		0,001
			grey	61-9781.8	61-9771.8		0,001



lens metal with window

	shape	lens	colour	25 mm dia. part no.	PR
lens metal with window matt	flat	aluminium anodized	natural	61-9841.8A	0,002



lens metal

	shape	lens	colour	25 mm dia. part no.	PR
lens metal matt	flat	aluminium anodized	black	61-9841.0	0,002
			blue	61-9841.6	0,002
			green	61-9841.5	0,002
			natural	61-9841.8	0,002
			red	61-9841.2	0,002
			yellow	61-9841.4	0,002



mushroom-head cap

	mushroom	colour	32 mm dia. part no.	PR
mushroom-head cap plastic	opaque	black	61-9593.0	0,004
		green	61-9593.5	0,004
		red	61-9593.2	0,004
		yellow	61-9593.4	0,004



keylock front bezel

for standard lock 311, other lock numbers on request

	□ 18 x 24 mm part no.	□ 24 x 24 mm part no.	□ 18 mm dia. part no.	□ 18 x 18 mm part no.	PR
keylock actuator	61-9230.0	61-9250.0	61-9210.0	61-9220.0	

front bezel-set for flush mounting

	use	material	colour	□ 24 x 30 mm part no.	□ 24 x 24 mm part no.	25 mm dia. part no.	REP	
front bezel-set for flush mounting	keylock/ selector	aluminium anodized	black			61-9932.1	0,006	
						61-9932.1	0,007	
			natural			61-9932.0	0,007	
						61-9932.0	0,006	
	selector	plastic			61-9936.0	61-9932.10	0,007	
	keylock		aluminium plated		61-9931.4	61-9930.4		0,007
			black		61-9931.0	61-9930.0	61-9932.10	0,007
	illuminated pushbutton/ indicator	aluminium anodized	black				61-9933.1	0,006
			natural				61-9933.0	0,006
		plastic	aluminium plated		61-9931.4	61-9930.4		0,007
black				61-9931.0	61-9930.0	61-9933.10	0,007	



front ring

for actuator 24 mm dia.

	material	colour	part no.	REP
front ring	aluminium anodized	black	61-9600.0	0,003
		natural	61-9600.1	0,003



protective front ring

for actuator 24 mm dia.

	material	colour	part no.	REP
protective front ring with silicone membrane	aluminium anodized	black	61-9926.0	0,004

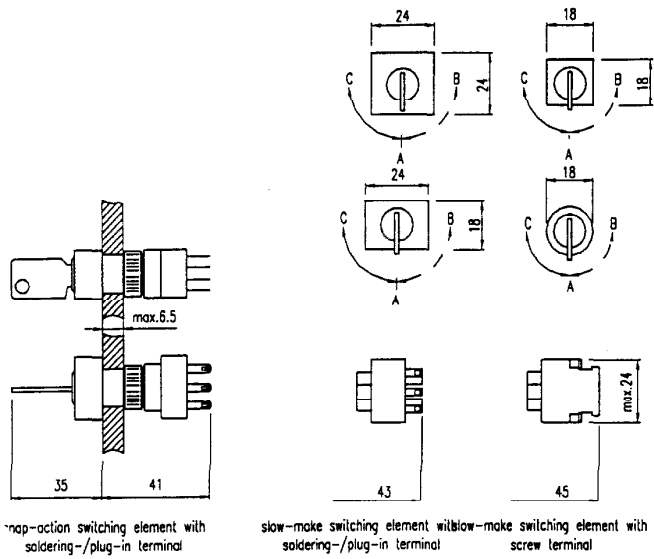
protective cover

	front dimension pushbutton	part no.	technica drawing	REP
protective cover hinged, transparent, with means for sealing	□	51-925	15	0,005
	□	61-9920.0	16	0,006
	□	51-920	14	0,005

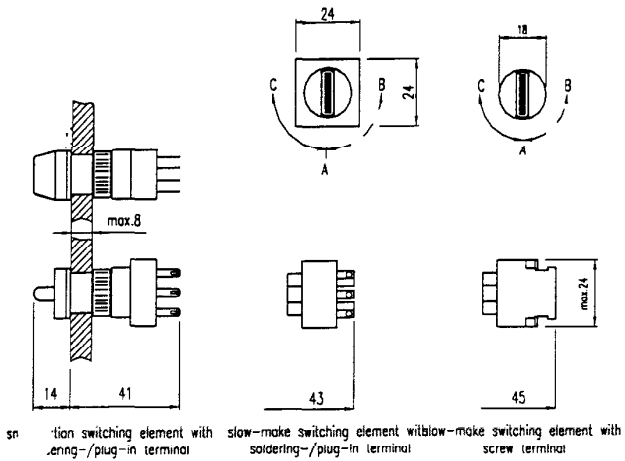


technical drawing see page 61.38

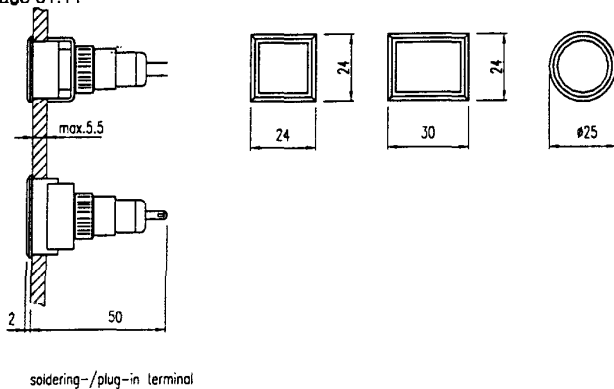
6 keylock switch actuator 2 positions, keylock switch actuator 3 positions
page 61.7, 61.8



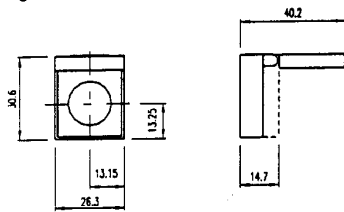
7 selector switch actuator 2 positions, selector switch actuator 3 positions
page 61.9, 61.10



8 indicator complete for flush mounting
page 61.11

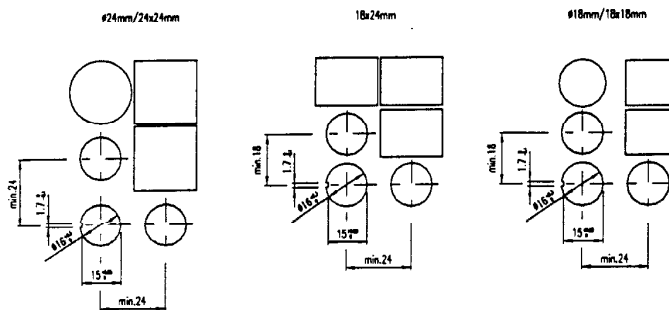


16 protective cover
page 61.20

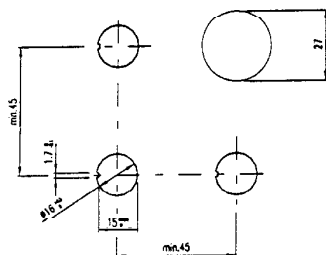


mounting dimensions

1 indicator complete, indicator-/flusher-actuator, illuminated-/pushbutton actuator, keylock switch actuator 2 positions, keylock switch actuator 3 positions, selector switch actuator 2 positions, selector switch actuator 3 positions, blind plug projecting
page 61.5, 61.6, 61.7, 61.8, 61.9, 61.10, 61.21



2 emergency stop switch actuator foolproof, pushbutton actuator with mushroom-head cap, pushbutton actuator for flush mounting
page 61.6, 61.7, 61.12



3 indicator complete for flush mounting, indicator-/flusher-actuator for flush mounting, illuminated-/pushbutton actuator for flush mounting, keylock switch actuator with 2 positions for flush mounting, keylock switch actuator 3 positions for flush mounting, selector switch actuator 2 positions for flush mounting, selector switch actuator 3 positions for flush mounting, blind plug flat
page 61.11, 61.12, 61.13, 61.14, 61.15, 61.16, 61.21

