

Medioambiente

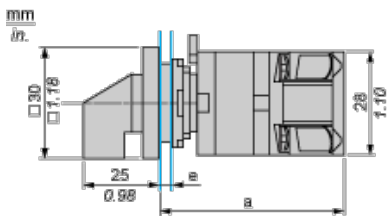
normas	CENELEC EN 50013 EN/IEC 60947-3 EN/IEC 60947-5-1
certificaciones de producto	CULus
Tratamiento de protección	TC
Temperatura ambiente de funcionamiento	-20...55 °C
temperatura ambiente de almacenamiento	-40...70 °C
Clase de protección contra descargas eléctricas	Clase II acorde a IEC 60536

Contractual warranty

Warranty period	18 months
-----------------	-----------

Cam Switch

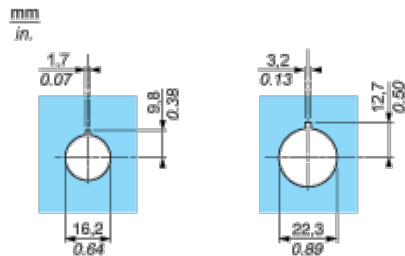
Front Mounting by $\varnothing 16$ mm/0.63 in. or $\varnothing 22$ mm/0.87 in. hole



- a 51 mm/2.01 in.
- e support panel thickness: 0.5 mm to 5 mm/0.02 in. to 0.2 in.

Cam Switch

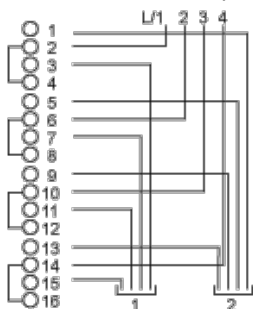
$\varnothing 16$ mm/0.63 in. and $\varnothing 22$ mm/0.87 in. Panel Cut-outs



Link Positions (Factory Mounted)

Diagram for 1 to 4-pole Switches

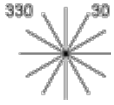
Select the number of poles according to the product characteristics.



Marking



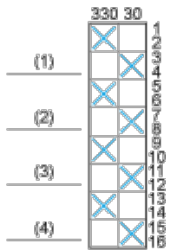
Angular Position of Switch



Switching Program

Diagram for 1 to 4-pole Switches

Select the number of poles according to the product characteristics.



- (1) 1-pole
- (2) 2-pole
- (3) 3-pole
- (4) 4-pole

Convention Used for Switching Program Representation

- Contact closed
- Contact closed in 2 positions and maintained between the 2 positions
- Sealed assembly for auto-maintain control
- Overlapping contacts
- Spring return position: for a switching angle of 90°, spring return is over 30° after the last position (for a maximum of 3 simultaneous contacts).

Example:

