



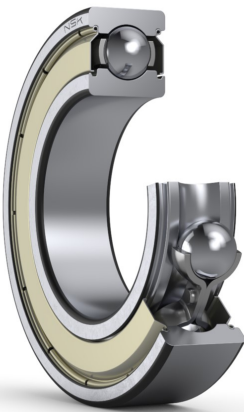
PRODUCT DATASHEET

Datasheet creation date: 2025/05/28 8:16 (UTC)



6210ZZ

Single-Row Deep Groove Ball Bearings



Boundary Dimensions

d	50	mm	Bore diameter
D	90	mm	Outside diameter
B	20	mm	Width
r (min.)	1.1	mm	Chamfer dimension

Basic Load Ratings

Cr	38500	N	Basic dynamic load rating
C0r	23200	N	Basic static load rating

Speeds

Grease	8000	min-1	Grease lubrication
--------	------	-------	--------------------

Abutment and Fillet Dimensions

da (min.)	56.5	mm	Diameter of shaft abutment
da (max.)	60	mm	Diameter of shaft abutment
Da (max.)	83.5	mm	Diameter of housing abutment
ra (max.)	1	mm	Radius of shaft or housing fillet

Calculation factors

fo	14.4		Factor
----	------	--	--------

Additional information

z	10		Number of Balls
Dw	12.7	mm	Ball Diameter

Mass

Mass approx.	0.459	kg	Mass approx.
--------------	-------	----	--------------

