



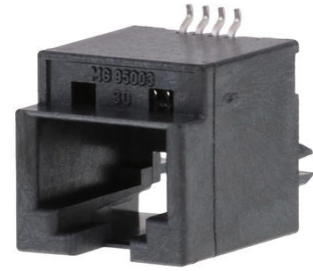
**Part Number :** [955036651](#)

**Product Description :** Modular Jack, Vertical, Top Entry, Surface Mount, 6/4, Low Profile, Tube

**Series Number :** 95503

**Status :** Active

**Product Category :** Modular Jacks and Plugs



---

## Documents & Resources

### Drawings

[955036651\\_sd.pdf](#)

[PK-95003-003.pdf](#)

### 3D Models and Design Files

[STEP AP242](#)

[SOLIDWORKS](#)

[Creo](#)

### Specifications


[AS-85513-001-001.pdf](#)

[PS-95503-001-001.pdf](#)

---

## Product Environment Compliance

### Compliance

GADSL/IMDS	Not Relevant
China RoHS	 per SJ/T 11365-2006
EU ELV	Not Relevant
Low-Halogen Status	Low-Halogen per IEC 61249-2-21
REACH SVHC	Not Contained per D(2025)4165-DC (25 June 2025)
EU RoHS	Compliant per EU 2015/863

### [Compliance Statements](#)

- EU RoHS
- REACH SVHC

- Low-Halogen

#### Industry Documents

- IPC 1752A Class C
- IPC 1752A Class D
- Molex Product Compliance Declaration
- IEC-62474
- chemSHERPA (xml)

#### Substances of Interest

- PFAS

#### EU RoHS Certificate of Compliance

#### Additional Product Compliance Information

---

## Part Details

### General

Status	Active
Category	Modular Jacks and Plugs
Series	95503
Description	Modular Jack, Vertical, Top Entry, Surface Mount, 6/4, Low Profile, Tube
Comments	Reflow Capable
Component Type	PCB Jack
Magnetic	No
Performance Category	3
Power over Ethernet (PoE)	N/A
Product Name	Modular Jack 6/4
UPC	800756804354

### Agency

UL	E107635
----	---------

### Electrical

Current - Maximum per Contact	1.5A
Shielded	No
Voltage - Maximum	125V DC

### Physical

Boot Color	N/A
Color - Resin	Black
Durability (mating cycles max)	2500
Flammability	94V-0
Inverted / Top Latch	No
Jack Height	15.70mm
Keying to Mating Part	None
Lightpipes/LEDs	None
Material - Metal	Copper Alloy
Material - Plating Mating	Gold over Palladium Nickel
Material - Plating Termination	Tin
Material - Resin	High Temperature Thermoplastic
Net Weight	2.200/g
Orientation	Vertical (Top Entry)
Packaging Type	Tube
PCB Locator	Yes
PCB Retention	Yes
PCB Thickness - Recommended	1.57mm
Pitch - Mating Interface	1.02mm
Pitch - Termination Interface	1.27mm
Plating min - Mating	0.051µm, 1.016µm
Plating min - Termination	1.905µm
Port Configuration	1x1
Positions / Loaded Contacts	6/4
Temperature Range - Operating	-40° to +85°C
Termination Interface Style	Surface Mount
Waterproof / Dustproof	No
Wire/Cable Type	N/A

### Solder Process Data

Max-Duration	40
Lead-Free Process Capability	REFLOW
Max-Cycle	3
Max-Temp	260

This document was generated on Nov 10, 2025