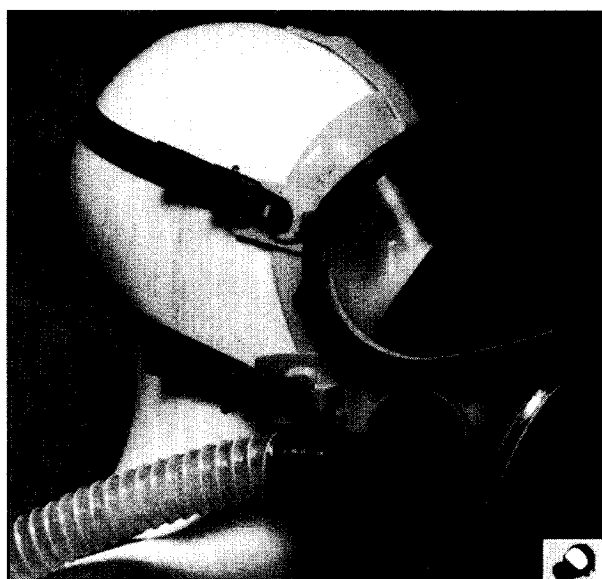




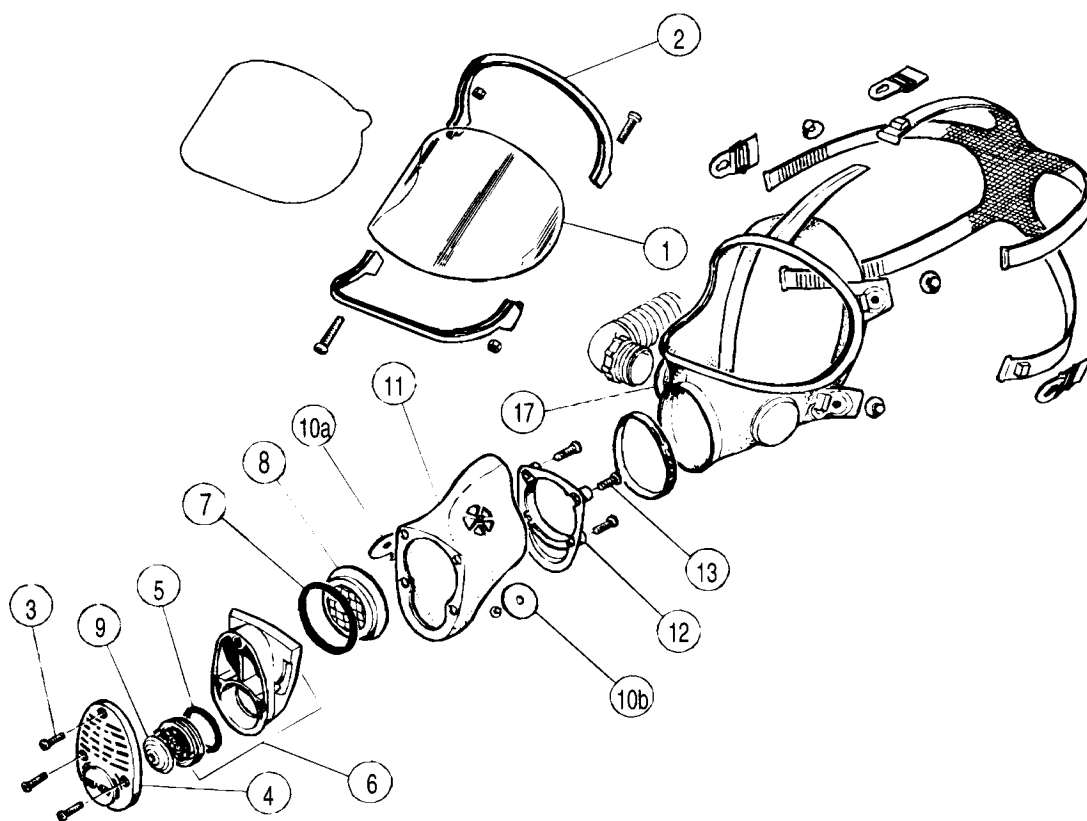
## **TORNADO T7**

### ***Respiratory Protective Systems***



<b>(GB)</b>	<b><i>Operating and Maintenance Instructions.....</i></b>	<b><i>1</i></b>
<b>(D)</b>	<b><i>Betriebs- und Wartungsanleitung.....</i></b>	<b><i>4</i></b>
<b>(NL)</b>	<b><i>Gebruiks- en onderhoudsaanwijzingen .....</i></b>	<b><i>7</i></b>
<b>(F)</b>	<b><i>Instructions d'utilisation et d'entretien.....</i></b>	<b><i>10</i></b>
<b>(E)</b>	<b><i>Instrucciones de Funcionamiento y Mantenimiento .....</i></b>	<b><i>13</i></b>
<b>(P)</b>	<b><i>Instruções Operacionais e de Manutenção .....</i></b>	<b><i>16</i></b>
<b>(I)</b>	<b><i>Instrucciones de Funcionamiento y Mantenimiento .....</i></b>	<b><i>19</i></b>
<b>(DK)</b>	<b><i>Operations og vedligeholdelses instruktioner .....</i></b>	<b><i>22</i></b>
<b>(S)</b>	<b><i>Bruksanvisning och skötselinstruktioner.....</i></b>	<b><i>25</i></b>
<b>(N)</b>	<b><i>Bruks- og vedlikeholdsveiledning .....</i></b>	<b><i>28</i></b>
<b>(FIN)</b>	<b><i>Käyttö- ja huolto-ohjeet .....</i></b>	<b><i>31</i></b>











**T7**



## WARNING

-  **TORNADO powered respirators are designed for use by personnel who are familiar with workplace hazards.**
-  **This leaflet must be read together with the user leaflet for t/POWER and T/FILTER.**
-  **DO NOT use in oxygen deficient atmospheres (<19.5%) or areas immediately dangerous to life or health.**
-  **DO NOT use equipment that is damaged.**
-  **DO NOT use with a low airflow output.**
-  **T7 is not suitable for use with T/A/LINE.**

## T7 SPECIFICATION

Facepiece		T7/SM and T7/ML
Description		Full Facemask
Classification:	T7 Visor	prEN 12942 TM3 Meets impact requirements of EN 166 Grade B
Minimum design flow rate		120 L/min
Nominal (Assigned*) protection factor		2,000(40)
Operating temperature range		-10°C to 50°C
Material		Silicone elastomer

*\*According to BS4275 : 1997*

## WEARING

1. Hang the mask from the neck by its neckstrap. Grasp the side of the headharness with thumbs inside straps, place the chin in the chin-cup and pull the straps over the head.
2. Adjust the mask to give a comfortable fit and gently tighten the head harness straps in sequence: bottom, side then the top until a good seal is achieved. DO NOT use of excessive force when tightening the straps as this distorts the mask, and causes discomfort without improving the seal.
3. Check the face to mask seal before connecting the blower air hose by blocking the mask inlet and breathing in. The mask should collapse on to the face.
4. Hold the breath for ten seconds. If there is leakage the mask moves away from the face. If there is a leak adjust the harness and repeat the test. If a good seal cannot be achieved it may be necessary to try an alternative type of headtop.
5. Connect the hose to the facemask, check that the elbow is at a suitable angle and fully tighten the nut.
6. Arrange the breathing hose so that it trails freely down the back and is not kinked or likely to snag.
7. See the T/POWER leaflet for further user information.

## AFTER USE

1. DO NOT remove the facemask until well clear of the hazard area.
2. Detach the air hose from the facemask and use a synthetic sponge moistened in a mild solution of soap and warm water to clean the mask and outside of the hose.

**Note:** Water MUST NOT enter the hose.

3. Rinse the mask thoroughly under clean running water and hang it from its neckstrap until thoroughly dry. DO NOT use radiant heat or sunlight.
4. Use TriGene wipes to sanitise the face seal. Care should be taken not to scratch the visor.

## FITTING

### Replacement of visor:

1. Unscrew the two visor clamp screws and remove the visor clamps (2) and remove visor (1) from facemask.
2. Replace in reverse order ensuring that moulded witness marks on the visor are in line with the centre line of the facemask.
3. Lubricate the visor clamp grooves with a solution of soap and water to ease assembly.

### Replacement of valves and seals:

1. Undo the two front cover screws (3), remove the cover (4) and pull the exhalation valve assembly (6) from the facemask.
2. Inspect and replace the complete valve assembly if damaged. If undamaged remove valve flap (9) from centre locating pin and O-ring (5) from valve frame.
3. Clean the frame, lightly grease the O-ring and fit the valve flap.
4. Press the exhalation valve assembly firmly into its housing.
5. Replace front cover and tighten screws evenly.
6. Carefully pull the inhale valve flaps and pins (10a/b) from the facemask and fit new valve flaps and pins.

**Important:** Check the valve flaps visually every 3 months to ensure that they are clean and undamaged. Check that the inhalation valve flaps are flexible. Valve flaps must be replaced annually.

**Storage Note:** Rubber components should always be stored in clean dry conditions away from direct sunlight and heat.

### Replacement of front fitting inner mask and speech diaphragm:

1. Undo the four screws (13), remove clamp plate (12) and gently pull the inner mask (11) from inside the mask.
2. Remove the inner mask speech diaphragm assembly (8) it is first necessary to remove the outer plate cover (4).
3. The speech diaphragm should be removed by gently pushing against the back grill moulding with a blunt instrument which is sufficiently large not to slip through and damage the membrane.
4. Use the tool for mask clamps to release the front fitting clamp and remove the front fitting (6).
5. Insert the new front fitting (6) and use the mask clamp tool to fit the front fitting clamp.
6. Lightly grease the speech diaphragm O-ring and fit to the speech diaphragm.
7. Locate the inner mask on the front fitting and fit the diaphragm and O-ring assembly into the front fitting. Place the clamp plate over the speech diaphragm and fit retaining screws and tighten evenly.
8. Replace front cover and tighten the screws evenly.

## SPARE PARTS

DESCRIPTION	Part No.
Visor and Visorguard	071.102.91
Clamp and screw pack for visor (2)	071.105.99
Button pack (7)	071.270.99
Neckstrap assembly	071.126.99
Head harness	071.120.98
Buckle pack (5)	008.017.99
Support pack (5)	071.302.99
Tool for mask clamps	074.237.00
Screw pack for front cover	030.080.99
Grease	074.101.02
Front fitting with speech diaphragm, inner mask, exhalation valve with front cover	071.682.99
Inhale valve body assembly	071.128.99
Exhalation valve assembly with O-ring	071.212.99

DESCRIPTION	Part No.
Silicone outer mask with: visor, Visorguard and clamps, inhale valves and side fitting:	
T7/SM	071.683.99
T7/ML	071.132.80
Front cover and screw pack (2)	071.266.93
Inhale valves(2) and exhale valve flap (6)	071.114.99
O-ring pack for exhale valve (5)	054.066.99
O-ring pack for speech diaphragm	054.067.99
Speech diaphragm assembly with O-ring (5)	071.211.99
Front fitting clamp (5)	014.038.97
Clamp plate (1)	071.203.99
Screw pack for clamp plate (5)	030.065.99
Air hose	T7/HOSE

## NOTIFIED BODY

Inspec Certification Ltd (Number 0194),  
The Buckland Wharf, Buckland Wharf,  
Aylesbury, Buckinghamshire, HP22 SLO,  
United Kingdom