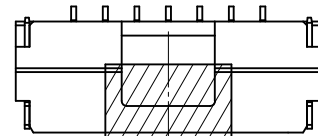
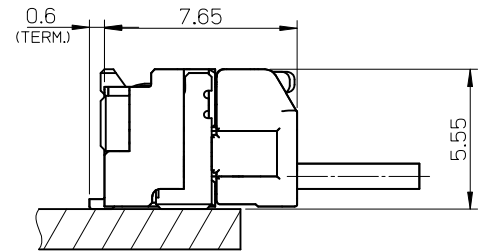
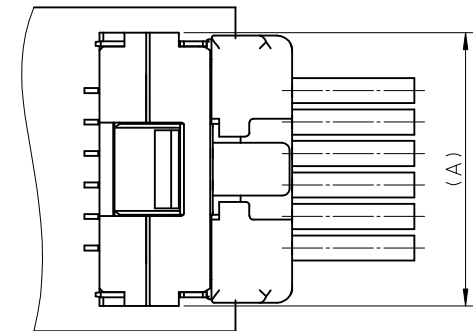


SECTION Z-Z

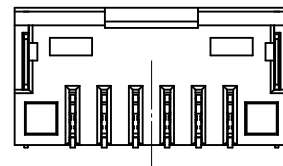
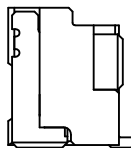
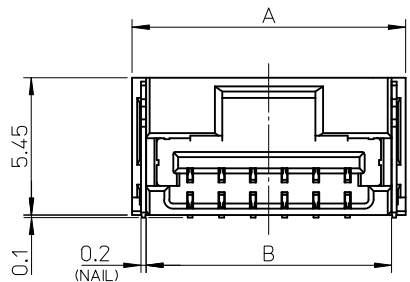


カプトンテープ付き  
WITH KAPTON TAPE



嵌合図

MATED CONNECTORS



NOTES

1. 嵌合相手: 502380-\*\*\*\*  
MATE WITH : 502380-\*\*\*\*
2. 端子テール部 及び ネイルの平坦度: 0.1MAX.  
TAIL AND NAIL COPLANARITY TO BE 0.1 MAX.
3. 極数/2=偶数に適用.  
APPLY FOR CKT. SIZE / 2 = EVEN.
4. 端子テール部 及び ネイルに錫めっきを使用しているため、  
外観に摺動痕が付く場合が御座います。  
THE WOUND OF FRICTION MIGHT ADHERE TO EXTERNALS  
BECAUSE THE TIN PLATING IS USED FOR THA TAIL AND NAIL.
5. 本製品のプラスチック部に黒点等が確認される場合や  
色合いが異なる場合がありますが、製品性能に影響はありません。  
THERE IS NO INFLUENCE IN THE PRODUCT PERFORMANCE THOUGH  
THE BLACK SPOT ETC. MIGHT BE CONFIRMED TO THE PLASTIC PART  
OF THIS PRODUCT AND THE SHADE MIGHT BE DIFFERENT.
6. ELV 及び RoHS 適合品  
ELV AND RoHS COMPLIANT

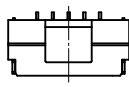
|     |      |      |       |  |                |
|-----|------|------|-------|--|----------------|
| 3.4 | 7.5  | 11   | 12.1  | 502386-07**                                | 7              |
| 3.4 | 6.25 | 9.75 | 10.85 | 502386-06**                                | 6              |
| 3.4 | 5    | 8.5  | 9.6   | 502386-05**                                | 5              |
| 3.4 | 3.75 | 7.25 | 8.35  | 502386-04**                                | 4              |
| 2.6 | 2.5  | 6    | 7.1   | 502386-03**                                | 3              |
| 2.2 | 1.25 | 4.75 | 5.85  | 502386-02**                                | 2              |
| D   | C    | B    | A     | EMBOSSSED TAPE PACKAGE<br>オーダー番号 ORDER No. | 極数<br>CKT. NO. |

| 番号<br>NO. | 部品<br>PART        | 材質<br>MATERIAL   |
|-----------|-------------------|--|
| ①         | ハウジング<br>HOUSING  | 耐熱性樹脂 UL94V-0 色:SHEET 3 参照<br>HEATPROOF RESIN UL94V-0 COLOR : SEE SHEET 3  |
| ②         | ターミナル<br>TERMINAL | 銅合金<br>COPPER ALLOY<br>錫めっき : 1.0 micro-meter MIN.<br>TIN (TAIL AREA)<br>ニッケルめっき(下地): 1.0 micro-meter MIN.<br>NICKEL (UNDER PLATING) |
| ③         | ネイル<br>NAIL       | 銅合金<br>COPPER ALLOY<br>錫めっき: 1.0 micro-meter MIN.<br>TIN<br>ニッケルめっき(下地): 1.0 micro-meter MIN.<br>NICKEL (UNDER PLATING)              |

|  |                    |  |       |                            |                               |  |                        |                           |  |
|--|--------------------|--|-------|----------------------------|-------------------------------|--|------------------------|---------------------------|--|
| REVISED<br>EC NO.: J2013-0870<br>DRWN: KWASHIO 2013/02/07<br>CHKD: KASAKAWA 2013/02/13<br>APPR: YO ITO 2013/02/13                        | DESCRIPTION<br>REV | GENERAL TOLERANCES<br>(UNLESS SPECIFIED) |       | DIMENSION STYLE<br>MM ONLY |                               | SCALE<br>5:1   | DESIGN UNITS<br>METRIC | THIRD ANGLE<br>PROJECTION |  |
|  |                    | 10 UNDER                                 | ±0.2  | DRAWN BY<br>T. MIYAZAKI    | DATE<br>2006/08/28            | TITLE<br>1.25 W/B CONN. SINGLE<br>R/A REC. ASS'Y 2-7CKT. |                        |                           |  |
|  |                    | 10 OVER 30 UNDER                         | ±0.25 | CHECKED BY<br>K. ASAKAWA   | DATE<br>2006/08/28            |  |                        |                           |  |
|  |                    | 30 OVER                                  | ±0.3  | APPROVED BY<br>YO. ITO     | DATE<br>2006/08/28            |  |                        |                           |  |
| ANGULAR ±3 °<br>DRAFT WHERE APPLICABLE<br>MUST REMAIN<br>WITHIN DIMENSIONS   |                    | SEE TABLE                                |       | MATERIAL NO.               | DOCUMENT NO.<br>SD-502386-001 | SHEET NO.<br>1 OF 3                                      |                        |                           |  |
| SIZE A3 THIS DRAWING CONTAINS INFORMATION THAT IS PROPRIETARY TO MOLEX<br>INCORPORATED AND SHOULD NOT BE USED WITHOUT WRITTEN PERMISSION |                    |  |       |                            |                               |  |                        |                           |  |



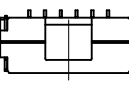
2 CKT.



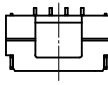
5 CKT.



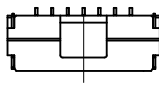
3 CKT.



6 CKT.



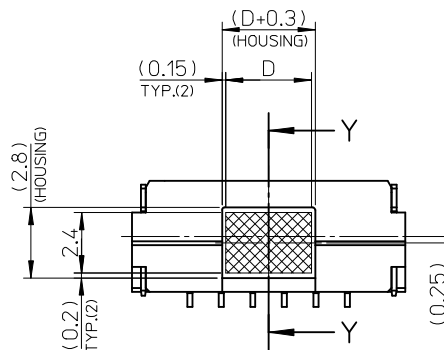
4 CKT.



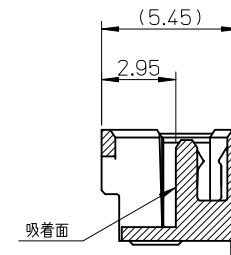
7 CKT.

極数の種類

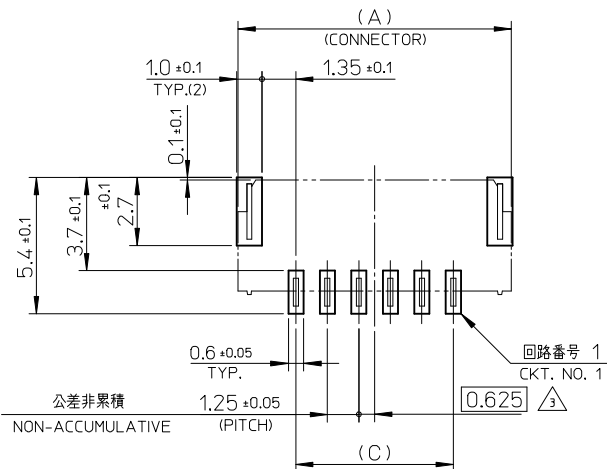
KIND OF CKT. NO.(FRONT VIEW)



吸着範囲  
VACUME AREA

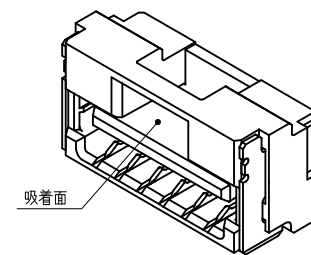


SECTION Y-Y



基板パターンレイアウト (参考)


RECCOMENDED P.C.B. PATTERN LAYOUT (REF.)

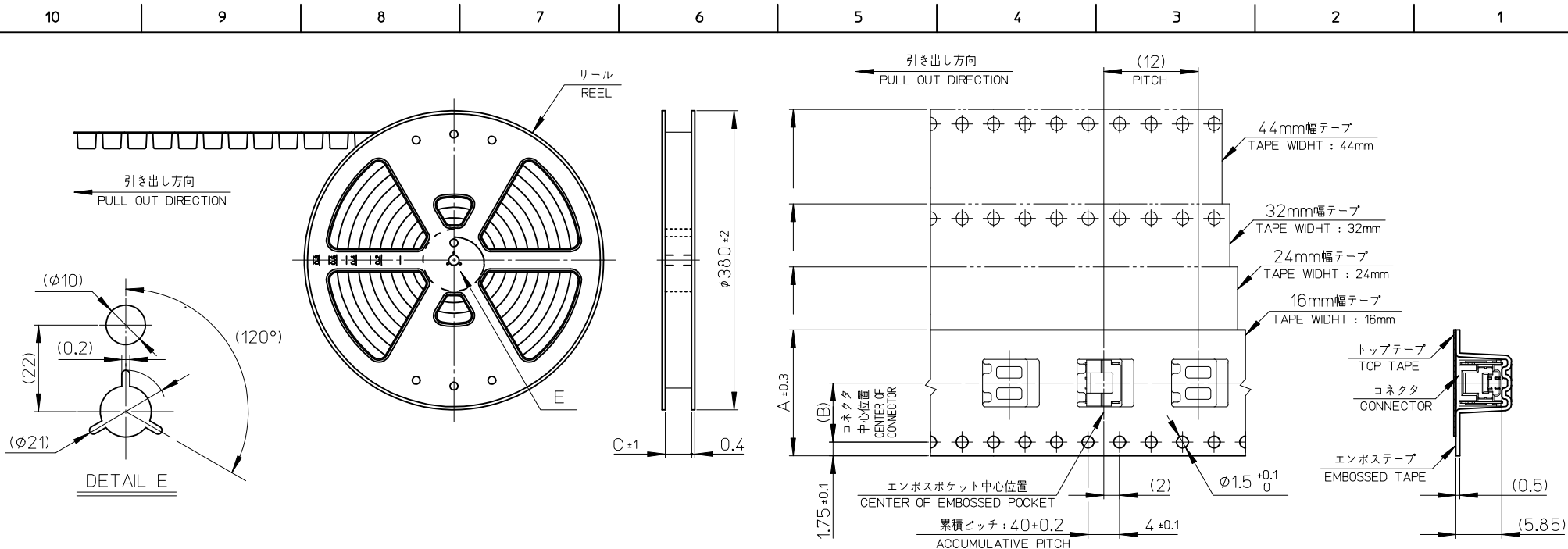


|   |  |       |                            |   |  |                        |
|---|--|-------|----------------------------|---|--|------------------------|
| REVISED<br>EC NO: J2013-0870<br>DRWN: KWASHIO 2013/02/07<br>CHKD: KASAKAWA 2013/02/13<br>APPR: Y01TO 2013/02/13 | GENERAL TOLERANCES (UNLESS SPECIFIED)                |       | DIMENSION STYLE<br>MM ONLY | SCALE<br>5:1  | DESIGN UNITS<br>METRIC   | THIRD ANGLE PROJECTION |
|   | 10 UNDER   | ±0.2  | DRAWN BY<br>T. MIYAZAKI    | DATE<br>2006/08/28  | TITLE<br>1.25 W/B CONN. SINGLE R/A REC. ASS'Y 2-7CKT.          |                        |
|   | 10 OVER 30 UNDER                                     | ±0.25 | CHECKED BY<br>K. ASAKAWA   | DATE<br>2006/08/28  | <b>molex</b><br>DOCUMENT NO. SD-502386-001<br>SHEET NO. 2 OF 3 |                        |
|   | 30 OVER  | ±0.3  | APPROVED BY<br>Y01. ITO    | DATE<br>2006/08/28  |  |                        |
| ANGULAR ±3 °  | DRAFT WHERE APPLICABLE MUST REMAIN WITHIN DIMENSIONS |       | MATERIAL NO.<br>SEE TABLE  | THIS DRAWING CONTAINS INFORMATION THAT IS PROPRIETARY TO MOLEX INCORPORATED AND SHOULD NOT BE USED WITHOUT WRITTEN PERMISSION |  |                        |

| WITH CAPTON TAPE                          |                              |   |                              |   |                              |   |                              |   |                              |                 |
|---|------------------------------|---|------------------------------|---|------------------------------|---|------------------------------|---|------------------------------|-----------------|
| HSG COLOR : GREEN                         |                              | HSG COLOR : BLUE                          |                              | HSG COLOR : RED                           |                              | HSG COLOR : BLACK                         |                              | HSG COLOR : NATURAL                       |                              |                 |
| 502386-0736                               | 502386-**16                  | 502386-0734                               | 502386-**14                  | 502386-0732                               | 502386-**12                  | 502386-0731                               | 502386-**11                  | 502386-0772                               | 502386-**08                  | 7               |
| 502386-0636                               |                              | 502386-0634                               |                              | 502386-0632                               |                              | 502386-0631                               |                              | 502386-0672                               |                              | 6               |
| 502386-0536                               |                              | 502386-0534                               |                              | 502386-0532                               |                              | 502386-0531                               |                              | 502386-0572                               |                              | 5               |
| 502386-0436                               |                              | 502386-0434                               |                              | 502386-0432                               |                              | 502386-0431                               |                              | 502386-0472                               |                              | 4               |
| 502386-0336                               |                              | 502386-0334                               |                              | 502386-0332                               |                              | 502386-0331                               |                              | 502386-0372                               |                              | 3               |
| 502386-0236                               |                              | 502386-0234                               |                              | 502386-0232                               |                              | 502386-0231                               |                              | 502386-0272                               |                              | 2               |
| EMBOSSSED TAPE PACKAGE<br>オーダー番号ORDER No. | コネクタ シリズ<br>CONNECTOR SIRIES | EMBOSSSED TAPE PACKAGE<br>オーダー番号ORDER No. | コネクタ シリズ<br>CONNECTOR SIRIES | EMBOSSSED TAPE PACKAGE<br>オーダー番号ORDER No. | コネクタ シリズ<br>CONNECTOR SIRIES | EMBOSSSED TAPE PACKAGE<br>オーダー番号ORDER No. | コネクタ シリズ<br>CONNECTOR SIRIES | EMBOSSSED TAPE PACKAGE<br>オーダー番号ORDER No. | コネクタ シリズ<br>CONNECTOR SIRIES | 極数<br>(XT. NO.) |

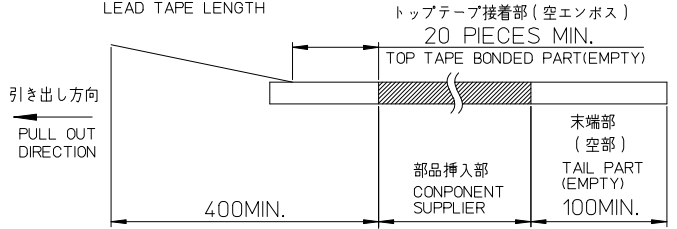
| WITHOUT CAPTON TAPE                       |                              |   |                              |   |                              |   |                              |   |                              |                 |
|---|------------------------------|---|------------------------------|---|------------------------------|---|------------------------------|---|------------------------------|-----------------|
| HSG COLOR : GREEN                         |                              | HSG COLOR : BLUE                          |                              | HSG COLOR : RED                           |                              | HSG COLOR : BLACK                         |                              | HSG COLOR : NATURAL                       |                              |                 |
| 502386-0746                               | 502386-**26                  | 502386-0744                               | 502386-**24                  | 502386-0742                               | 502386-**22                  | 502386-0741                               | 502386-**21                  | 502386-0770                               | 502386-**09                  | 7               |
| 502386-0646                               |                              | 502386-0644                               |                              | 502386-0642                               |                              | 502386-0641                               |                              | 502386-0670                               |                              | 6               |
| 502386-0546                               |                              | 502386-0544                               |                              | 502386-0542                               |                              | 502386-0541                               |                              | 502386-0570                               |                              | 5               |
| 502386-0446                               |                              | 502386-0444                               |                              | 502386-0442                               |                              | 502386-0441                               |                              | 502386-0470                               |                              | 4               |
| 502386-0346                               |                              | 502386-0344                               |                              | 502386-0342                               |                              | 502386-0341                               |                              | 502386-0370                               |                              | 3               |
| 502386-0246                               |                              | 502386-0244                               |                              | 502386-0242                               |                              | 502386-0241                               |                              | 502386-0270                               |                              | 2               |
| EMBOSSSED TAPE PACKAGE<br>オーダー番号ORDER No. | コネクタ シリズ<br>CONNECTOR SIRIES | EMBOSSSED TAPE PACKAGE<br>オーダー番号ORDER No. | コネクタ シリズ<br>CONNECTOR SIRIES | EMBOSSSED TAPE PACKAGE<br>オーダー番号ORDER No. | コネクタ シリズ<br>CONNECTOR SIRIES | EMBOSSSED TAPE PACKAGE<br>オーダー番号ORDER No. | コネクタ シリズ<br>CONNECTOR SIRIES | EMBOSSSED TAPE PACKAGE<br>オーダー番号ORDER No. | コネクタ シリズ<br>CONNECTOR SIRIES | 極数<br>(XT. NO.) |

|  |  |  |  |  |   |                               |                           |  |
|--|--|--|--|--|---|-------------------------------|---------------------------|--|
| REVISED<br>EC NO.: J2013-0870<br>2013/02/07<br>DRWN:KAWASHIO<br>2013/02/13<br>CHKD:KASAKAWA<br>2013/02/13<br>APPR:YO ITO<br>2013/02/13 | GENERAL TOLERANCES<br>(UNLESS SPECIFIED) |  | DIMENSION STYLE<br><b>MM ONLY</b>        |  | SCALE<br>----   | DESIGN UNITS<br><b>METRIC</b> | THIRD ANGLE<br>PROJECTION |  |
|  | 10 UNDER                                 | ±0.2   | DRAWN BY DATE<br>T. MIYAZAKI 2006/08/28  |  | TITLE<br>1.25 W/B CONN. SINGLE<br>R/A REC. ASS'Y 2-7CKT.                              |                               |                           |  |
|  | 10 OVER 30 UNDER                         | ±0.25  | CHECKED BY DATE<br>K. ASAKAWA 2006/08/28 |  |  |                               |                           |  |
|  | 30 OVER                                  | ±0.3   | APPROVED BY DATE<br>YO. ITO 2006/08/28   |  |   |                               |                           |  |
|  | ANGULAR ±3 °                             |  | MATERIAL NO.<br><b>SEE TABLE</b>         |  | DOCUMENT NO.<br><b>SD-502386-001</b>  |                               | SHEET NO.<br>3 OF 3       |  |
| DRAFT WHERE APPLICABLE<br>MUST REMAIN<br>WITHIN DIMENSIONS   |  | SIZE A3 THIS DRAWING CONTAINS INFORMATION THAT IS PROPRIETARY TO MOLEX<br>INCORPORATED AND SHOULD NOT BE USED WITHOUT WRITTEN PERMISSION |  |  |   |                               |                           |  |



**NOTES**

- 製品詳細寸法については、SD-502386-001, -002 を参照下さい。  
PLEASE REFER TO SD-502386-001, -002 FOR THE DETAILED DIMENSION OF THE CONNECTOR.
- 梱包数量 : 1200個  
NUMBER OF CONNECTORS : 1200 PIECES/REEL.
- リードテープ長さ  
LEAD TAPE LENGTH




- 材料  
MATERIAL  
キャリアテープ : ポリスチレン  
CARRIER TAPE : POLYSTYRENE  
トップテープ : ポリエステル, ポリエチレン, ポリエチレンテレフタレート  
TOP TAPE : POLYESTER, POLYETHYLENE, POLYETHYLENE TEREPHTHALATE  
リール : ポリスチレン <リサイクル材を含む>  
REEL : POLYSTYRENE <RECYCLE MATERIAL CONTAINED>
- ELV 及び RoHS 適合品  
ELV AND RoHS COMPLIANT

|      |      |    |             |    |
|------|------|----|-------------|----|
| 45.5 | 20.2 | 44 | 502386-15** | 15 |
| 45.5 | 20.2 | 44 | 502386-14** | 14 |
| 33.5 | 14.2 | 32 | 502386-13** | 13 |
| 33.5 | 14.2 | 32 | 502386-12** | 12 |
| 33.5 | 14.2 | 32 | 502386-11** | 11 |
| 33.5 | 14.2 | 32 | 502386-10** | 10 |
| 25.5 | 11.5 | 24 | 502386-09** | 9  |
| 25.5 | 11.5 | 24 | 502386-08** | 8  |
| 25.5 | 11.5 | 24 | 502386-07** | 7  |
| 25.5 | 11.5 | 24 | 502386-06** | 6  |
| 25.5 | 11.5 | 24 | 502386-05** | 5  |
| 25.5 | 11.5 | 24 | 502386-04** | 4  |
| 17.5 | 7.5  | 16 | 502386-03** | 3  |
| 17.5 | 7.5  | 16 | 502386-02** | 2  |

|   |              |  |       |                            |                    |   |                        |                     |                        |  |
|---|--------------|--|-------|----------------------------|--------------------|---|------------------------|---------------------|------------------------|--|
| REVISED<br>EC NO: J2013-0870<br>DRAWN: KAWASHIO 2013/02/07<br>CHKD: KASAKAWA 2013/02/13<br>APPR: YO ITO 2013/02/13                    | DESCRIPTION  | GENERAL TOLERANCES (UNLESS SPECIFIED)                |       | DIMENSION STYLE<br>MM ONLY |                    | SCALE<br>---                                      | DESIGN UNITS<br>METRIC |                     | THIRD ANGLE PROJECTION |  |
|   |              | 10 UNDER   | ±0.2  | DRAWN BY<br>T. MIYAZAKI    | DATE<br>2006/10/16 | TITLE<br>1.25 W/B CONN. SINGLE R/A REC. EMBTP PKG |                        |                     |                        |  |
|   |              | 10 OVER 30 UNDER                                     | ±0.25 | CHECKED BY<br>K. ASAKAWA   | DATE<br>2006/10/16 |   |                        |                     |                        |  |
|   |              | 30 OVER  | ±0.3  | APPROVED BY<br>YO. ITO     | DATE<br>2006/10/16 |   |                        |                     |                        |  |
| REV   | ANGULAR ±3 ° | DRAFT WHERE APPLICABLE MUST REMAIN WITHIN DIMENSIONS |       | MATERIAL NO.<br>SEE TABLE  |                    | DOCUMENT NO.<br>SD-502386-003                     |                        | SHEET NO.<br>1 OF 2 |                        |  |
| SIZE A3 THIS DRAWING CONTAINS INFORMATION THAT IS PROPRIETARY TO MOLEX INCORPORATED AND SHOULD NOT BE USED WITHOUT WRITTEN PERMISSION |              |  |       |                            |                    |   |                        |                     |                        |  |

| WITHOUT CAPTON TAPE           |                      |                 | WITH CAPTON TAPE              |                      |                               |                      |                               |                      |                               |                      |                               |                      |                 |
|-------------------------------|----------------------|-----------------|-------------------------------|----------------------|-------------------------------|----------------------|-------------------------------|----------------------|-------------------------------|----------------------|-------------------------------|----------------------|-----------------|
| HSG COLOR : ORANGE            |                      |                 | HSG COLOR : GREEN             |                      | HSG COLOR : BLUE              |                      | HSG COLOR : RED               |                      | HSG COLOR : BLACK             |                      | HSG COLOR : NATURAL           |                      |                 |
| 502386-**28                   | --//                 | 15              | --//                          | --//                 | --//                          | --//                 | --//                          | --//                 | --//                          | --//                 | --//                          | --//                 | 15              |
|                               | --//                 | 14              | --//                          | --//                 | --//                          | --//                 | --//                          | --//                 | --//                          | --//                 | --//                          | --//                 | 14              |
|                               | --//                 | 13              | --//                          | --//                 | --//                          | --//                 | --//                          | --//                 | --//                          | --//                 | --//                          | --//                 | 13              |
|                               | --//                 | 12              | --//                          | --//                 | --//                          | --//                 | --//                          | --//                 | --//                          | --//                 | --//                          | --//                 | 12              |
|                               | --//                 | 11              | --//                          | --//                 | --//                          | --//                 | --//                          | --//                 | --//                          | --//                 | --//                          | --//                 | 11              |
|                               | --//                 | 10              | --//                          | --//                 | --//                          | --//                 | --//                          | --//                 | --//                          | --//                 | --//                          | --//                 | 10              |
|                               | 502386-0948          | 9               | --//                          | --//                 | --//                          | --//                 | --//                          | --//                 | --//                          | --//                 | --//                          | --//                 | 9               |
|                               | --//                 | 8               | --//                          | --//                 | --//                          | --//                 | --//                          | --//                 | --//                          | --//                 | --//                          | --//                 | 8               |
|                               | --//                 | 7               | --//                          | --//                 | --//                          | --//                 | --//                          | --//                 | --//                          | --//                 | --//                          | --//                 | 7               |
|                               | --//                 | 6               | --//                          | --//                 | --//                          | --//                 | --//                          | --//                 | --//                          | --//                 | --//                          | --//                 | 6               |
| --//                          | 5                    | 502386-0736     | 502386-0636                   | 502386-0734          | 502386-0634                   | 502386-0732          | 502386-0632                   | 502386-0731          | 502386-0631                   | 502386-0731          | 502386-0631                   | 502386-0772          | 7               |
| --//                          | 4                    | 502386-0536     | 502386-0436                   | 502386-0534          | 502386-0434                   | 502386-0532          | 502386-0432                   | 502386-0531          | 502386-0431                   | 502386-0531          | 502386-0431                   | 502386-0572          | 5               |
| --//                          | 3                    | 502386-0436     | 502386-0336                   | 502386-0434          | 502386-0334                   | 502386-0432          | 502386-0332                   | 502386-0431          | 502386-0331                   | 502386-0431          | 502386-0331                   | 502386-0472          | 4               |
| --//                          | 2                    | 502386-0336     | 502386-0236                   | 502386-0334          | 502386-0234                   | 502386-0332          | 502386-0232                   | 502386-0331          | 502386-0231                   | 502386-0331          | 502386-0231                   | 502386-0372          | 3               |
| --//                          | 2                    | 502386-0236     | 502386-0136                   | 502386-0234          | 502386-0134                   | 502386-0232          | 502386-0132                   | 502386-0231          | 502386-0131                   | 502386-0231          | 502386-0131                   | 502386-0272          | 2               |
| コネクタ シリーズ<br>CONNECTOR SERIES | 製品番号<br>MATERIAL NO. | 極数<br>(KT. NO.) | コネクタ シリーズ<br>CONNECTOR SERIES | 製品番号<br>MATERIAL NO. | コネクタ シリーズ<br>CONNECTOR SERIES | 製品番号<br>MATERIAL NO. | コネクタ シリーズ<br>CONNECTOR SERIES | 製品番号<br>MATERIAL NO. | コネクタ シリーズ<br>CONNECTOR SERIES | 製品番号<br>MATERIAL NO. | コネクタ シリーズ<br>CONNECTOR SERIES | 製品番号<br>MATERIAL NO. | 極数<br>(KT. NO.) |

| WITHOUT CAPTON TAPE |                               |                      |                               |                      |                               |                      |                               |                      |                               |                      |                               |                      |                 |  |                     |  |  |
|---------------------|-------------------------------|----------------------|-------------------------------|----------------------|-------------------------------|----------------------|-------------------------------|----------------------|-------------------------------|----------------------|-------------------------------|----------------------|-----------------|--|---------------------|--|--|
| HSG COLOR : GREEN   |                               |                      | HSG COLOR : BLUE              |                      |                               | HSG COLOR : YELLOW   |                               |                      | HSG COLOR : RED               |                      |                               | HSG COLOR : BLACK    |                 |  | HSG COLOR : NATURAL |  |  |
| 502386-**26         | 502386-1546                   | 502386-1544          | --//                          | 502386-1542          | 502386-1541                   | 502386-1570          | 15                            |                      |                               |                      |                               |                      |                 |  |                     |  |  |
|                     | 502386-1446                   | 502386-1444          | --//                          | 502386-1442          | 502386-1441                   | 502386-1470          | 14                            |                      |                               |                      |                               |                      |                 |  |                     |  |  |
|                     | 502386-1346                   | 502386-1344          | --//                          | 502386-1342          | 502386-1341                   | 502386-1370          | 13                            |                      |                               |                      |                               |                      |                 |  |                     |  |  |
|                     | 502386-1246                   | 502386-1244          | --//                          | 502386-1242          | 502386-1241                   | 502386-1270          | 12                            |                      |                               |                      |                               |                      |                 |  |                     |  |  |
|                     | 502386-1146                   | 502386-1144          | --//                          | 502386-1142          | 502386-1141                   | 502386-1170          | 11                            |                      |                               |                      |                               |                      |                 |  |                     |  |  |
|                     | 502386-1046                   | 502386-1044          | --//                          | 502386-1042          | 502386-1041                   | 502386-1070          | 10                            |                      |                               |                      |                               |                      |                 |  |                     |  |  |
|                     | 502386-0946                   | 502386-0944          | 502386-0943                   | 502386-0942          | 502386-0941                   | 502386-0970          | 9                             |                      |                               |                      |                               |                      |                 |  |                     |  |  |
|                     | 502386-0846                   | 502386-0844          | --//                          | 502386-0842          | 502386-0841                   | 502386-0870          | 8                             |                      |                               |                      |                               |                      |                 |  |                     |  |  |
|                     | 502386-0746                   | 502386-0744          | --//                          | 502386-0742          | 502386-0741                   | 502386-0770          | 7                             |                      |                               |                      |                               |                      |                 |  |                     |  |  |
|                     | 502386-0646                   | 502386-0644          | --//                          | 502386-0642          | 502386-0641                   | 502386-0670          | 6                             |                      |                               |                      |                               |                      |                 |  |                     |  |  |
|                     | 502386-0546                   | 502386-0544          | --//                          | 502386-0542          | 502386-0541                   | 502386-0570          | 5                             |                      |                               |                      |                               |                      |                 |  |                     |  |  |
|                     | 502386-0446                   | 502386-0444          | --//                          | 502386-0442          | 502386-0441                   | 502386-0470          | 4                             |                      |                               |                      |                               |                      |                 |  |                     |  |  |
|                     | 502386-0346                   | 502386-0344          | --//                          | 502386-0342          | 502386-0341                   | 502386-0370          | 3                             |                      |                               |                      |                               |                      |                 |  |                     |  |  |
|                     | 502386-0246                   | 502386-0244          | --//                          | 502386-0242          | 502386-0241                   | 502386-0270          | 2                             |                      |                               |                      |                               |                      |                 |  |                     |  |  |
|                     | コネクタ シリーズ<br>CONNECTOR SERIES | 製品番号<br>MATERIAL NO. | コネクタ シリーズ<br>CONNECTOR SERIES | 製品番号<br>MATERIAL NO. | コネクタ シリーズ<br>CONNECTOR SERIES | 製品番号<br>MATERIAL NO. | コネクタ シリーズ<br>CONNECTOR SERIES | 製品番号<br>MATERIAL NO. | コネクタ シリーズ<br>CONNECTOR SERIES | 製品番号<br>MATERIAL NO. | コネクタ シリーズ<br>CONNECTOR SERIES | 製品番号<br>MATERIAL NO. | 極数<br>(KT. NO.) |  |                     |  |  |

|  |                                       |   |                            |                    |   |                        |                        |
|--|---------------------------------------|---|----------------------------|--------------------|---|------------------------|------------------------|
| REVISED<br>EC NO. J2013-0870<br>DRWN:KAWASHIO 2013/02/07<br>CHKD:KASAKAWA 2013/02/13<br>APPR:Y0 ITO 2013/02/13 | GENERAL TOLERANCES (UNLESS SPECIFIED) |   | DIMENSION STYLE<br>MM ONLY |                    | SCALE<br>---  | DESIGN UNITS<br>METRIC | THIRD ANGLE PROJECTION |
|  | 10 UNDER                              | ±0.2  | DRAWN BY<br>T. MIYAZAKI    | DATE<br>2006/10/16 | TITLE<br>1.25 W/B CONN. SINGLE R/A REC. EMBTP PKG                                     |                        |                        |
|  | 10 OVER 30 UNDER                      | ±0.25   | CHECKED BY<br>K. ASAKAWA   | DATE<br>2006/10/16 |  |                        |                        |
|  | 30 OVER                               | ±0.3  | APPROVED BY<br>Y0. ITO     | DATE<br>2006/10/16 |   |                        |                        |
|  | ANGULAR ±3 °                          |   | MATERIAL NO.<br>SEE TABLE  |                    | DOCUMENT NO.<br>SD-502386-003   |                        | SHEET NO.<br>2 OF 2    |
| DRAFT WHERE APPLICABLE MUST REMAIN WITHIN DIMENSIONS   |                                       | THIS DRAWING CONTAINS INFORMATION THAT IS PROPRIETARY TO MOLEX INCORPORATED AND SHOULD NOT BE USED WITHOUT WRITTEN PERMISSION |                            |                    |   |                        |                        |