

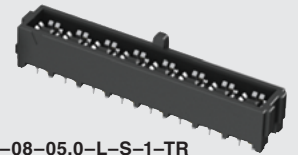
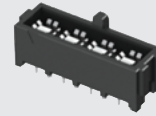
(4.00 mm) .1575"

IJ5-04-05.0-L-S-1-TR

IJ5-01-05.0-L-S-1-TR



IJ5-04-05.0-L-D-1-TR



IJ5-08-05.0-L-S-1-TR

IJ5 SERIES

50Ω HIGH ISOLATION RF JACKS

SPECIFICATIONS

For complete specifications and recommended PCB layouts see www.samtec.com?IJ5

Shell Material:

Copper Alloy

Insulator Material:

Black LCP

Contact Material:

Copper Alloy

Dielectric Material:

Black LCP

Plating:

Au or Sn over
50μ" (1.27 μm) Ni

Current Rating (Vertical):

Signals: 2.36 A per pin

(2 adjacent pins powered)

Grounds: 4.4 A per pin

(2 adjacent pins powered)

Operating Temp Range:

-55°C to +125°C

Insulation Resistance:

>35,000 MΩ

Contact Resistance:

Center: <34 mΩ

Outer: <7 mΩ

Dielectric Withstanding Voltage:

600 VAC

Working Voltage:

200 VAC

RoHS Compliant: Yes

Processing:

Lead-Free Solderable:

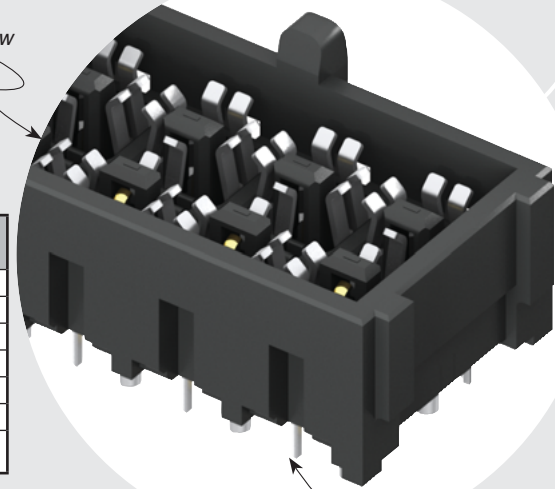
Yes

Mates with:

IP5

IP5/IJ5 10 mm Stack Height	Frequency
Insertion Loss = 3 dB	10.5 GHz / 21.0 Gbps
Return Loss = 15 dB	5.5 GHz / 11.0 Gbps
VSWR = 1.4	5.4 GHz / 10.8 Gbps
Isolation = 60 dB	8.8 GHz / 17.6 Gbps
Isolation = 70 dB	7.6 GHz / 15.2 Gbps
Isolation = 80 dB	1.3 GHz / 2.6 Gbps

Complete test data available at www.samtec.com?IJ5 or contact sig@samtec.com

Single or
Double Row1, 2, 4, 6 or 8
Positions

IJ5

JACKS
PER ROW

05.0

PLATING

ROW
OPTION

TAIL

TR

-01, -02, -04, -06, -08

-L
= 10μ" (0.25 μm)
Gold on
contact area,
Matte Tin on tail

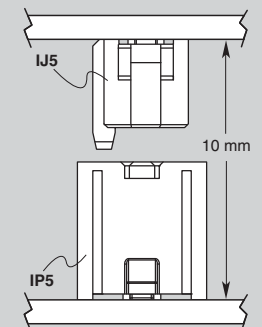
-S
= Single
Row

-D
= Double
Row
(Not available
with -01)

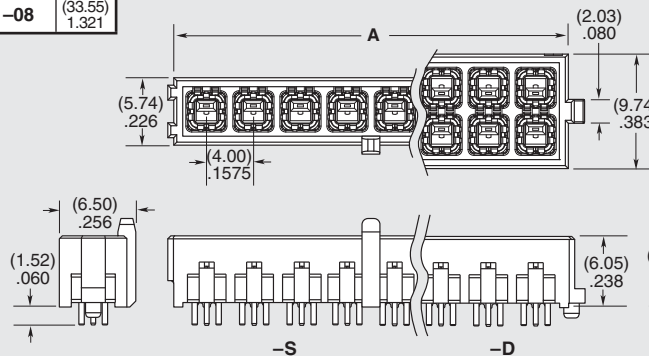
-1
= (1.60 mm)
.062"
board
thickness

-TR
= Tape &
Reel

APPLICATION



NO. OF JACKS	A
-01	(5.55) .219
-02	(9.55) .376
-04	(17.55) .691
-06	(25.55) 1.006
-08	(33.55) 1.321



RECOGNITIONS

For complete scope of recognitions see www.samtec.com/quality



FILE NO. E111594

ALSO AVAILABLE (MOQ Required)

- Other stack heights
 - Other PCB thicknesses
- Contact Samtec.

OTHER SOLUTIONS

- 75Ω Board-to-Board system (see IJ7 & IP7 Series)
- Cable assembly (see IJ5C Series)