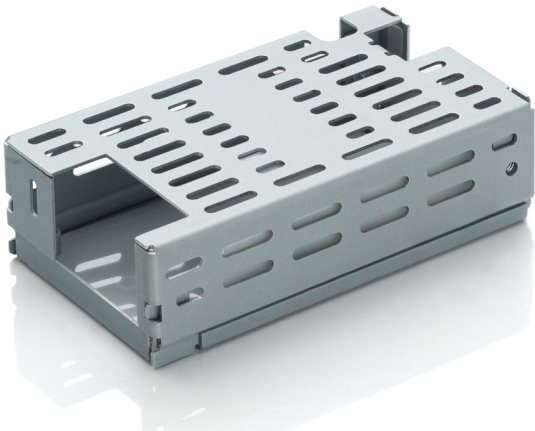


LFWLP225-CK COVER KIT



Features

- Noncorrosive
- Easy assembly
- Low weight
- Fully safe

FOR WLP225, MWLP225 SERIES

Derating Guidelines

WLP225/MWLP225: Ambient > 50°C, derate by 50% to 70°C. 13 CFM FAN recommended to circulate air

Contents

Mounting Base, Cover, Insulator, Fixing Screws

Mechanical Dimensions

Cover and Base Material EG (Zintec) / CRC (Powder coating/Passivation), 1.0 mm

Marked A: PCB MTG; B: COVER MTG; C: SYSTEM MTG

All dimensions are in mm. General tolerance : +/-0.5

Mechanical Drawing

