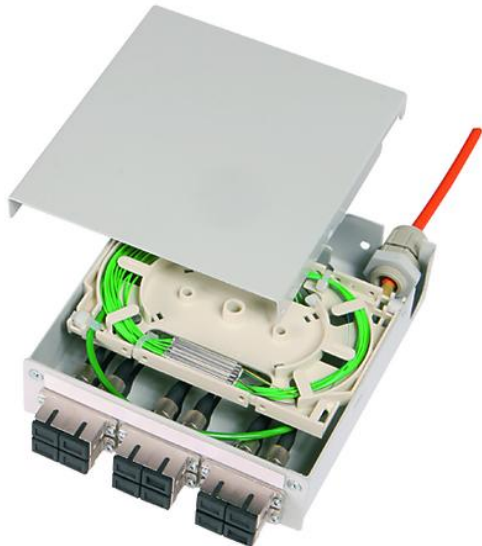


order number: H82050F0005

STX Mounting Rail Distributors with 6xLC Duplex, Multimode, splice cassette, Pigtails OM2; 12x G50/125 OM2, LC (coloured and stripped for splicing)



Technical Attributes	
Description	STX Mounting Rail Distributors with 6xLC Duplex, splice cassette, Pigtails, cable strain relief
Fiber Pigtails	12x G50/125 OM2, LC
Remarks	coloured, stripped for splicing

Product description

The STX Mounting Rail Distributors are available for either loose-tube, mini-breakout or breakout cables of up to 12 fibers using splice techniques or for fiber optic adaptors using pre-assembled fiber optic links. Fiber optic adaptor types including ST, SC Duplex, SC-RJ, LC Duplex, E2000 and E2000 Compact can be installed in the interchangeable front panel. The installer can flexibly feed the cables from three directions while easily maintaining minimum bending radii using a storage reserve with additional cable retainers. Versions with pre-assembled adaptors are already available for mini-breakout and breakout cables. For loose-tube cables, the distributors are supplied with ready-to-splice, coloured pigtailed and cable strain relief.

For generic cabling in control cabinets, Telegärtner offers outlets and distributors which can be mounted directly next to one another on the mounting rail. They form the ideal connection between the arriving installation lines and the wiring inside the control cabinet. The components can be quickly and easily mounted on conventional TH 35 rails by simply clicking them in place.

Mechanical Characteristics	
Material: housing	sheet steel zinc plated, powder coated, light grey RAL 7035
Material: front plate	sheet steel zinc plated, powder coated, light grey RAL 7035
Material: top hat rail adaptor	Steel sheet nickel plated
Cable entry	cable gland M20 for 5-9 mm
Panel piercings	ST Duplex, SC Duplex, SC-RJ, LC Duplex, E2000 Compact
Dimensions in mm: Width	35
Dimensions in mm: Height	125
Dimensions in mm: Depth	140