

## Features

- Extremely durable
- Hi flow rate and reduced dimension
- Large range for different application
- Low energy consumption and high efficiency
- Reliable components
- Standard manual switch
- Easy maintenance
- Chemical nickel-plated aluminium spool and NBR seals

## RS PRO 01VS Solenoid Valves

RS Stock No.: 176-2114



RS PRO is the own brand of RS. The RS PRO Seal of Approval is your assurance of professional quality, a guarantee that every part is rigorously tested, inspected, and audited against demanding standards. Making RS PRO the Smart Choice for our customers.

## Product Description

RS PRO Solenoid Valves are robust and versatile, engineered to perform high flow rate with fast time and switching pressure. They are available in aluminium and design for pressure up to 10 bar, ATEX and UL certified.

### Applications:

- Pneumatic Automation, Robotics and Handling
- Automotive process
- Railway and transportation field
- Textile industry, Packing, Pharmaceutical
- Food Process
- Pneumatic control for Vacuum
- Special products for specific applications

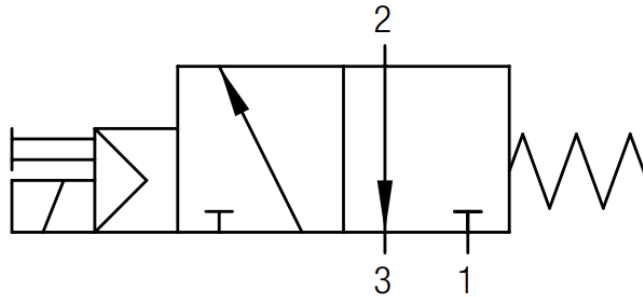
## General Specifications

Series	01VS
Supply Voltage	24V DC – 12V DC – 24V AC – 110V AC – 220V AC
Number of Ports	3/2
Connection Size	½"
Thread Standard	G
Operation	Monostable Spring Return
Default Valve Position	NC
Suitable Application	Compressed Air
Minimum Power	2W – 3VA
Manual Control	Bistable
Body material	Anodised aluminium
Maximum Working Pressure	10 bar
Operating Pressure Range	2 bar → 10 bar
Flow Rate	5000 NI/min
Connection Gender	Female
Maximum Operating Temperature	+60°C
Minimum Operating Temperature	-10°C

## Approvals

Declarations	MFR Declaration of Conformity
Standards Met	REACH – RoHS – PED 2014/68/UE

## Drawings and Other Specifications



**NC**

