

Features

- Precise
- Compact
- Double force
- Guided
- Non-rotating
- Double acting
- Magnetic

RS PRO Twin Rod Cylinder

RS Stock No.: 2351146



RS PRO is the own brand of RS. The RS PRO Seal of Approval is your assurance of professional quality, a guarantee that every part is rigorously tested, inspected, and audited against demanding standards. Making RS PRO the Smart Choice for our customers.

Product Description

Pneumatic Guided Cylinders

The twin rod cylinders are designed to be used in a large number of applications and offer precise movement and positioning. They offer double the output force using their double cylinders with high guiding accuracy and are suitable for use with magnetic switches. These are used when a high force is required.

- *Lifting, sliding, moving, pulling and pushing*
- *Packaging, handling, printing, semiconductor, automation, robotics and manufacturing industries*

General Specifications

| | |
|----------------------------|------------------------------------|
| Stroke | 10mm |
| Bore | 10mm |
| Manufacturer Series | EXS |
| Action | D/A |
| Bearing Type | Slide bearing |
| Pneumatic Connector | M4 x 0.7 |
| Maximum Operating Pressure | 10 bar |
| Cushioning Type | Rubber adjustable on return stroke |

Mechanical Specifications

| | |
|-------------------------------|--------------------|
| Dimension | 82 x 46 x 17 |
| Weight | 160g |
| Maximum Operating Temperature | +80 |
| Length | 72mm |
| Body | Aluminium |
| Piston | Hard chromed steel |

Accessories

| Stock No. | Brand | Product Name | Attribute 1 | Attribute 2 | Attribute 3 |
|-----------|-------|--------------|-------------|-------------|-------------|
|-----------|-------|--------------|-------------|-------------|-------------|

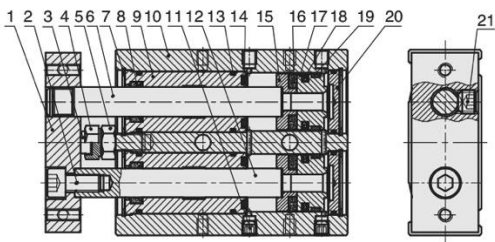
Pneumatic Guided Cylinders



| | | | | | |
|---------|--------|-----------------|--------|---------------|------------|
| 2351167 | RS PRO | Magnetic switch | 2-wire | 5-240 V DC/AC | 2 mtr lead |
|---------|--------|-----------------|--------|---------------|------------|

Specifications & Materials

Internal structure



EXS



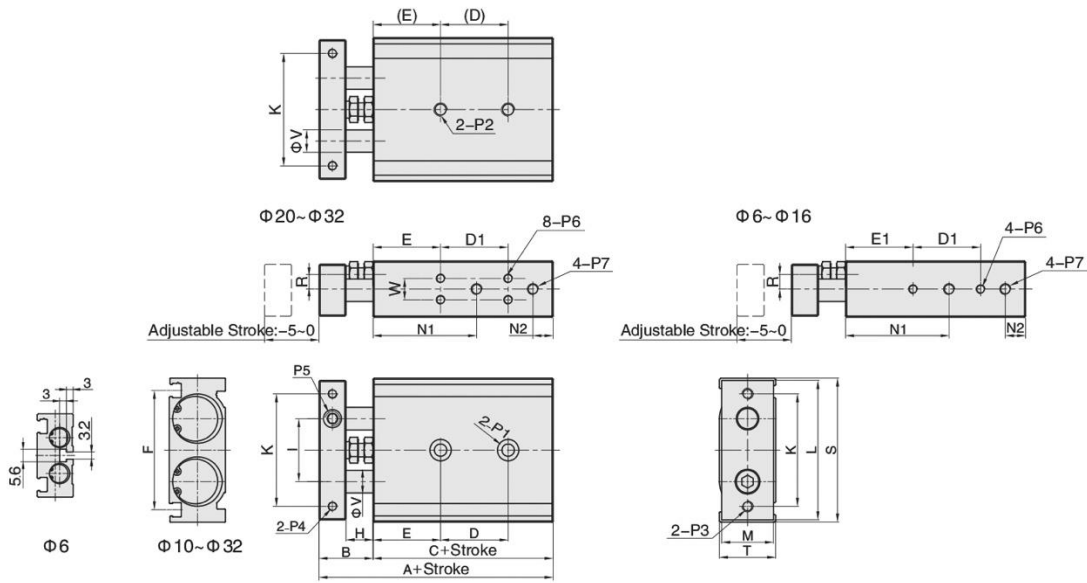
Specifications

| | | |
|---------------------------|---------------------|--|
| Acting type | | Double acting |
| Working Medium | | Clean air (40 μm filtration) |
| Working Pressure (MPa) | | 0.1~1.0 |
| Guaranteed Pressure (MPa) | | 1.5 |
| Working Temperature (°C) | | -20~80(Dry air) |
| Cushion type | | Both Ends Cushion |
| Structure | | Double Power |
| Lubrication | | Not required |
| Adjustable Cushion | | Return Stroke 0 – -5mm |
| Bearing | | Slide Bearing type / Linear Bearing type |
| No-rotating accuracy | Slide Bearing type | +0.15° |
| | Linear Bearing type | +0.1° |
| Port Size | | M5x0.8 |

| NO. | Part name | Material |
|-----|-------------------|-------------------------------|
| 1 | Fixing plate | Aluminum alloy |
| 2 | Nut | Carbon steel |
| 3 | Bumper | POM |
| 4 | Adjustable nut | Carbon steel |
| 5 | Screw | Carbon steel |
| 6 | Piston rod | S45C hard chrome carbon steel |
| 7 | C clip | Spring steel |
| 8 | Wiper seal | NBR |
| 9 | Head cover | Aluminum alloy |
| 10 | Body | Aluminum alloy |
| 11 | Hex fix screw | Cu |
| 12 | Piston rod | S45C hard chrome carbon steel |
| 13 | O-ring | NBR |
| 14 | Anti-bump cushion | TPU |
| 15 | Magnet holder | Aluminum alloy |
| 16 | Magnet | Plastic |
| 17 | Piston | Aluminum alloy |
| 18 | Piston seal | NBR |
| 19 | Wear ring | PTFE |
| 20 | Rear cover | Aluminum alloy |
| 21 | Hex fix screw | Cu |

Dimensions

Main Dimensions



| Bore\Sign | A | B | C | D D1 | | | | | | | E | E1 | F | H | I | K | L | M | N1 | N2 | R |
|-----------|----|----|----|-------|-------|-------|--------|-----|-----|-----|----|----|------|---|----|----|----|----|----|----|-----|
| | | | | 10~25 | 30~50 | 60~80 | 90~100 | 125 | 150 | 175 | | | | | | | | | | | |
| 10 | 72 | 17 | 55 | 30 | 40 | 50 | 60 | - | - | - | 20 | 20 | 36.5 | 9 | 20 | 35 | 44 | 15 | 30 | 8 | 3.5 |

| Bore\Sign | S | T | V | W | P1 | P2 | P3 | P4 | P5 | P6 | P7 |
|-----------|----|----|---|---|--------------------------------|-------------|--------|--------|--------|-------------|--------|
| 10 | 46 | 17 | 6 | - | Φ 6.5 Dp:3.3; Thru.hole: Φ 3.4 | M4X0.7 Dp:7 | M4X0.7 | M3X0.5 | M5X0.8 | M3X0.5 Dp:5 | M5X0.8 |