

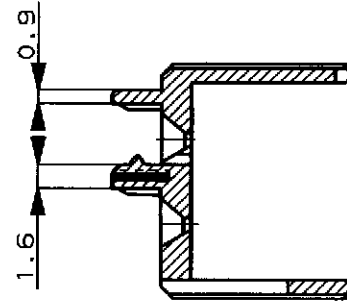
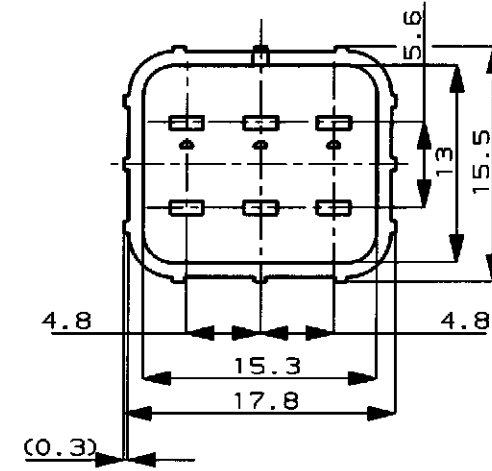
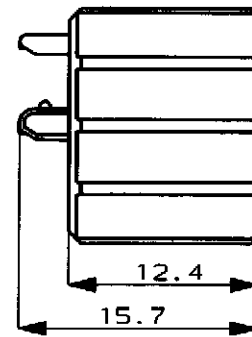
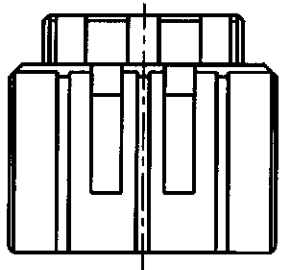
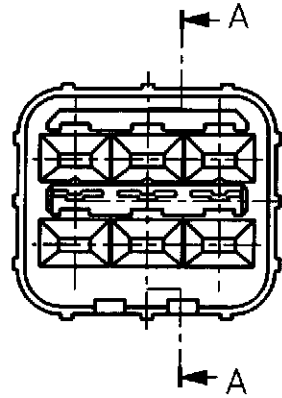
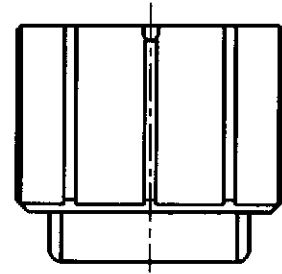
/auto2/new/u.d98-0026 u.customer/s.c-174265

NUMBER  
C-174265



METRIC

PRINT DIST  
DIMENSIONS IN MILLIMETERS. DO NOT SCALE PRINT



SECT  
断面 A-A

- 注：  
1. 本製品は、キャップハウジングP/N 174264  
に装着される
- NOTE：  
1. TO BE MATES WITH CAP HOUSING P/N 174264

PBT	(NATURAL) 自然色	1-174265-1
PBT, 難燃材	(YELLOW) 黄	174265-7
MATERIAL 材料	HOUSING COLOR ハウジング色	P/N

© 19 BY AMP (Japan) LTD. ALL RIGHTS RESERVED. AMP PRODUCTS COVERED BY PATENTS AND OR PATENTS PENDING				<b>AMP</b> AMP (JAPAN), LTD. Tokyo, Japan	
WIRE RANGE mm <sup>2</sup> (AWG)		INSULATION DIA mmφ		NAME 6P. ECONOSEAL J-MARK II <sup>+</sup> CONNECTOR 6極 エコノシール J マーク II <sup>+</sup> DOUBLE LOCK PLATE FOR CAP HOUSING キャップ用ダブルロックプレート	
B	REVISED	FJ00-0601-98	AY NB	3/11/89	MATERIAL SEE TABLE 表参照
A	ADDED	FJ00-3794-95	MT AT	12/12/95	COLOR SEE TABLE 表参照
O	作成	RELEASED J-9751	T.S.Y.M	5/26/89	DR. T. SAGAWA
LTR	REVISION RECORD	変更	CHK	DATE	DE. K. Oda
				CHK. M. Matsushita	APP. M. Nozuchi
				DR.	5/16/89
				APP.	5/31/89
				GENERAL TOLERANCE	SIZE LOC NUMBER
				0<W<10 : ±0.2 10<W<30 : ±0.25 30<W<100 : ±0.3 ANGLES : ±3°	A3 J C-174265
				SCALE	REV. SHEET
				2-1	B 1 OF 1

CUSTOMER DRAWING