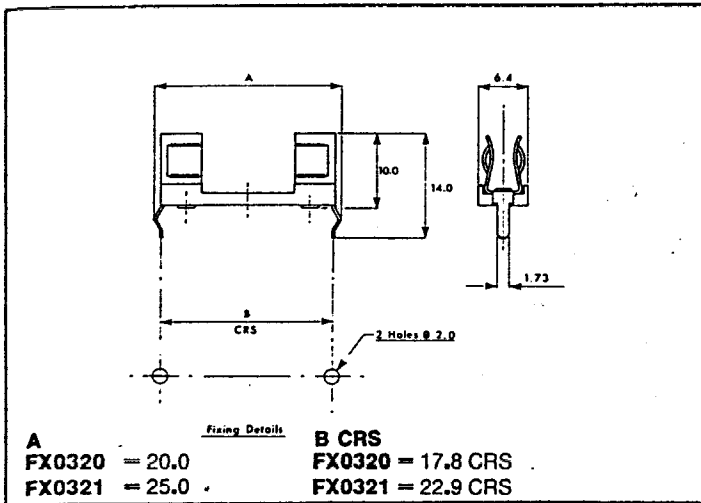


FUSEHOLDERS



Base & P.C. Mounting 5 x 20/4.7 x 16 Fuses

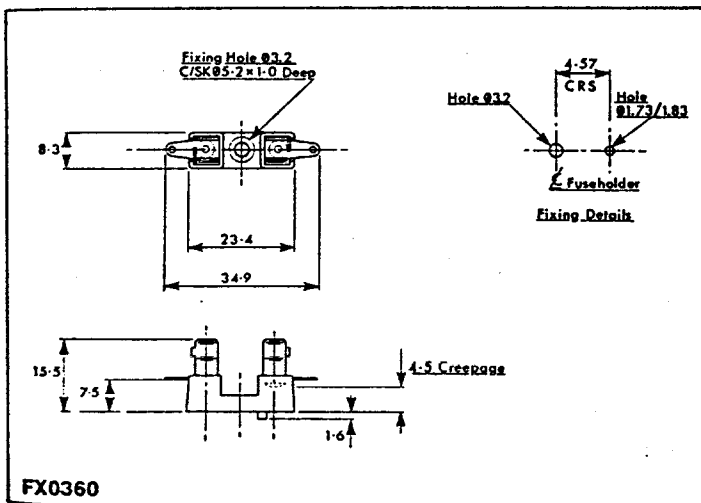


RS 417-098 = FX0321

FX0321 Moulded base. For 5 x 20 fuses
FX0320 Laminated base. For 4.7 x 16 fuses.
Max. Rating: FX0321 6.3A. FX0320 5.0A @ 250V.

Connection: P.C.B.
Insulation Resistance: > 10⁹ MΩ.
A.C. Breakdown: 7 KV pole to pole.
Insertion Resistance: > 10 m Ω

Materials:-
Moulding: FX0321 Glass filled Nylon. FX0320 S.R.B.P.
Contacts: Phosphor Bronze, Tin Plated.



FX0360 Moulded base. For 5 x 20 fuses.

Max. Rating: 6.3A. @ 250V.
Connection: Solder tags.
Insulation Resistance: > 10⁹ M Ω @ 500V. d.c.
A.C. Breakdown: 2kV @ 50Hz.
Insertion Resistance: > 10 m Ω

Materials:-
Moulding: Glass filled Nylon.
Contacts: Phosphor Bronze, Tin Plated.

