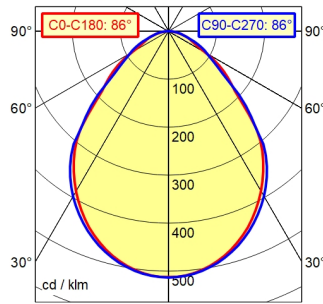
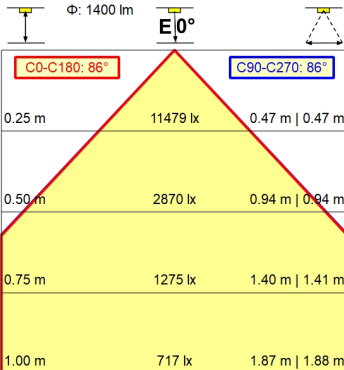
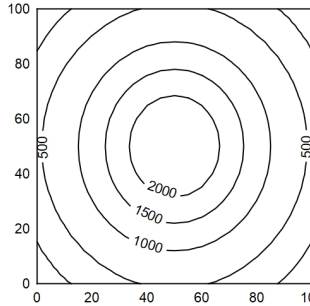


A50 | 100.0%       $\Phi$ : 1400 lm  
 UGR 4H 8H: 24.7 / 25.2  
 120° 150° 180° 150° 120°



100 x 100 cm       $\Phi$ : 1400 lm  
 Em: 1018 lx  
 Emax: 2435 lx  
 Emin: 227 lx  
 = 50 cm



**Light source**  
**Work equipment**  
**Connected load**  
**Secondary tension**  
**Power consumption**  
**Sec. power consumption**  
**Luminous flux**  
**Luminous efficiency**<sup>1)</sup>  
**Light type/-color**  
**Colour temperatur**  
**Color rendering index**  
**Light distribution**  
**Beam angle**  
**Chromaticity tolerance LED**  
**Glare control**  
**Luminance (L65)**  
**UGR class (4H 8H; EN 12464-1)**  
**System of protection/Class**  
**Technology**  
**Operation**  
**Housing**  
**Light source cover**  
**Arm**  
**Balance of articulation joints**  
**Mains lead**  
**Fastening**  
**EAN**  
**Weight without/incl. packaging**  
**Packaging dimensions**

LED  
 Electronic plug-in ballast  
 100 - 240 V; AC; 50 Hz; 60 Hz  
 24 V  
 ca. 18 W  
 ca. 15 W  
 approx. 1.400 lm  
 approx. 93 lm/W  
 Cold white  
 approx. 5.000 K  
 CRI  $\geq$  90; R9  $\geq$  50  
 Direct; Symmetric; approx. 100 %  
 86 °  
 < 3 SDCM  
 Diffuser  
 $\leq$  17.000 cd/m<sup>2</sup>  
 $\leq$  25  
 IP 20; II with plug-in power supply, III without plug-in power supply  
 Touch DIM  
 Multi-function switch  
 Untreated; Dusty grey  
 Structured; Plastic  
 Tubular aluminium section; Anodized; Aluminium coloured anodised  
 Spring  
 ca. 3,2 m; Mains plug; CEE 7/XVI; BS 1363 A; NEMA 1-15P  
 Tap16; Table clamp  
 4013330191818  
 ca. 1,6 kg  
 ca. 865 mm; 420 mm; 102 mm

<sup>1)</sup> For luminaires with separate control gear, the luminous efficacy refers to the luminaire head without control gear

# Arm-mounted luminaire ALD ALD 1300/950/D

113686000-00815669

