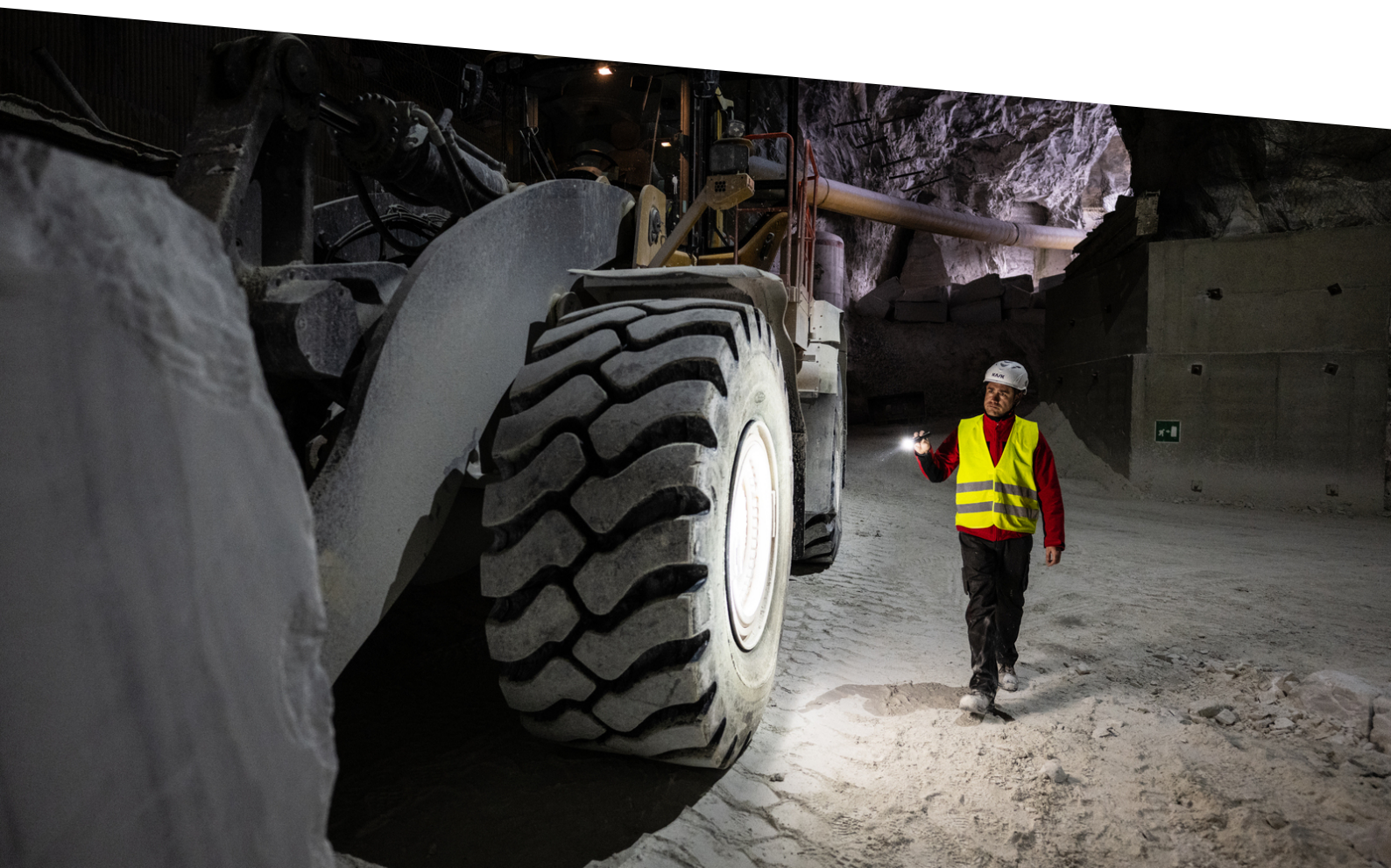




# — PRODUCT DATA SHEET

## **P7R PRO**



# P7R PRO



## PRODUCT DESCRIPTION

Tunnels, wind turbines and big construction sites. If these are your worksites then the P7R PRO is the ideal light choice. The torch powerfully illuminates both big areas and smaller projects up close. You can easily switch between different light functions, the USB-C charging port and transport lock via Mode Select Ring. Ledlenser P7R PRO - powerful illumination right by your side. Backed by a 7-year with registration warranty for complete peace of mind.

- Brilliant light quality, Spot/Flood focusing function (Advanced Focus System) and natural white light with high CRI to help against eye fatigue
- Intuitive control: Mode Select Ring for quick access to different light modes, transport lock and charging port
- Extremely robust: High water and dust resistance (IP68), removable protective bumpers for added protection and backed by a 7-year warranty\*
- Sustainable: Uses 75% recycled aluminium<sup>9</sup>
- Rechargeable via USB-C, with additional charging station

### TECHNICAL DATA

Weight incl. batteries [g]	223
Material	Aluminum alloy
Length [mm]	170
Length (focused) [mm]	176
Tube diameter [mm]	27
Head diameter [mm]	42

### POWER SUPPLY

Battery quantity	1
Rechargeable	Yes
Battery type	Lithium-ion
Total battery voltage [V]	3.6
Total battery capacity [mAh]	4600
Total battery energy [Wh]	16.56 Wh
Battery replaceable	Yes
Charging time [min]	180
Energy status indicator	Battery Indicator, Charge Indicator, Low Battery Warning

### FURTHER SPECIFICATIONS

IP class	IP68
Drop test (drop height) [m]	2
Working temperature range [°C]	-20 to +40

### LIGHT FUNCTIONS

Neutral White Main: Boost, Power, Mid power, Low power, SOS, Strobe, Position, Blink

### LIGHT SOURCE

	MAIN
Amount LEDs	1
Colour	Neutral White
Colour temperature [K]	4500 to 5500
Colour rendering index (CRI)	80

### LIGHT VALUES - Neutral White Main

	Boost	Power	Mid power	Low power
Light output [lm]	2000	1200	450	25
Beam distance [m]	320	240	150	35
Run time [h]	-	2.5	5	60

### SWITCH

Front Mode Select Ring

# P7R Pro

## FEATURES

Mode Select Ring, Transportation Lock

## TECHNOLOGIES

Advanced Focus System, Temperature Control System, Flex Sealing Technology, Natural Light, Multi-Core Optics

# P7R Pro

## PACKAGING AND LOGISTICS



For illustration purposes only

PACKAGING INFORMATION	
Type of packaging	Box
Supplied with	Charging Station Type D, Adjustable Lanyard, Charging Cable USB-C to USB-C, Pouch Type O, 21700 Li-ion rechargeable battery, Protective Elements Set Type D
Item No.	503103
Colour	Black
STERLING RRP inc / ex vat	£159.95 / £133.29
EURO RRP inc / ex vat	€TBC / €TBC
SINGLE PACKAGE	
Dimensions W x H x D [cm]	14.5 x 21 x 6.5
Gross weight [g]	515
GTIN-13	4058205037136
EXPORT CARTON	
Unit	12
Dimensions W x H x D [cm]	45.5 x 24.5 x 32
Gross weight [g]	6900
GTIN-13	4058205037112

# P7R Pro

## PRODUCT SERIES

Powerful torches for those who push boundaries—the discerning enthusiasts, the industrious workers, the bold adventurers and the forward-thinkers. Lights that bridge the gap between the epic and the technical. In your hand, they do more than shine—they guide your path, reveal the unknown and empower you to explore, discover and redefine what is possible. Pioneering Brilliance. The P-Series: Redefined.

# P7R Pro

---

## FOOTNOTES

The information pertaining to scope of delivery, appearance, performance, dimensions and weight corresponds to the information available at the time of publication. In the interest of product development, we reserve the right to change scope of delivery, appearance, design and color without prior notice. Product images may vary from the actual products and may show optional accessories which can be purchased separately. Errors and omissions excepted.

\*) 7 year warranty only if registered, otherwise 2 years. Warranty conditions viewable at <https://ledlenser.com/en/infos-service/warranty/>

1) Measured values according to ANSI/PLATO FL 1 in the respective setting named. If no setting is specifically named, the luminous flux (lumens/lm) and range (meters/m) values refer to the brightest setting and the burn time

(hours/h) values refer to the lowest setting. A boost function (if available) can be used several times, but is only available for a short time at a time. In case the lamp is equipped with colored LED(s), the measured values are given with white light or the white LED. If the lamp has different energy modes, the "energy saving mode" is the basis for the measurement.

2) Calculated value of the capacity in watt-hours (Wh). This applies to the battery(ies) contained in the delivery condition of the respective item or, in the case of lamps with rechargeable battery, to the battery(ies) contained herein in a fully charged condition.

9) All aluminium components are made of at least 75 % recycled aluminium and may thus vary in surface structure and color.