

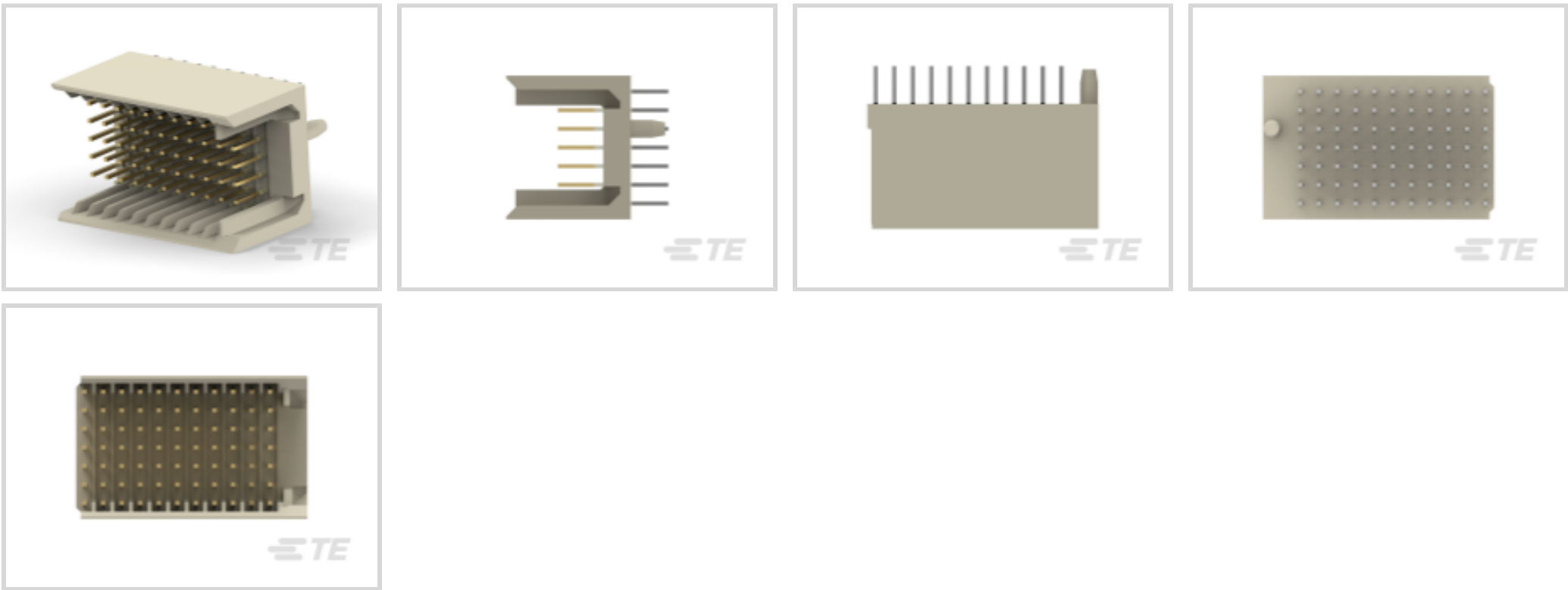
TE Internal #: 106081-1  
Hard Metric Backplane PCB Mount Header, ≤1 Gb/s, 11 Column, 7  
Row, Mezzanine, 77 Position, 2 mm [.078 in] Centerline, Vertical,  
Gray, Z-PACK 2mm HM

[View on TE.com >](#)



Connectors > PCB Connectors > Backplane Connectors > Hard Metric Backplane Connectors >

Hard Metric Male Connector: Traditional Backplane, Mezzanine, 2mm



PCB Connector Type: **PCB Mount Header**

Data Rate: **≤1 Gb/s**

Number of Columns: **11**

Number of Rows: **7**

Backplane Architecture: **Mezzanine**

[All Hard Metric Male Connector: Traditional Backplane, Mezzanine, 2mm \(124\)](#)

Features

Product Type Features

Connector & Contact Terminates To	Printed Circuit Board
Ground Feature Type	Ground Return Shielding
Backplane Interface Type	2mm HM
Connector System	Board-to-Board
PCB Connector Type	PCB Mount Header
Sealable	No

Configuration Features

Rows Loaded	A, B, C, D, E, F, Z
Number of Columns	11
Number of Rows	7
Backplane Architecture	Mezzanine
Number of Positions	77



PCB Mount Orientation	Vertical
Signal Characteristics	
Crosstalk Version	Standard
Data Rate	≤1 Gb/s
Body Features	
Primary Product Color	Gray
Contact Features	
Contact Underplating Material	Nickel
Contact Base Material	Phosphor Bronze
CompactPCI Designation	None
PCB Contact Termination Area Plating Material	Tin-Lead
Feedthrough Post Length	3.7 mm
Contact Type	Pin
Contact Mating Area Plating Material	Gold (Au)
Contact Mating Area Plating Material Thickness	.76 μm[30 μin]
Contact Current Rating (Max)	1.5 A
Termination Features	
Termination Method to PCB	Through Hole - Press-Fit
Mechanical Attachment	
Connector Mounting Type	Board Mount
Mating Alignment Type	Polarizing Peg
Front Mating Level	Level 1
Housing Features	
Housing Material	Polyester - GF
Centerline (Pitch)	2 mm[.078 in]
Dimensions	
Backplane Module Length	25 mm
Usage Conditions	
Operating Temperature Range	-55 – 125 °C[-67 – 257 °F]
Operation/Application	
Shielded	No



Circuit Application

Signal

Industry Standards

UL Flammability Rating	UL 94V-0
------------------------	----------

Packaging Features

Packaging Quantity	21
Packaging Method	Tube

Product Compliance

For compliance documentation, visit the product page on TE.com>

EU RoHS Directive 2011/65/EU	Not Compliant
EU ELV Directive 2000/53/EC	Compliant with Exemptions
China RoHS 2 Directive MIIT Order No 32, 2016	Restricted Materials Above Threshold
EU REACH Regulation (EC) No. 1907/2006	Current ECHA Candidate List: JAN 2025 (247) Candidate List Declared Against: JAN 2025 (247) SVHC > Threshold: Pb (13% in 4690948374) <b>Article Safe Usage Statements:</b> Do not eat, drink or smoke when using this product. Wash thoroughly after handling. Recycle if possible and dispose of the article by following all applicable governmental regulations relevant to your geographic location.
Halogen Content	Not Low Halogen - contains Br or Cl > 900 ppm.
Solder Process Capability	Not applicable for solder process capability

Product Compliance Disclaimer

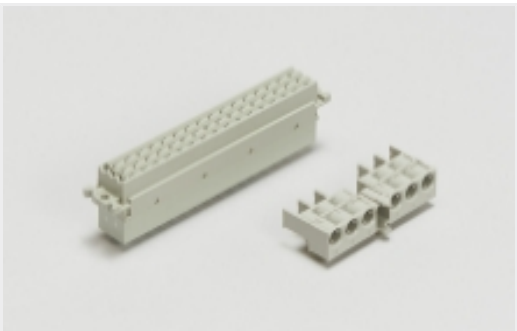
This information is provided based on reasonable inquiry of our suppliers and represents our current actual knowledge based on the information they provided. This information is subject to change. The part numbers that TE has identified as EU RoHS compliant have a maximum concentration of 0.1% by weight in homogenous materials for lead, hexavalent chromium, mercury, PBB, PBDE, DBP, BBP, DEHP, DIBP, and 0.01% for cadmium, or qualify for an exemption to these limits as defined in the Annexes of Directive 2011/65/EU (RoHS2). Finished electrical and electronic equipment products will be CE marked as required by Directive 2011/65/EU. Components may not be CE marked. Additionally, the part numbers that TE has identified as EU ELV compliant have a maximum concentration of 0.1% by weight in homogenous materials for lead, hexavalent chromium, and mercury, and 0.01% for cadmium, or qualify for an exemption to these limits as defined in the Annexes of Directive 2000/53/EC (ELV). Regarding the REACH Regulation, the information TE provides on SVHC in articles for this part number is based on the latest European Chemicals Agency (ECHA) 'Guidance on requirements for substances in articles' posted at this URL: <https://echa.europa.eu/guidance-documents/guidance-on-reach>

Compatible Parts

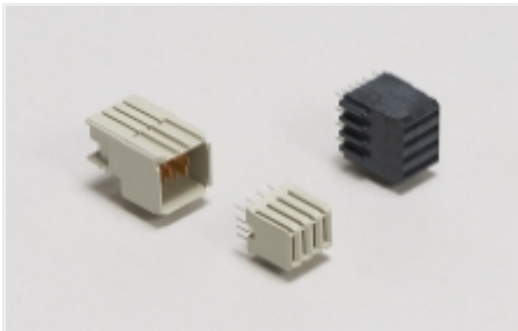


TE Part # 352115-1  
Z-PACK/C F-HDR 55P

Also in the Series | Z-PACK 2mm HM



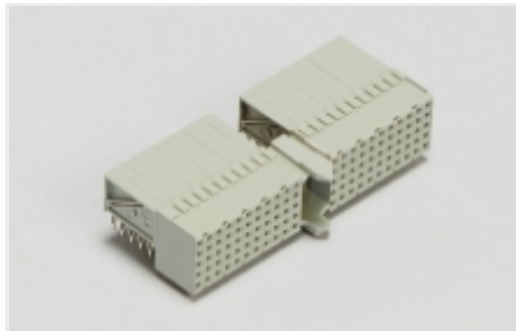
Backplane Connector Housings(4)



Backplane Power Connectors(1)



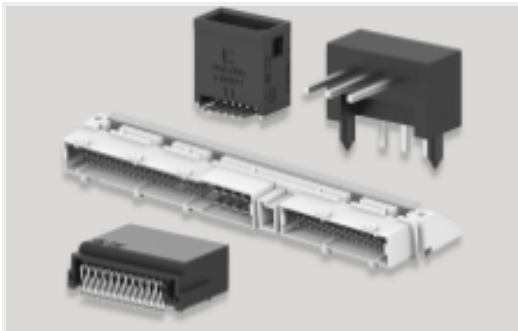
Connector Caps & Covers(62)



Hard Metric Backplane Connectors  
(266)



Insertion & Extraction Tools(2)

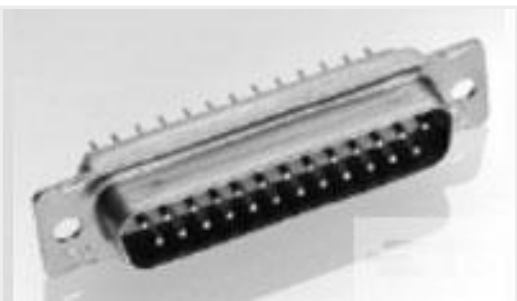


PCB Headers & Receptacles(46)



Rectangular Power Connectors(46)

Customers Also Bought



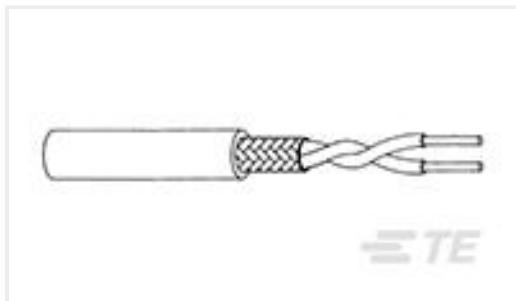
TE Part #204506-1  
RECEPT ASSY,62 POSN,AMPLIMITE



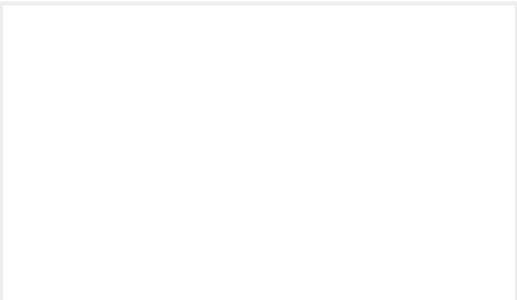
TE Part #2-1393240-3  
RT33K012



TE Part #316075-000  
55A1121-24-6/9-9



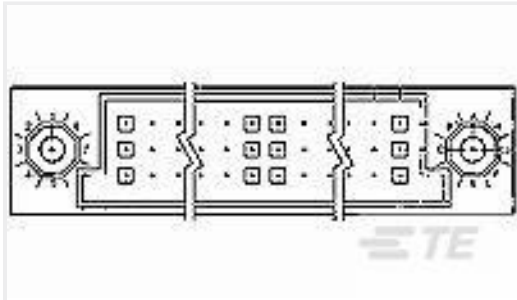
TE Part #234062-002  
2524E0114-9



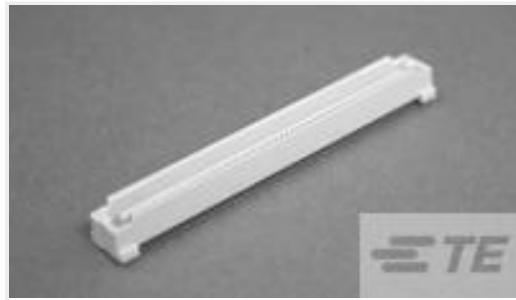
TE Part #213337-1  
DUST COVER,MIL 600



TE Part #675714-000  
SO96-3-00



TE Part #532433-1  
HDI PIN ASSY 3 ROW 75 POS



TE Part #5177986-8  
0.8FH,P05H.5,160,08/Sn,TR,SC



Documents

Product Drawings  
2MM HM, HEADER, TYPE C

English

CAD Files

3D PDF

3D

Customer View Model

ENG\_CVM\_CVM\_106081-1\_C.2d\_dxf.zip

English

Customer View Model

ENG\_CVM\_CVM\_106081-1\_C.3d\_igs.zip

English

Customer View Model

ENG\_CVM\_CVM\_106081-1\_C.3d\_stp.zip

English

By downloading the CAD file I accept and agree to the [Terms and Conditions](#) of use.

Product Specifications

Application Specification

English