

Features

- Trapezoidal tooth profile with metric pitches
- 5M HTD Pilot Bore
- To suit 9mm Wide Belt
- Aluminium/Steel
- Maintains precise speed ratios, reducing wear and extending belt life

RS PRO Timing Belt Pulleys

5M HTD Pilot Bore Pulleys – to suit 9mm Wide belt



RS PRO is the own brand of RS. The RS PRO Seal of Approval is your assurance of professional quality, a guarantee that every part is rigorously tested, inspected, and audited against demanding standards. Making RS PRO the Smart Choice for our customers.

Product Description

RS PRO 5M HTD Pilot Bore Pulleys are precision-engineered for synchronous belt drives, utilizing a 5 mm HTD tooth profile optimized for high-torque, low-noise operation. They provide accurate timing, zero slippage, and excellent power transmission—ideal for industrial automation, CNC, and Light to Medium Duty Applications.

Features

- High efficiency and low noise High load capacity with improved tooth contact and torque transmission.
- Quiet, efficient operation with reduced vibration.
- Metric 5 mm tooth pitch, perfectly matched to 9 mm HTD belts.
- Pilot bore design allows custom machining to fit specific shaft dimensions.
- Tooth profiles interchangeable with ISO/DIN standards.

Applications

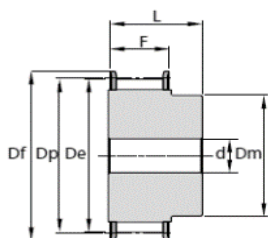
- Industrial machinery – conveyors, packaging, compressors.
- Robotics & CNC equipment – precision synchronization.
- Printers & textile machines – reliable, low-backlash motion.
- Light to Medium Duty drives – in conjunction with keyways or bushes, suitable for high-torque use.

Specifications

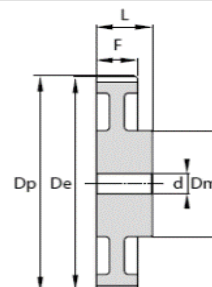
Series	5M HTD Pilot Bore Pulleys – to suit 9mm Wide belt
Number of Teeth	Please see below table for details
Pitch	5mm
To suit belt width	9mm
Belt Pulley Type	Timing Belt Pulleys
Bore type	Pilot Bore
Bore	Please see below table for details (d)
Overall Diameter	Please see below table for details (Df)
Number Of Grooves	Not applicable
Materials	Please see below table for details
Flanges	Please see below table for details

Specifications

Pilot Bore



TYPE 1F



TYPE 3



Key to Standard Diagram

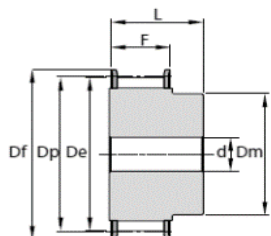
De	External diameter of teeth
Dp	Pitch diameter
Df	Flange diameter
Dm	Hub diameter
F	Width over flanges
L	Overall width (or length through bore)
d	Bore diameter
Material	Steel

*Dimensions below in mm

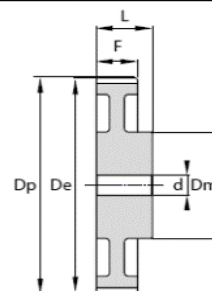
Bore (d) H8 Limits
Dimensional Tolerances +/- 1mm

RS Article	MPN	Number of Teeth	Type	Dp	De	Df	Dm	F	L	Bore (d)	No. Flanges
182717	HP12-5M-09F	12	1F	19.10	17.96	23	13	14.5	20	4	2
182723	HP14-5M-09F	14	1F	22.28	21.14	25	13	14.5	20	6	2
182587	HP15-5M-09F	15	1F	23.87	22.73	28	16	14.5	20	6	2
182773	HP16-5M-09F	16	1F	25.46	24.32	28	16.5	14.5	20	6	2
182767	HP18-5M-09F	18	1F	28.65	27.51	32	20	14.5	20	6	2
182600	HP20-5M-09F	20	1F	31.83	30.69	36	23	14.5	22.5	6	2
182571	HP22-5M-09F	22	1F	35.01	33.87	39	25.5	14.5	22.5	6	2
182616	HP24-5M-09F	24	1F	38.20	37.06	42	27	14.5	22.5	6	2
182593	HP26-5M-09F	26	1F	41.37	40.24	44	30	14.5	22.5	6	2
183388	HP28-5M-09F	28	1F	44.56	43.42	48	30.5	14.5	22.5	6	2
183350	HP30-5M-09F	30	1F	47.75	46.60	51	35	14.5	22.5	6	2
183338	HP32-5M-09F	32	1F	50.93	49.79	54	38	14.5	22.5	8	2
183344	HP36-5M-09F	36	1F	57.30	56.16	60	38	14.5	22.5	8	2
183366	HP40-5M-09F	40	1F	63.66	62.52	71	38	14.5	22.5	8	2

Pilot Bore



TYPE 1F



TYPE 3



Key to Standard Diagram

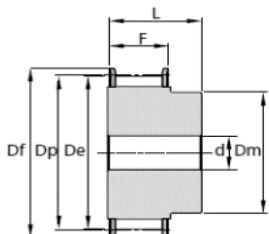
De	External diameter of teeth
Dp	Pitch diameter
Df	Flange diameter
Dm	Hub diameter
F	Width over flanges
L	Overall width (or length through bore)
d	Bore diameter
Material	Steel / Aluminium

*Dimensions below in mm

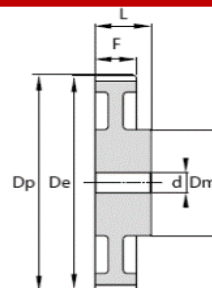
Bore (d) H8 Limits
Dimensional Tolerances +/- 1mm

RS Article	MPN	Number of Teeth	Type	Dp	De	Df	Dm	F	L	Bore (d)	No. Flanges
183366	HP40-5M-09F	40	1F	63.66	62.52	71	38	14.5	22.5	8	2

Pilot Bore



TYPE 1F



TYPE 3



Key to Standard Diagram

De	External diameter of teeth
Dp	Pitch diameter
Df	Flange diameter
Dm	Hub diameter
F	Width over flanges
L	Overall width (or length through bore)
d	Bore diameter
Material	Aluminium

*Dimensions below in mm

Bore (d) H8 Limits
Dimensional Tolerances +/- 1mm

RS Article	MPN	Number of Teeth	Type	Dp	De	Df	Dm	F	L	Bore (d)	No. Flanges
184820	HP44-5M-09	44	3	70.03	68.89	-	38	14.5	25.5	8	-
184527	HP48-5M-09	48	3	76.39	75.25	-	45	14.5	25.5	8	-
184836	HP60-5M-09	68	3	95.49	94.35	-	45	14.5	25.5	8	-
184533	HP72-5M-09	72	3	114.59	113.45	-	45	14.5	25.5	8	-