



## Instruction Leaflet

# Magnetically Coupled Pump

RS stock no. 266-597

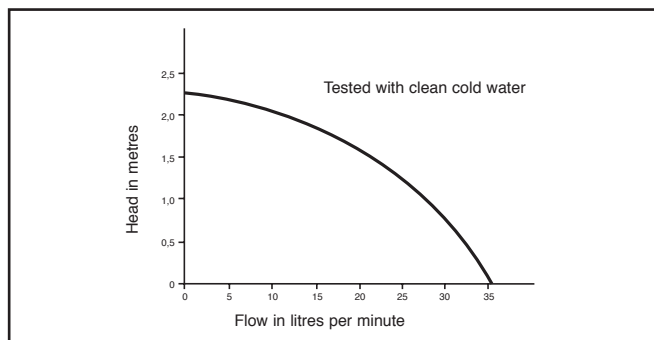
### Description

This centrifugal pump is fully encapsulated, magnetically coupled and rated for continuous duty. The pump is ideally suited to recirculation applications and can be used with mild acids or alkalis, since the only components in contact with the pumped fluid are plastic and ceramic with a viton 'O' ring (see Chemical Compatibility).

### Installation

Pump should be connected to pipework etc. using suitable fittings such as jubilee clips. Flexible hoses with internal diameters of 19mm may be used. (Avoid over-tightening as this may cause damage to the ports). The pump and pipework should be adequately supported and correctly fitted to avoid shock loading and strain on the pump and its ports. Do not mount pump vertically down (i.e. with ports below motor).

### Performance



### Operation and maintenance

Pump should have flooded suction since it does not self prime. Filters or restrictions should not be situated before the pump inlet. When priming, operate pump in short 10 seconds cycles to facilitate clearing the air. Ensure there are no leaks or blockages in pipework.

Do not operate pump against closed valve for longer than 30 seconds.

Where pumped fluid causes coating or deposition, periodic cleaning of pump internals may be necessary. This can be achieved by flushing through with an appropriate solvent or cleaning agent. Pump must be adequately ventilated to avoid overheating of motor.

Do not run pump dry.

### Motor specification

Single phase 240V 50Hz

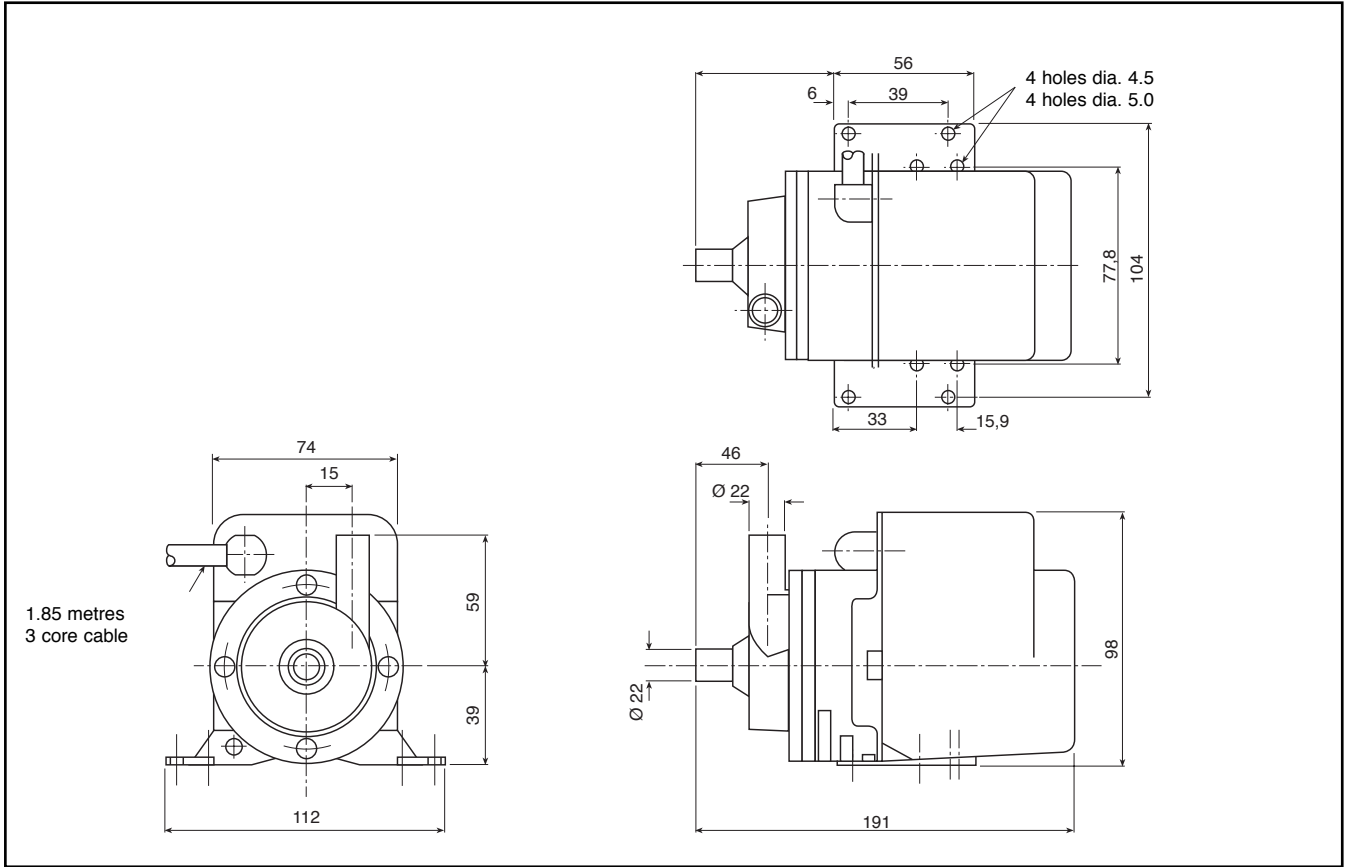
Input power 84W

Output power 18W

Maximum current 0.7A

### Chemical compatibility

Aluminium chloride (10%)  
 Ammonium sulphate (50%)  
 Aniline  
 Antimony trichloride (10%)  
 Arsenic acid  
 Barium chloride  
 Boric acid  
 Calcium chloride  
 Castor oil  
 Chromic acid  
 Citric acid (10%)  
 Cod liver oil  
 Copper sulphate  
 Cresols  
 Diesel oil  
 Diethylene glycol  
 Ferric chloride  
 Formaldehyde (40%)  
 Freon - 113  
 Furfural  
 Glycerol  
 Hexane  
 Hydrochloric acid (10%)  
 Hydrochloric acid (36%)  
 Hydrogen peroxide (35%)  
 Hydrogen sulphide gas  
 Iso-propanol  
 Lactic Acid (90%)  
 Linseed Oil  
 lubricating oil  
 Magnesium Chloride  
 Mercuric Chloride  
 Molasses  
 Nickel Chloride  
 Oleic Acid  
 Olive Oil  
 Paraffin Oil  
 Petrol  
 Potassium Cyanide  
 Potassium Permanganate (25%)  
 Potassium Sulphate  
 Rapeseed Oil  
 Silicone fluids  
 Silver Nitrate  
 Sodium Carbonate (10%)  
 Sodium Chloride (25%)  
 Sodium Cyanide  
 Sodium Nitrate  
 Stannic Chloride  
 Sulphur Dioxide  
 Tetrachloroethane  
 Tricesyl Phosphate  
 Water (distilled)  
 Water (sea)  
 White Spirit  
 Wine  
 Zinc Chloride (Ag. sol)



The information provided in RS technical literature is believed to be accurate and reliable; however, RS Components assumes no responsibility for inaccuracies or omissions, or for the use of this information, and all use of such information shall be entirely at the user's own risk. No responsibility is assumed by RS Components for any infringements of patents or other rights of third parties which may result from its use. Specifications shown in RS Components technical literature are subject to change without notice.