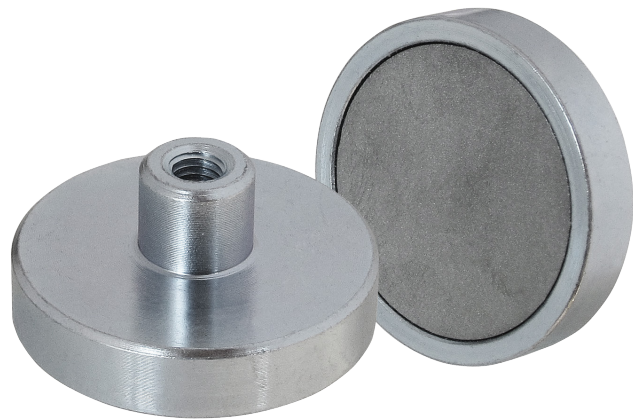


Datasheet - Neodymium NdFeB 42SH Shallow Pots with Threaded Hole



At A Glance

- ✓ Max. recommended operation temperature 150°C
- ✓ With female threaded hole for component mounting
- ✓ Strongest magnetic performance
- ✓ Up to 35kg pull force
- ✓ Zinc Plated Mild Steel Body



Neodymium Shallow Pot Magnets with Threaded Hole are high-strength permanent magnet N42SH magnetic assemblies. Designed for secure magnetic holding and versatile mounting in industrial, workshop, retail, and domestic applications. These magnets combine a powerful neodymium-iron-boron (NdFeB 42SH) magnet core with a shallow steel pot housing with threaded hole, concentrating the magnetic field at the contact surface to deliver strong, dependable holding force in a compact, low-profile design for applications up to 150°C.

The threaded hole in the boss of the pot allows for easy and secure attachment using screws or bolts, making these magnets ideal for integration into fixtures,

panels, frames, and engineered assemblies where reliable magnetic performance and mechanical fixing are both required. The shallow pot format ensures efficient magnetic attraction while minimising overall thickness, supporting installations in space-restricted or flush-mounted environments.

The 150°C maximum recommended operating temperature rated N42SH Neodymium magnet material provides exceptional magnetic strength relative to its size, enabling these shallow pot magnets to firmly hold tools, components, signage, and fixtures on ferrous surfaces. The steel pot protects the magnet core and enhances magnetic efficiency, resulting in consistent, long-lasting performance across a range of tasks.

Ideal for screwing in place with bolts or other M threaded connectors.

Benefits

- Maximum recommended operating temperature 150°C
- High direct clamping forces
- Magnet protected by the zinc plated mild steel body ('cup')
- Up to 35kg holding force
- Female threaded boss for screwing onto parts.

Performance

Magnetic Performance	Up to 35kg pull force - see next page
Magnet Type	NdFeB Pot Magnet Assembly
Temperature Range	Up to 150°C - Max. recommended

Suitability

Suitable Products	Mild Steel plates, Ferrous Surfaces, etc
Suitable Location	Multiple assemblies, Lighting, Home, Workshop, etc

Materials

Magnetic Material	Neodymium Iron Boron (NdFeB 42SH)
Other Parts	Mild Steel (Zinc Plated), adhesive

Maintenance

- There is no specific requirement to regularly inspect this item
- 150°C - Maximum recommended operating temperature
- Put Keeper plate back onto pot magnet for safe storage and during transit
- Easy cleaning of surfaces can be achieved using a cloth

Alternatives

- Neodymium NdFeB 42SH Bi-Pole Deep Pots
- Neodymium NdFeB 42SH Shallow Pots
- Alnico Deep Pots • Alnico Shallow Pots

Datasheet -Neodymium NdFeB 42SH Shallow Pots with Threaded Hole

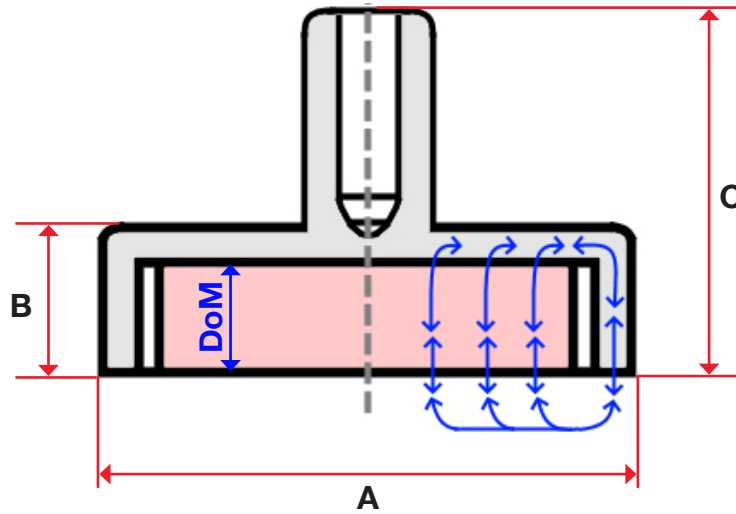


A Generic Example cross-section is shown for guidance

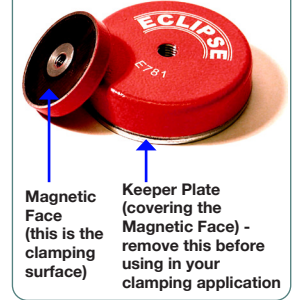
For simplicity, the cross-section shown does not show part-specific details such as glue lines/filler, etc.
The example shown is not to scale.

DoM = Direction of Magnetisation (inside the Permanent Magnet)

The blue arrows give a guidance to the magnetic pathways (shown on one half only) after the Keeper Plate has been removed. Where the magnetic pathways are out into the air gap - this is where you can place a ferrous part for the Pot Magnet to clamp against it.



Pot Magnet Keeper Plate:-



Product Number	A mm	B** mm	C mm	Thread Size mm	Ferrule Outer Dia. mm	Weight g	Pull Force* kg	Units / Pack
E770NEOSH	6	4.5	11.5	M3	6	2.7	0.5	20
E771NEOSH	8	4.5	11.5	M3	6	3.5	1.3	20
E772NEOSH	10	4.5	11.5	M3	6	4.5	2.5	20
E773NEOSH	13	4.5	11.5	M3	6	7.5	6	20
E774NEOSH	16	4.5	11.5	M4	8	13.2	9.5	20
E775NEOSH	20	6	13	M4	8	16.5	14	10
E776NEOSH	25	7	14	M4	8	34	20	10
E777NEOSH	32	7	15.5	M5	10	48	35	5

* The Pull Force is a Maximum Possible Pull Force Rating based on direct contact pull against a very thick and smooth finish high magnetic permeability mild steel plate. The actual performance is application specific - thinner material, less magnetic material, air gaps, and elevated temperatures, etc can all reduce the magnetic performance.

**Magnetic axis

For further assistance, please contact sales@eclipsemagnetics.com

Although we have made every attempt to provide accurate information, we do reserve the right to change any of the information in this document without notice.

We cannot accept any responsibility or liability for any errors or problems caused by using any of the information provided.

Conversions Guide:-

1kg ≈ 2.204lb ≈ 9.806N

1lb ≈ 0.453kg ≈ 4.448N

1N ≈ 0.101kg ≈ 0.224lb

10mm ≈ 0.393in (≈ 25/64in)

1in ≈ 25.4mm

(the above conversion values are rounded down)



FM 31278

EMS 616377

DATA-E770NEOSH-Iss1