



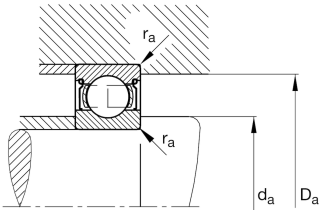
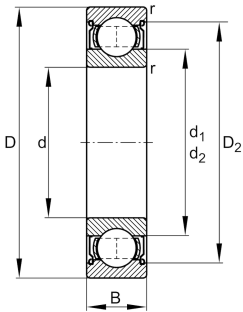
FAG

6028-2Z-C3 [🔗](#)

Deep groove ball bearing

Deep groove ball bearing 60...-2Z, single row, shields, steel sheet metal cage

Technical information



Your current product variant

Sealing	2Z	Non-contact shield on both sides
Cage	JN	Steel sheet metal
Tolerance class	PN	Normal (PN)
Dimensional / heat stabilization	S0	Rings dimensional stabilized up to 150°
Lubricant	GA13	Ball bearing and insert bearing grease, standard for D>62mm
Radial internal clearance	C3 (Group 3)	Internal clearance larger than CN
Bore type	Z	Cylindrical

Main Dimensions & Performance Data

d	140 mm	Bore diameter
D	210 mm	Outside diameter
B	33 mm	Width
C _r	117,000 N	Basic dynamic load rating, radial
C _{0r}	109,000 N	Basic static load rating, radial
C _{ur}	5,100 N	Fatigue load limit, radial
n _G	3,600 1/min	Limiting speed
n _{gr}	4,050 1/min	Reference speed
m	3.56 kg	Weight



Mounting dimensions

$d_{a\ min}$	148.8 mm	Minimum diameter shaft shoulder
$D_{a\ max}$	201.2 mm	Maximum diameter of housing shoulder
$r_{a\ max}$	2 mm	Maximum fillet radius

Dimensions

$r_{\ min}$	2 mm	Minimum chamfer dimension
$D_{\ 1}$	187.54 mm	Shoulder diameter outer ring
$D_{\ 2}$	191.28 mm	Caliber diameter outer ring
$d_{\ 1}$	161.85 mm	Shoulder diameter inner ring

Temperature range

$T_{\ min}$	-20 °C	Operating temperature min.
$T_{\ max}$	120 °C	Operating temperature max.

Calculation factors

$f_{\ 0}$	16	Calculation factor
-----------	----	--------------------

Characteristics

	Radial load
	Axial load in one direction
	Axial load in two directions
	Lifetime lubrication, freedom from maintenance
	Grease Lubrication
	Sealed on both sides