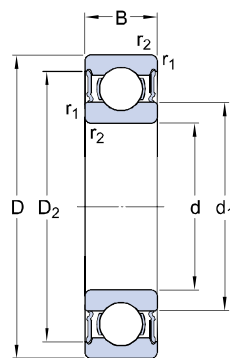




# Deep groove ball bearings, single row, stainless steel

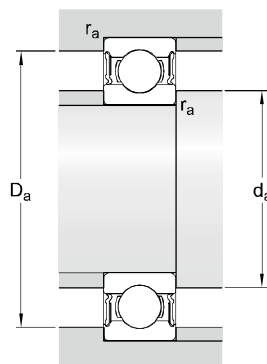
W 6003-2RS1/VP311

## Dimensions



d		17	mm
D		35	mm
B		10	mm
d <sub>1</sub>	≈	23.5	mm
D <sub>2</sub>	≈	31.8	mm
r <sub>1,2</sub>	mi n.	0.3	mm

## Abutment dimensions



d <sub>a</sub>	mi n.	19	mm
d <sub>a</sub>	ma x.	23	mm
D <sub>a</sub>	ma x.	33	mm
r <sub>a</sub>	ma x.	0.3	mm

## Calculation data

Basic dynamic load rating	C	4.9	kN
Basic static load rating	C <sub>0</sub>	3.1	kN
Fatigue load limit	P <sub>u</sub>	0.13	kN
Limiting speed		13000	r/min
Calculation factor	k <sub>r</sub>	0.03	
Calculation factor	f <sub>0</sub>	14.1	

## Mass

Mass bearing		0.0385	kg
--------------	--	--------	----