

3M™ Full Facepiece Reusable Respirator, FF-600F Series

Technical Data Sheet

Description

The 3M™ Full Facepiece Reusable Respirator FF-600F can be used with approved 3M™ DT-Series filters* with a 40mm thread to protect against gases, vapours and/or particulates depending on your individual needs.

Please note, the 3M™ Full Facepiece Reusable Respirator FF-600F, was previously named the Scott™ Vision™ 2 Reusable Full Mask, RFF1000.

*Filters previously from the Scott Safety Pro2000 range.

The visor is moulded in polycarbonate and hard coated to offer excellent scratch resistance.

The face seal is silicone, which provides a highly flexible seal making it easy to rapidly achieve an efficient and comfortable fit.

The inner mask is an essential part of the respirator airflow management system which directs inhaled air onto the visor to prevent misting and directs exhaled air through the exhalation valve. It is moulded in TPE with a matt finish which prevents reflective glare on the inside of the visor.

The respirator also features 2 inhalation valves, a 5-point adjustable rubber harness with quick release moulded buckles, a standard 40mm thread front filter fitting and a speech diaphragm.

Key features

- Speech diaphragm
- Front port filter
- Three sizes FF-601F Small, FF-602F Medium and FF-603F Large
- Spectacle kit available
- Facepiece weight: approx. 550 grams

Standards

The Protector FF-600F full face respirator is certified to AS/NZS 1716:2012.



Materials

Component	Material
Facemask	Silicone
Inner Mask	Thermoplastic Elastomer
Head Harness	EPDM
Visor	Polycarbonate

Filters

The FF-600F has a front filter connection with a standard 40mm filter thread. FF-600F accepts gas & vapour, particle and combined filters from the comprehensive DT-Series filter range.



Key use limitation

1. This respirator does not supply oxygen. Do not use in atmospheres containing less than 19.5% oxygen.
2. Do not use for respiratory protection against atmospheric contaminants that have poor warning properties or are unknown or immediately dangerous to life and health (IDLH) or against contaminants which generate high heats of reaction with chemical filters.
3. Do not misuse, alter, modify or repair this product.
4. Do not use with beards or other facial hair that prevent direct contact between face and edge of the respirator.
5. Do not use with unknown concentrations of contaminants.
6. Leave the work area immediately and check the integrity of the respirator and replace face mask if:
 - a. Damage has occurred or is apparent
 - b. Breathing becomes difficult or increased breathing resistance occurs
 - c. Dizziness or other distress occurs
 - d. You taste or smell the contaminant or an irritation occurs
7. Use strictly in accordance with respirator and filter user instruction leaflet.

For full use limitations please refer to the product user instructions.

Protection Factors

According to AS/NZS 1715.

Combination	Required Min Protection Factor AS/NZS 1715*	Maximum Gas/Vapour Concentration Present In The Air In Ppm (Volume)
Full Face Respirator with Particulate P3 Filter	Up to 100	
Full Face Respirator with Gas & Vapour Filter Class 1	Up to 50	1000 ppm
Full Face Respirator with Gas & Vapour Filter Class 2	Up to 100	5000 ppm

*Refer AS/NZS 1715: Selection use and maintenance of respiratory protective equipment.

Cleaning and storage

Cleaning is recommended when necessary

If during use the equipment may have become contaminated by hazardous substances, the contamination must be identified and properly removed or the contaminated components must be replaced before next use.

Disposal of the contaminated components must be carried out in accordance with local regulatory requirements.

1. Inspect the equipment for worn or ageing or damaged components.
2. Carefully wipe the facemask clean with a warm water solution containing a mild detergent. The facemask may also be wiped with 3M™ Cleaning Wipes, 504.
3. If necessary, wash the outside of the breathing hose carefully using warm water solution containing a mild detergent. Ensure the breathing hose connections are free from all dirt or debris that could prevent an effective seal with the blower.
4. Once clean all components must be left to dry naturally.

Storage & Transportation

Device must be protected from damage during transportation.

When not in use the equipment should be stored in a clean, dry environment, away from direct heat sources between -10°C and +50°C and at a humidity of less than 75% RH.

Shelf life

Shelf life: 5 year from production date when stored at storage conditions described on packaging.

The shelf life as defined above remains a indicative and maximum data, subject to many external and non-controllable factors.

It may never be interpreted as a warranty. Always check that all mask components are in good condition before use

Disposal

Disposal of the components must be carried out in accordance with local and national regulatory requirements.

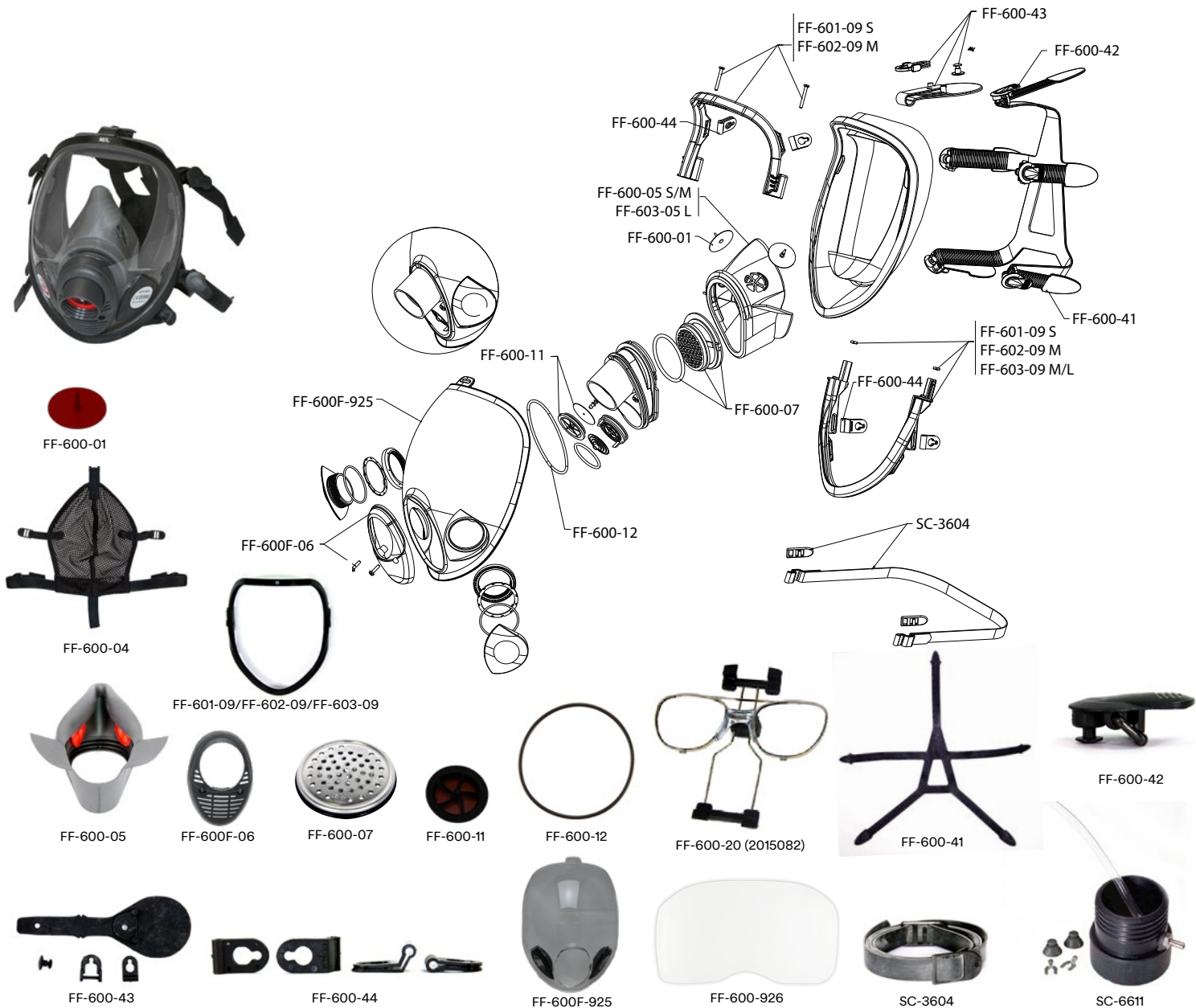
Ordering Information

SAP ID	Legacy ID	Availability		Model #	Description
		AUS	NZ		
7100265075	UU011565585	•		FF-601F	3M™ Front-Fitting Reusable Full Face Mask, FF-601F, Small, 4 ea/Case
7100265074	UU011565593	•		FF-602F	3M™ Front-Fitting Reusable Full Face Mask, FF-602F Medium, 4 ea/Case
7100265236	UU015546932	•		FF-603F	3M™ Front-Fitting Reusable Full Face Mask FF-603F Large, 4 ea/Case



Filters

SAP ID	Legacy ID	Availability		Model #	Description
		AUS	NZ		
7100260622	UU011502539	•	•	DT-1135E	3M™ Particulate Filter PF10 P3 & PAPR-P3 DT-1135E, 10 ea/Case
7100264834	UU011546916	•	•	DT-4001E	3M™ Gas & Vapour Filter GF22 A2 DT-4001E, 10 ea/Case
7100260646	UU011502554	•	•	DT-4031E	3M™ Combination Filter DT-4031E, CF22 A2P3, 10 ea/Case
7100260644	UU011502570	•	•	DT-4035E	3M™ Combination Filter DT-4035E, CF22 A2B2P3, 10 ea/Case
7100260627	UU011507462	•	•	DT-4036E	3M™ Combination Filter CF22 A2B2E1P3 DT-4036E, 10 Each/Case
7100260628	UU011502596	•	•	DT-4045E	3M™ Combination Filter DT-4045E, CF32 A2B2E2K2P3 & PAPR-B1E1K1P3, 10 ea/Case
7100260645	UU011502588	•	•	DT-4046E	3M™ Combination Filter CF32 A2B2E2K2HgP3 DT-4046E, 10 Each/Case
7100264837	UU011546965	•	•	DT-4047E	3M™ Combination Filter CF32 AXP3 DT-4047E, 10 ea/Case
7100236853	UU010979753	•	•	SS-6601/SC-6601	3M™ Prefilter and Prefilter Holder SS-6601, 5 ea/Case
7100236854	UU010979779	•	•	SS-6600/SC-6600	3M™ Prefilter SS-6600, 100 ea/Case
7100237883	XP100544442	•	•	SS-6607/SC-6607	3M™ Filter Cover SS-6607, 10 ea/Case
7012917340	XP100218930	•	•	SS-6603 (5052694)	3M™ Scott™ Filter Shower Cover SS_6603/5052694



Spare Parts

SAP ID	Legacy ID	Availability		Model #	Description
		AUS	NZ		
7012917729	XP100544756	•	•	FF-600-01	3M™ Inhalation Valve FF-600-01, for FF-600/FF-600F 50 ea/Case
7100236819	UU010979548	•	•	FF-600-04	3M™ Scott™ Polynet Head Harness FF-600/FF-600F, FF-600-04
7100265027	UU011544549	•	•	FF-600-05	3M™ Nose Cup Assembly FF-600-05, Small/Medium, for FF-600/FF-600F 1 ea/Case
7100265233	UU011544556	•	•	FF-603-05	3M™ Nose Cup Assembly, FF-603-05, Large, for FF-600/FF-600F 1 ea/Case
7100265058	UU011565791	•		FF-600F-06	3M™ Scott™ Front Cover for FF-600F, FF-600F-06
7100266047	UU011589130	•	•	FF-600-07/2003437	3M™ Speech Diaphragm Assembly FF-600-07, for FF-600/FF-600F 10 ea/Case
7100265057	UU011565809	•	•	FF-601-09	3M™ Scott™ Visor Frame Assembly Small for FF-600/FF-600F, FF-601-09
7100265059	UU011565775	•	•	FF-602-09	3M™ Scott™ Visor Frame Assembly Medium for FF-600/FF-600F, FF-602-09
7100265047	UU011565759	•	•	FF-603-09	3M™ Scott™ Visor Frame Assembly Medium/Large for FF-600/FF-600F, FF-603-09
7100265046	UU011565742	•	•	FF-600-11	3M™ Scott™ Inhalation Valve Seat Set for FF-600/FF-600F, FF-600-11

SAP ID	Legacy ID	Availability		Model #	Description
		AUS	NZ		
7100236822	UU010979126	•	•	FF-600-12	3M™ Front Fitting Gasket FF-600-12, for FF-600/FF-600F 20 ea/Case
7100236821	UU010979514	•	•	FF-600-20	3M™ Spectacle Kit FF-600-20, for FF-600/FF-600F 4 ea/Case
7100265053	UU011565734	•	•	FF-600-41	3M™ Head Harness Assembly FF-600-41, for FF-600/FF-600F 2 ea/Case
7100265077	UU011566047	•	•	FF-600-42	3M™ Scott™ Buckle And Roller Pack for FF-600/FF-600F, FF-600-42
7100265241	UU011565767	•	•	FF-600-43	3M™ Scott™ Head Harness Clips for FF-600/FF-600F, FF-600-43
7012917510	XP100065638	•	•	FF-600-44	3M™ Scott™ Hinge Pack 3 + 2 Vision 3 Mask FF-600-44/1033128, For FF-600/FF-600F 5 Pack/Case
7100266117	UU011589148	•		FF-600F-925	3M™ Scott™ Standard Visor for FF-600F, FF-600F-925 5 ea/Case
7100236084	UU010979506	•	•	FF-600-926	3M™ Visor Peel Offs FF-600-926, for FF-600/FF-600F 20 ea/Case
7100265981	XP100065687	•	•	SC-3604	3M™ Neck Strap Assembly SC-3604, 1 ea/Case
7100265515	UU011580360	•	•	SC-6611/RXFTA/STAN	3M™ Scott™ Fit Test Adapter SC-6611 DIN40, QNFT-CNC 1 ea/Case

Important Notice

To the extent permitted by law, 3M shall not be liable for any loss or damage including any loss of business, loss of profits, or for any indirect, special, incidental or consequential loss or damage arising from reliance upon any information herein provided by 3M. Nothing in this statement will be deemed to exclude or restrict 3M's liability for death or personal injury arising from its negligence.



Technical Statement

Technical Information: The technical information, guidance, and other statements contained in this document or otherwise provided by 3M are based upon records, tests, or experience that 3M believes to be reliable, but the accuracy, completeness, and representative nature of such information is not guaranteed. Such information is intended for people with knowledge and technical skills sufficient to assess and apply their own informed judgment to the information. No license under any 3M or third party intellectual property rights is granted or implied with this information.

Product Selection and Use: Many factors beyond 3M's control and uniquely within user's knowledge and control can affect the use and performance of a 3M product in a particular application. As a result, customer is solely responsible for evaluating the product and determining whether it is appropriate and suitable for customer's application, including conducting a workplace hazard assessment and reviewing all applicable regulations and standards. Failure to properly evaluate, select, and use a 3M product in accordance with all applicable instructions and with appropriate safety equipment, or to meet all applicable safety regulations, may result in injury, sickness, death, and/or harm to property.



3M Australia Pty Ltd
Personal Safety Division
 Bldg A, 1 Rivett Road
 North Ryde NSW 2113
 Customer Service: 1300 363 565
 Email: 3msupport.safety.au@mmm.com
 Web: www.3M.com/au/ppesafety

3M New Zealand Ltd
Personal Safety Division
 94 Apollo Drive, Rosedale
 Auckland 0632
 Customer Service: 0800 252 627
 Email: 3msupport.safety.nz@mmm.com
 Web: www.3M.com/nz/ppesafety

3M is a trademark of 3M Company.
 © 3M 2025. All rights reserved.