



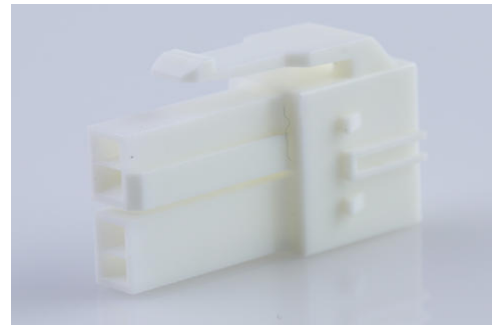
**Part Number :** [1510492211](#)

**Product Description :** CP-6.5 Receptacle Housing, 6.50mm Pitch, Dual Row, Polarized, Positive Lock, 2 Circuits, Natural

**Series Number :** 151049

**Status :** Active

**Product Category :** Connector Housings



---

## Documents & Resources

### Drawings

[1510492211\\_sd.pdf](#)

[PK-151049-0001-001.pdf](#)

### 3D Models and Design Files

[STEP AP242](#)

[SOLIDWORKS](#)

[Creo](#)

### Specifications


[PS-151048-0001-001.pdf](#)

[1510480001-TS-000.pdf](#)

---

## Product Environment Compliance

### Compliance

GADSL/IMDS	Not Relevant
China RoHS	 per SJ/T 11365-2006
EU ELV	Not Relevant
Low-Halogen Status	Not Low-Halogen per IEC 61249-2-21
REACH SVHC	Not Contained per D(2025)4165-DC (25 June 2025)
EU RoHS	Compliant per EU 2015/863

[Compliance Statements](#)

- EU RoHS
- REACH SVHC
- Low-Halogen

#### Industry Documents

- IPC 1752A Class C
- IPC 1752A Class D
- Molex Product Compliance Declaration
- IEC-62474
- chemSHERPA (xml)

#### Substances of Interest

- PFAS

#### EU RoHS Certificate of Compliance

#### Additional Product Compliance Information

## Part Details

### General

Status	Active
Category	Connector Housings
Series	151049
Description	CP-6.5 Receptacle Housing, 6.50mm Pitch, Dual Row, Polarized, Positive Lock, 2 Circuits, Natural
Application	Power, Wire-to-Board
Comments	See Product Specification for maximum current rating by circuit size and wire AWG
Product Name	CP-6.5
UPC	889056065863

### Agency

CSA	LR19980
UL	E29179

### Physical

Circuits (maximum)	2
Color - Resin	Natural (White)
Flammability	94V-0

Gender	Receptacle
Glow-Wire Capable	No
Keying to Mating Part	Yes
Lock to Mating Part	Yes
Material - Resin	PBTP
Net Weight	1.007/g
Number of Rows	2
Packaging Type	Bag
Panel Mount	No
Pitch - Mating Interface	6.50mm
Pitch - Termination Interface	6.50mm
Polarized to Mating Part	Yes
Temperature Range - Operating	-40° to +105°C

### Solder Process Data

Lead-Free Process Capability	N/A
------------------------------	-----

---

### Mates With / Use With

#### Mates with Part(s)

Description	Part Number
CP-6.5 Header, 6.50mm Pitch, Dual Row, Vertical, Polarized, Positive Lock, Tray Packaging, Glow-Wire Capable, 2 Circuits, Natural (White)	<u>1510481211</u>
CP-6.5 Header, 6.50mm Pitch, Dual Row, Vertical, Polarized, Positive Lock, Tube Packaging, Glow-Wire Capable, 2 Circuits, Natural (White)	<u>1510482211</u>

#### Use with Part(s)

Description	Part Number
CP-6.5 Wire-to-Board Crimp Terminal, Female, 22-16 AWG, Reel	<u>505978000</u>
CP-6.5 Wire-to-Board Crimp Terminal, Female, 26-20 AWG, Reel	<u>505988000</u>
CP-6.5 Terminal Position Assurance	

(TPA) Retainer, 1 Circuit	511430105
---------------------------	-----------

---

This document was generated on Sep 23, 2025