



Connectors > Connector Accessories > Connector Hardware > Universal Headers: Ejector Latch



Connector Hardware Accessory Type: **Latch**
Primary Product Color: **Black**
Primary Product Material: **Glass-Filled Nylon**
Hardware Accessory Function: **Latching, Locking & Retention**

[All Universal Headers: Ejector Latch \(8\)](#)

Features

Product Type Features

Connector Hardware Accessory Type	Latch
Hardware Accessory Function	Latching, Locking & Retention

Body Features

Primary Product Color	Black
Primary Product Material	Glass-Filled Nylon

Dimensions

	.785 in
--	---------

Industry Standards

UL Flammability Rating	UL 94V-0
------------------------	----------

Packaging Features

Packaging Method	Package
Packaging Quantity	1

Product Compliance



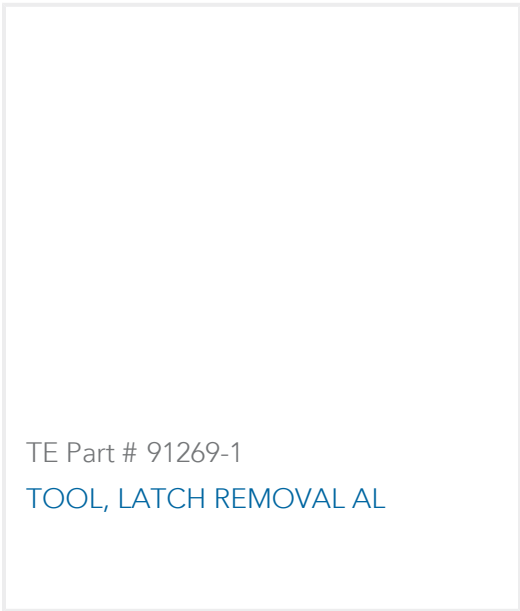
For compliance documentation, visit the product page on TE.com>

EU RoHS Directive 2011/65/EU	Compliant
EU ELV Directive 2000/53/EC	Compliant
China RoHS 2 Directive MIIT Order No 32, 2016	No Restricted Materials Above Threshold
EU REACH Regulation (EC) No. 1907/2006	Current ECHA Candidate List: JAN 2025 (247) Candidate List Declared Against: JAN 2025 (247) Does not contain REACH SVHC
Halogen Content	Not Low Halogen - contains Br or Cl > 900 ppm.
Solder Process Capability	Not applicable for solder process capability

Product Compliance Disclaimer

This information is provided based on reasonable inquiry of our suppliers and represents our current actual knowledge based on the information they provided. This information is subject to change. The part numbers that TE has identified as EU RoHS compliant have a maximum concentration of 0.1% by weight in homogenous materials for lead, hexavalent chromium, mercury, PBB, PBDE, DBP, BBP, DEHP, DIBP, and 0.01% for cadmium, or qualify for an exemption to these limits as defined in the Annexes of Directive 2011/65/EU (RoHS2). Finished electrical and electronic equipment products will be CE marked as required by Directive 2011/65/EU. Components may not be CE marked. Additionally, the part numbers that TE has identified as EU ELV compliant have a maximum concentration of 0.1% by weight in homogenous materials for lead, hexavalent chromium, and mercury, and 0.01% for cadmium, or qualify for an exemption to these limits as defined in the Annexes of Directive 2000/53/EC (ELV). Regarding the REACH Regulation, the information TE provides on SVHC in articles for this part number is based on the latest European Chemicals Agency (ECHA) 'Guidance on requirements for substances in articles' posted at this URL: <https://echa.europa.eu/guidance-documents/guidance-on-reach>

Compatible Parts



Also in the Series | AMP-LATCH Universal Headers

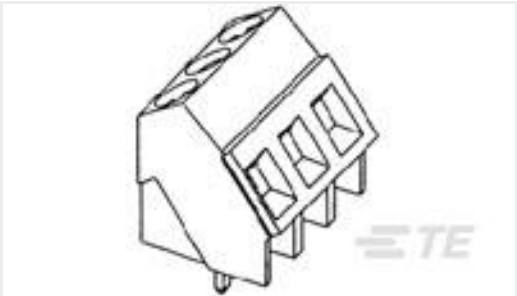


[Connector Hardware\(13\)](#)

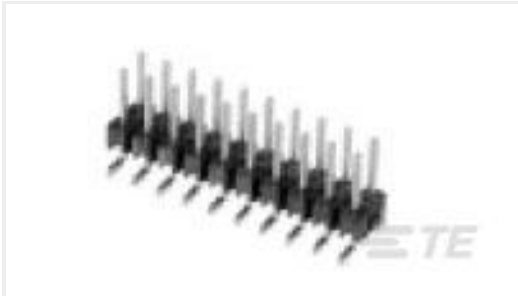


[Ribbon Cable Connectors\(523\)](#)

Customers Also Bought



TE Part #1-282847-0
[TERMI-BLOK PCB MOUNT 35 10P.](#)



TE Part #5-146131-4
[10 MODII HDR DRST SFMNT B/A LF](#)



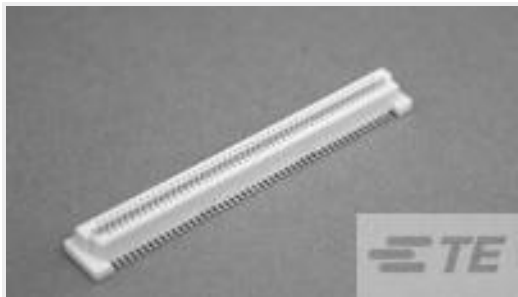
TE Part #8-1879208-3
[CPF 0402 27K 0.1% 25PPM 1K RL](#)



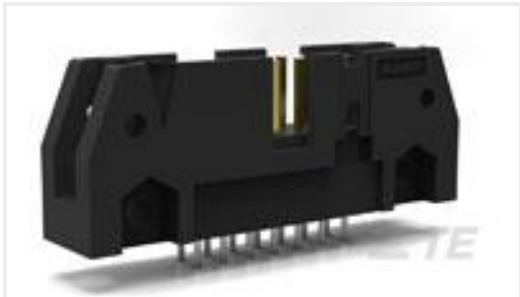
TE Part #1-1825002-4
[ADF08T04=DIP SWT,FLUSH,THRU/HL](#)



TE Part #7-1879215-3
[CPF 0402 26K1 0.1% 25PPM 1K RL](#)



TE Part #1735482-1
[0.8FH,R17H.5,040,08/Sn,TR,SC](#)



TE Part #5102153-6
[A/L UNIV HDR 26P VERT](#)



TE Part #3-1393238-4
[RTB34024](#)



TE Part #9-146252-0
[80 MODII HDR DRST B/A .100 LF](#)



TE Part #1393793-8
[V23105A5403A201](#)

Documents

[Product Drawings](#)
[UNIVERSAL HEADER LATCH](#)
English

[CAD Files](#)
[3D PDF](#)
3D
[Customer View Model](#)
[ENG_CVM_CVM_102185-1_W.2d_dxf.zip](#)



English

Customer View Model

[ENG_CVM_CVM_102185-1_W.3d_igs.zip](#)

English

Customer View Model

[ENG_CVM_CVM_102185-1_W.3d_stp.zip](#)

English

By downloading the CAD file I accept and agree to the [Terms and Conditions](#) of use.

Agency Approvals

[Agency Approval Document](#)

English