

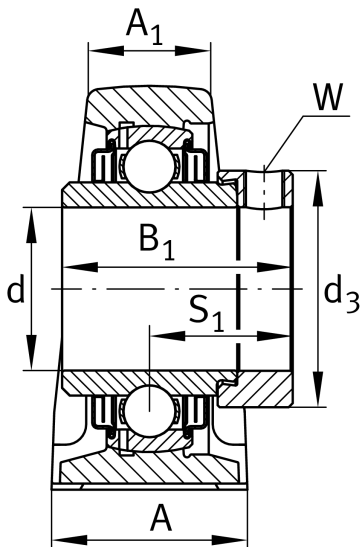
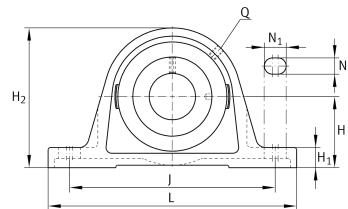
**LASE20-XL-N**

Plummer block housing unit

Plummer block housing units LASE, cast iron housing, radial insert ball bearing with eccentric locking collar, L seals

X-life

Technical information



Your current product variant

Material	GG	Grey cast iron
Groove	N	Cast iron housing with undercut slot for end caps

Main Dimensions & Performance Data

d	20 mm	Bore diameter
L	130 mm	Length total
H 2	64 mm	Height
≈m	0.63 kg	Weight

Mounting dimensions

J	97.5 mm	Distance fixing bore
N	11 mm	Width (slot)
N 1	19 mm	Length (slot)



Dimensions

H	33.3 mm	Distance shaft axis
A	32 mm	Width (base)
A <sub>1</sub>	19 mm	Width (head)
H <sub>1</sub>	14.5 mm	Heigth (base)
B <sub>1</sub>	43.7 mm	Locking collar total width
S <sub>1</sub>	26.6 mm	Distance of raceway to locking collar
Q	M6	Connection thread for lubrication

Additional information

ASE04-FA125	Housing
GE20-XL-KLL-B	Bearing designation
KASK04	Protecting cap

Temperature range

T <sub>min</sub>	-40 °C	Operating temperature min.
T <sub>max</sub>	180 °C	Operating temperature max.