

Features

- Built in compliance with the construction and safety S2 specifications of standard EN 837-1
- Can be used with gaseous or liquid media that are not-corrosive to copper alloy.
- Dial size 63 mm
- IP67
- Glycerine Filled
- Back connection
- Stainless Steel Case
- Copper alloy socket and bourdon tube
- Polycarbonate Window
- 1/4" BSP-Male
- Range 0/6 bar

RS PRO Bourdon tube pressure gauges anti-vibration version

RS Stock No.: 0179984



RS PRO is the own brand of RS. The RS PRO Seal of Approval is your assurance of professional quality, a guarantee that every part is rigorously tested, inspected, and audited against demanding standards. Making RS PRO the Smart Choice for our customers.

Product Description

Buy this product from www.rspro.com

Page 1 of 3

These instruments are built in compliance with the construction and safety S2 specifications of standard EN 837-1.

They are designed for use on power units, pump, hydro-cleaning machines, presses, engine compressors, turbines, diesel engines, refrigerating plants and on machines and equipment where pulsating pressures or mechanical vibrations are present.

They can be used with gaseous or liquid media that are not-corrosive to copper alloy and which do not have low viscosity or do not crystalize.

General Specifications

Mounting Type	Back Entry
Display type	Analogue
Series	RS 1.10.3
Case Material	Stainless Steel
Socket material	Copper Alloy
Bourdon tube material	Copper Alloy
Window Material	Polycarbonate
Ring Material	Stainless steel, polished, crimped
Protection Degree	IP67

Mechanical Specifications

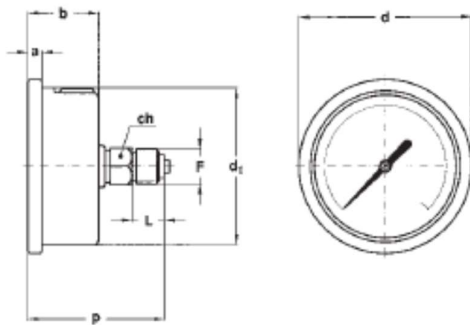
Pressure Range	0 → 6 bar
Working Pressure	75% of FSV for static pressure; 66% of FSV for pulsating pressure
Maximum Pressure Measurement	6 bar
Minimum Pressure Measurement	0 bar
Connection Size	¼" BSP Male
Gauge Outside Diameter	63mm
Over pressure limit (15 min max)	25% of FSV
Accuracy Class	1,6 as per EN 837-1
Minimum Operating Temperature	0°C
Maximum Operating Temperature	+65°C
Calibrated	No

Approvals

Declarations	Directive 2014/68/EU - Pressure Equipment Directive (PED)
Standards Met	EN 837-1

Technical Specifications and Drawings

Filled Model – Back Connection



F	a	b	d	d1	p	L	ch	Weight
G 1/4"A	5,6	28	68	62,6	54,8	13	14 x 9	0,21 kg

Dimensions: mm