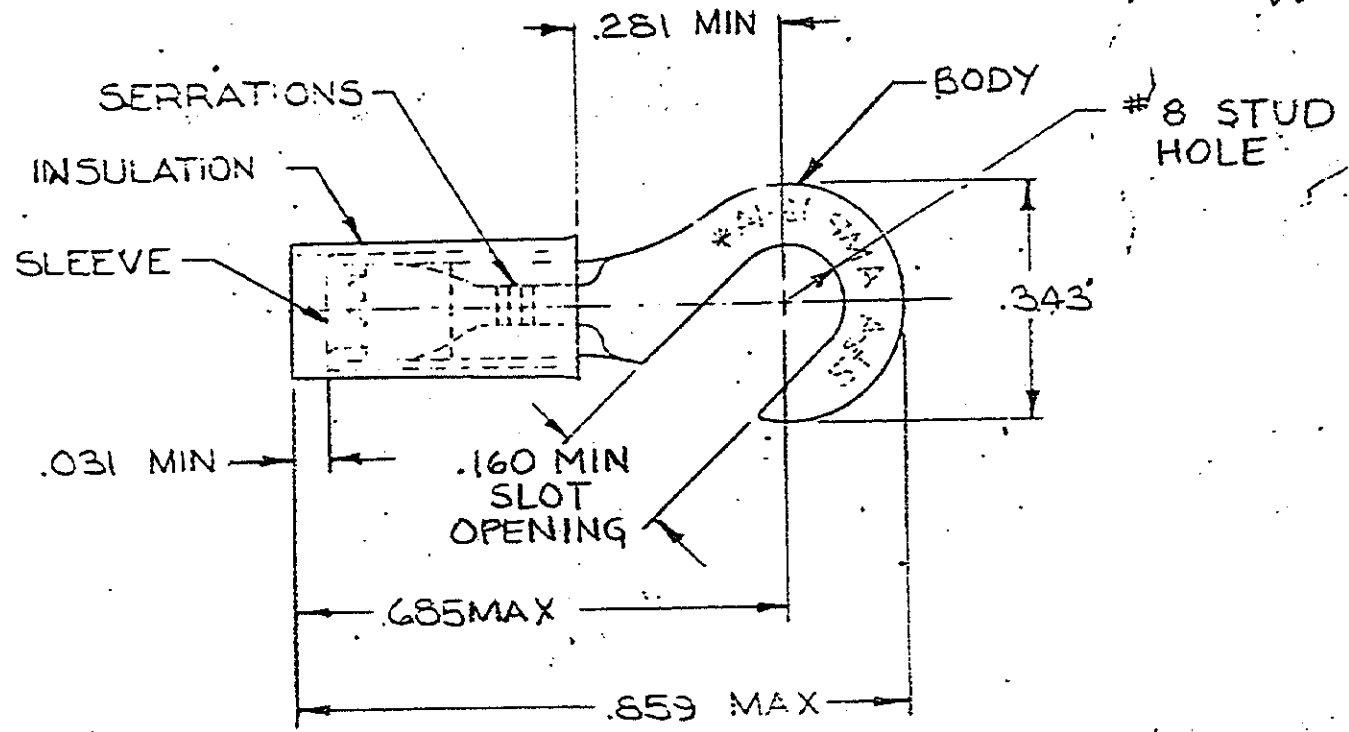


DRAWING MADE IN AMERICAN PROJECTION

G 14 1

© 1960 BY AMP INCORPORATED. ALL RIGHTS RESERVED. AMP PRODUCTS COVERED BY PATENTS AND/OR PATENTS PENDING.

REVISIONS			
LTR	DESCRIPTION	DATE	APPROVED
E	REV PER G-009491	12/1/71	
F	REV. / 0720-0056-93	12/16/78	
C	REV PER G-4732	JT 7/26/88	
D	REACTIVATE 2--1 G-5278	WES 8/31/89	



FOR .115 TO .170 WIRE INSULATION DIA.
TONGUE MATERIAL THK = .031 ± .002

QTY	DESCRIPTION	PART NO.	MATERIAL & FINISH
100	LOOSE PC. BOX	8-320306-1	
1	320306 ON TAPE	2-320306-1	BODY: COPPER (QG-C-576) THN PL (MIL-T-10727)
1	WIRE TERMINAL	320306	SLEEVE: COPPER (QG-C-576) INSULATION: NYLON COLOR: BLUE

UNLESS OTHERWISE SPECIFIED DIMENSIONS ARE IN INCHES TOLERANCES ON: DECIMALS : .008 ANGLES : 5°	CONTRACT NO.		 AMP INCORPORATED HARRISBURG, PENNSYLVANIA	
	DR. Wayne Millhous 3-2-70	CHK. P.C. Hooper 3-3-70		NAME WIRE TERMINAL
	APPD. L. W. Abel 3-3-70	REL. P.C. Hooper 3-3-70		P.I. D.G-HOOK
	DSGN APPD. /	OTHER APPD.		WIRE SIZE: 16-14
MATERIAL SEE TABLE	SIZE A	CODE IDENT NO. 00779	NUMBER 320306	
SCALE: 1/1			SHEET 1 OF 1	

CUSTOMER DRAWING