

STRADELLA-8-HV-VSM

IESNA Type V (square) beam for wide areas lighting such as car parks. Variant with longer distance between location pins allowing high voltage circuit designs.

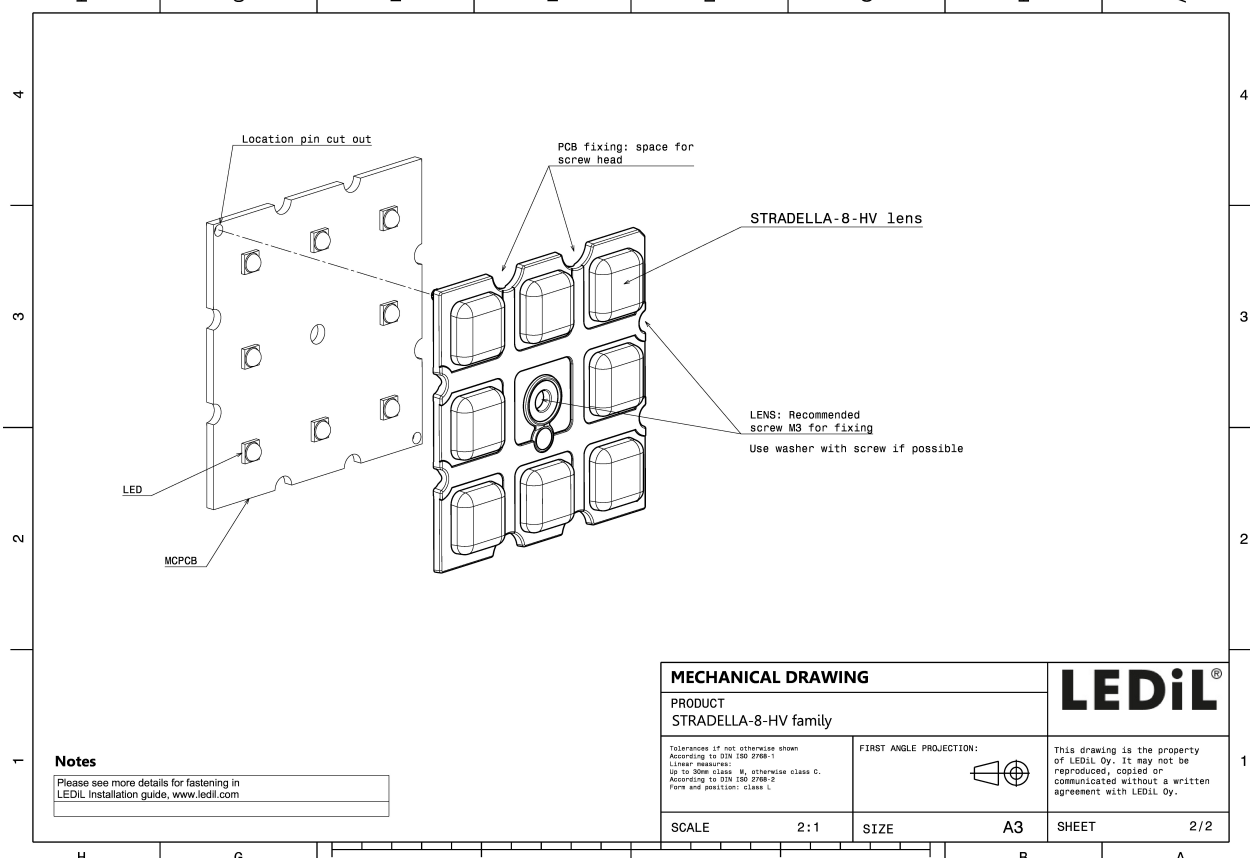
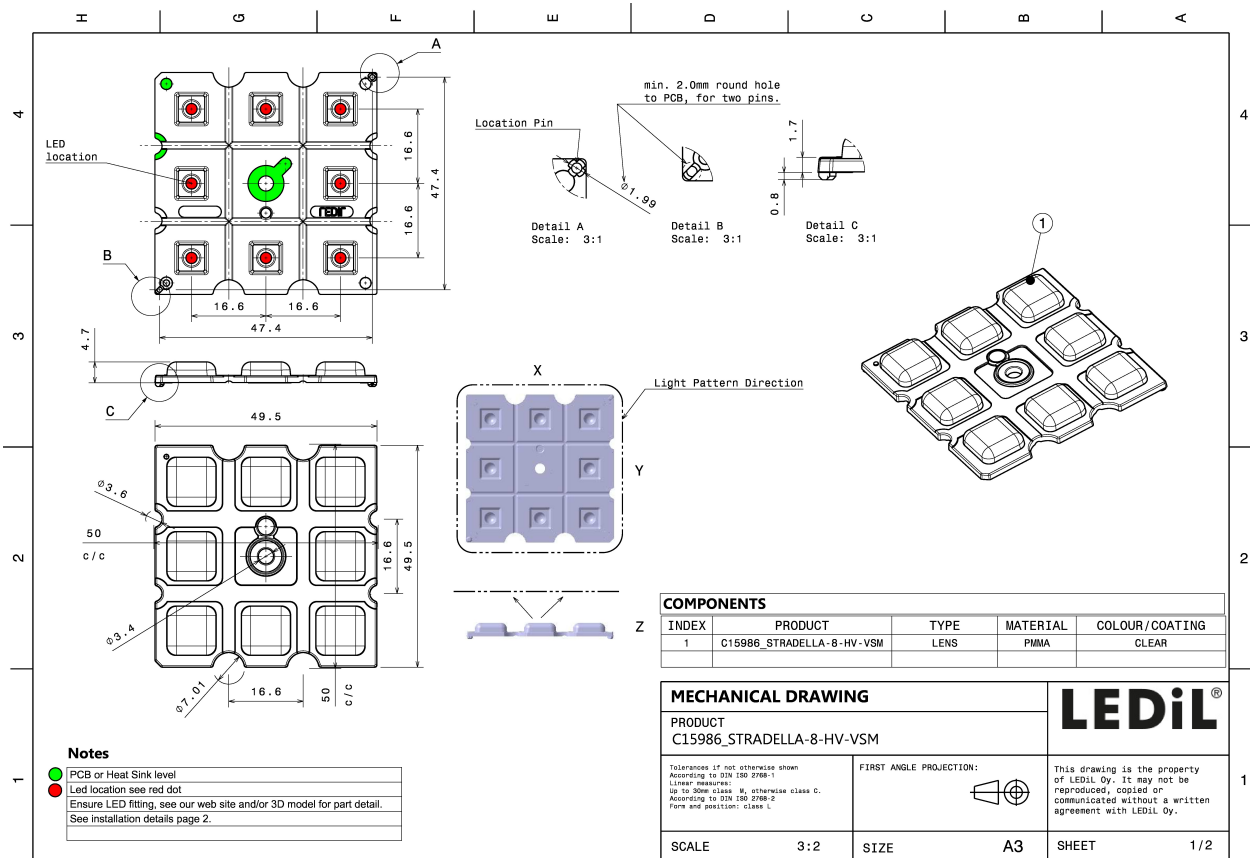
TECHNICAL SPECIFICATIONS:

Dimensions	49.5 mm
Height	5.5 mm
Fastening	pin, screw
Colour	clear
Box size	480 x 280 x 300 mm
Box weight	5.3 kg
Quantity in Box	800 pcs
ROHS compliant	yes ⓘ



MATERIAL SPECIFICATIONS:

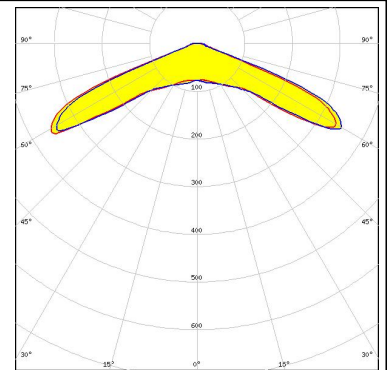
Component	Type	Material	Colour
STRADELLA-8-HV-VSM	Multi-lens	PMMA	clear



PHOTOMETRIC DATA (MEASURED):

CREE

LED XD16
FWHM 136.0°
Efficiency 0 %
Peak intensity 94.000 cd/lm
LEDs/each optic 1
Light colour White
Required components:



CREE

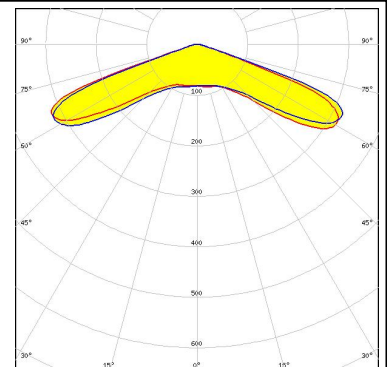
LED XT-E
FWHM 147.0°
Efficiency 94 %
Peak intensity 0.420 cd/lm
LEDs/each optic 1
Light colour White
Required components:

LUMILEDS

LED LUXEON 3030 2D (Round LES)
FWHM 137.0°
Efficiency 94 %
Peak intensity 0.530 cd/lm
LEDs/each optic 1
Light colour White
Required components:

LUMILEDS

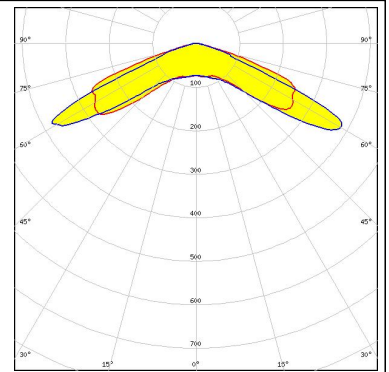
LED LUXEON V2
FWHM Asymmetric
Efficiency 94 %
Peak intensity 0.440 cd/lm
LEDs/each optic 1
Light colour White
Required components:



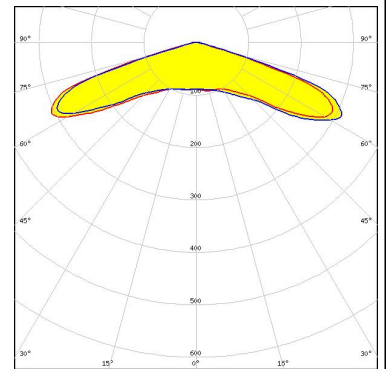
PHOTOMETRIC DATA (MEASURED):



LED NF2W585AR
FWHM 140.0°
Efficiency 94 %
Peak intensity 0.440 cd/lm
LEDs/each optic 1
Light colour White
Required components:

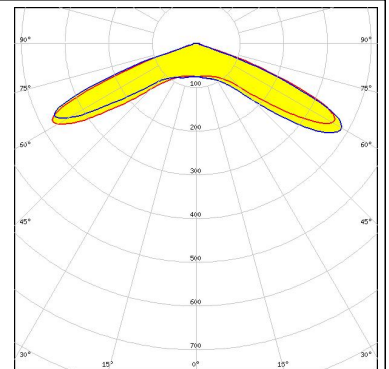


LED NVSW219D
FWHM 145.0°
Efficiency 94 %
Peak intensity 0.400 cd/lm
LEDs/each optic 1
Light colour White
Required components:



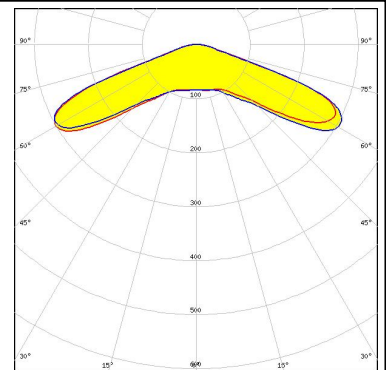
SEOUL SEMICONDUCTOR

LED DC 3030C
FWHM Asymmetric
Efficiency 94 %
Peak intensity 0.515 cd/lm
LEDs/each optic 1
Light colour White
Required components:



SEOUL SEMICONDUCTOR

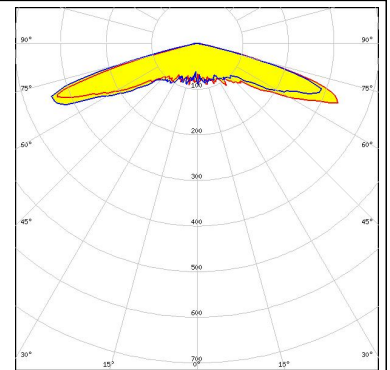
LED Z5M3
FWHM 141.0°
Efficiency 94 %
Peak intensity 0.400 cd/lm
LEDs/each optic 1
Light colour White
Required components:



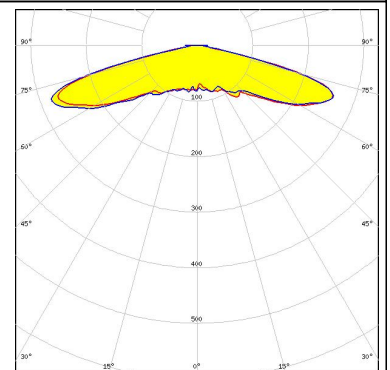
PHOTOMETRIC DATA (SIMULATED):



LED XP-G2
FWHM 148.0°
Efficiency 94 %
Peak intensity 0.470 cd/lm
LEDs/each optic 1
Light colour White
Required components:



LED XP-G3
FWHM 152.0°
Efficiency 94 %
Peak intensity 0.360 cd/lm
LEDs/each optic 1
Light colour White
Required components:



LED LUXEON 3535 2D
FWHM 143.0°
Efficiency 94 %
Peak intensity 0.490 cd/lm
LEDs/each optic 1
Light colour White
Required components:



LED LUXEON FlipChip White 10
FWHM 136.0°
Efficiency 89 %
Peak intensity 0.440 cd/lm
LEDs/each optic 1
Light colour White
Required components:

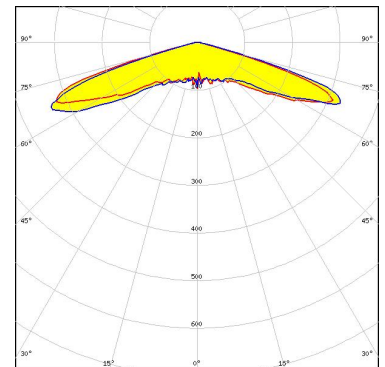
PHOTOMETRIC DATA (SIMULATED):



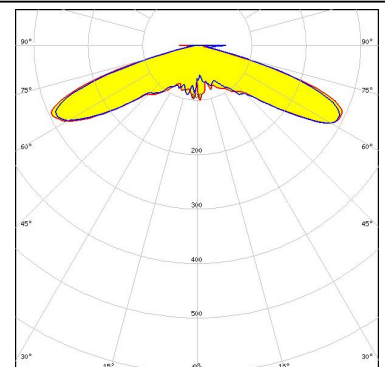
LED NF2x757D
FWHM 140.0°
Efficiency 94 %
Peak intensity 0.560 cd/lm
LEDs/each optic 1
Light colour White
Required components:



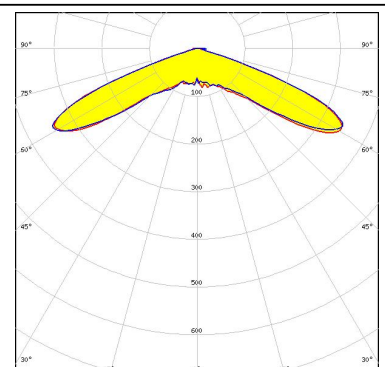
LED OSOLON Square CSSRM2/CSSRM3
FWHM 144.0°
Efficiency 94 %
Peak intensity 0.480 cd/lm
LEDs/each optic 1
Light colour White
Required components:



LED LH181A
FWHM 150.0°
Efficiency 94 %
Peak intensity 0.400 cd/lm
LEDs/each optic 1
Light colour White
Required components:



LED LH181B
FWHM 140.0°
Efficiency 94 %
Peak intensity 0.450 cd/lm
LEDs/each optic 1
Light colour White
Required components:



GENERAL INFORMATION:

NOTE: The typical beam angle will be changed by different color, chip size and chip position tolerance. The typical total beam angle is the full angle measured where the luminous intensity is half of the peak value.

MATERIALS:

As part of our continuous research and improvement processes, and to ensure the best possible quality and availability of our products, LEDiL reserves the right to change material grades without notice.

PRODUCT DATA USER AGREEMENT AND DISCLAIMER:

The measured data in the provided downloadable LEDiL Product Datasheets and Mechanical 2D-Drawings is rounded and provided as reference for planning. LEDiL Oy's optical specifications have been verified by conducting performance testing of the products in accordance with the company's quality system. The reported data are averaged results of multiple measurements with typical variation. LEDiL Oy reserves the right to without prior notification make changes and improvements to its products.

LEDiL Oy assumes neither warranty, nor guarantee nor any other liability of any kind for the contents and correctness of the provided data. The provided data has been generated with highest diligence but the provided data may in reality not represent the complete possible variation range of all intrinsic parameters. Therefore, in certain cases a deviation from the provided data could occur.

LEDiL Oy reserves the right to undertake technical changes of its products without further notification which could lead to changes in the provided data. LEDiL Oy assumes no liability of any kind for the possible deviation from any provided data or any other damage resulting from the usage of the provided data.

The user agrees to this disclaimer and user agreement with the download or usage of the provided files.

LEDiL Oy

Joensuunkatu 13
FI-24240 SALO
Finland

LEDiL Inc.

228 West Page Street
Suite D
Sycamore IL 60178
USA

Local sales and technical support

[www.ledil.com/
where_to_buy](http://www.ledil.com/where_to_buy)

Shipping locations

Salo, Finland
Hong Kong, China

Distribution Partners

[www.ledil.com/
where_to_buy](http://www.ledil.com/where_to_buy)