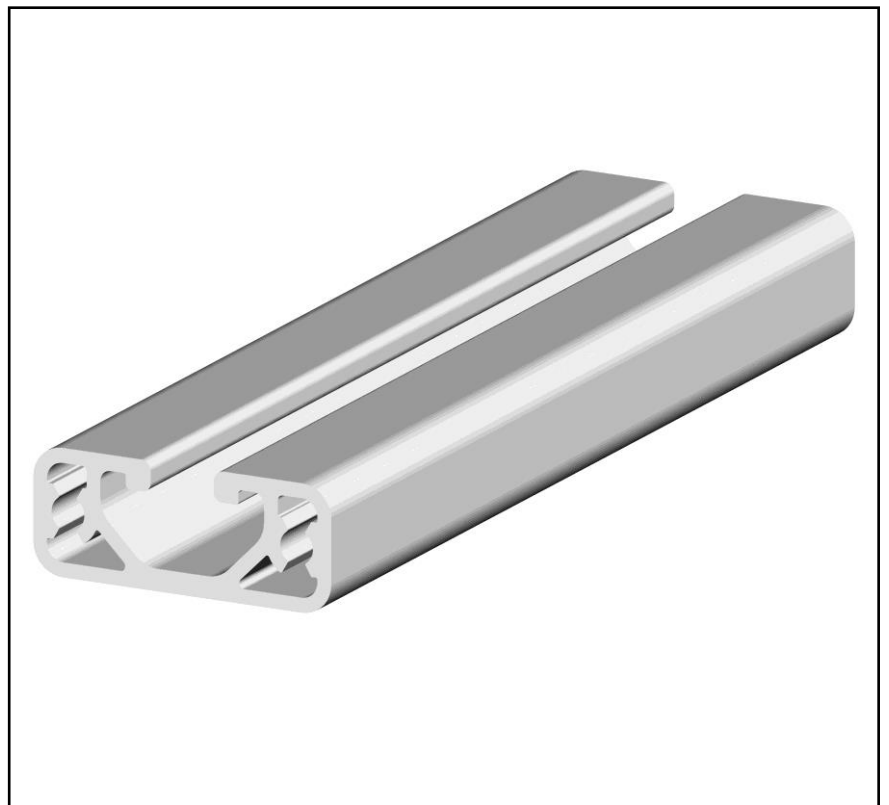


## Features

- Light-weight aluminium alloy
- Suitable for cut to length application
- Structural element type: Strut Profile
- Compatible with support and connector accessories

## RS PRO Strut Profile, 12x30 light, 6 mm Groove, 1000 mm Length

RS Stock No.: 0766829



RS Professionally Approved Products bring to you professional quality parts across all product categories. Our product range has been tested by engineers and provides a comparable quality to the leading brands without having a premium price.

## Product Description

RS PRO aluminum profiles offer a modular solution for building structures, frameworks and workstations.

Many components and connectors allow you to choose from a wide range of applications.

The modular system includes different profile types and lengths of 1 m, 2 m and 3 m with different cross-sections and groove-sizes in grid dimensions from 20 mm to 90 mm.

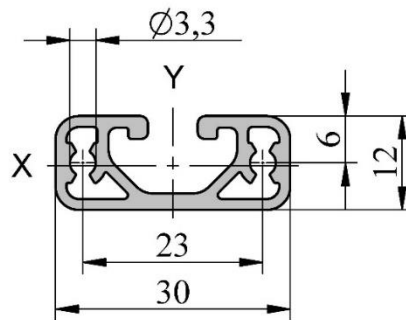
## General Specifications

|                                |  |
|--------------------------------|--|
| <b>Structural Element Type</b> | Strut Profile / Aluminium Profile  |
| <b>Number of Grooves</b>       | 1  |
| <b>Material</b>                | Aluminium anodized   |
| <b>Colour</b>                  | Silver   |
| <b>Product System</b>          | Construction, Workstations, Industrial equipment, Automotive manufacturing |

## Mechanical Specifications

|                                   |  |
|-----------------------------------|--|
| <b>Strut Profile</b>              | 12 x 30 mm                                   |
| <b>Length</b>                     | 1000 mm                                      |
| <b>Groove Size</b>                | 6 mm   |
| <b>Mass (G)</b>                   | 0.43 kg/m                                    |
| <b>Moment of Inertia (Ix, Iy)</b> | 0.26 cm <sup>4</sup><br>1.47 cm <sup>4</sup> |
| <b>Section Modulus (Wx, Wy)</b>   | 0.41 cm <sup>3</sup><br>0.98 cm <sup>3</sup> |

## Dimensional Drawing



## Similar Products

| Parameters   | 761-3293   | 761-3307   | 761-3316   | 761-3303   |
|--|--|--|--|--|
| Brand  | RS PRO   | RS PRO   | RS PRO   | RS PRO   |
| Structural Element Type                              | Strut Profile / Aluminium Profile  | Strut Profile / Aluminium Profile  | Strut Profile / Aluminium Profile  | Strut Profile / Aluminium Profile  |
| Number of Grooves                                    | 4  | 2  | 3  | 2  |
| Material   | Aluminium, anodized  | Aluminium, anodized  | Aluminium, anodized  | Aluminium, anodized  |
| Colour   | silver   | silver   | silver   | silver   |
| Product System                                       | Construction, Workstations, Industrial equipment, Automotive manufacturing | Construction, Workstations, Industrial equipment, Automotive manufacturing | Construction, Workstations, Industrial equipment, Automotive manufacturing | Construction, Workstations, Industrial equipment, Automotive manufacturing |
| Strut Profile  | 30 x 30 mm   | 30 x 30 mm   | 30 x 30 mm   | 30 x 30  |
| Length   | 3000 mm  | 2000 mm  | 2000 mm  | 2000 mm  |
| Groove Size  | 6  | 6  | 6  | 6  |
| Mass (G)   | 0.91 kg/m  | 0.94 kg/m  | 0.92 kg/m  | 0.94 kg/m  |
| Moment of Inertia (I <sub>x</sub> , I <sub>y</sub> ) | 2.88 cm <sup>4</sup>   | 3.02 cm <sup>4</sup>   | 3.02 cm <sup>4</sup>   | 2.89 cm <sup>4</sup>   |
| Section Modulus (W <sub>x</sub> , W <sub>y</sub> )   | 1.92 cm <sup>4</sup>   | 1.98 cm <sup>4</sup>   | 1.98 cm <sup>4</sup>   | 1.93 cm <sup>4</sup>   |