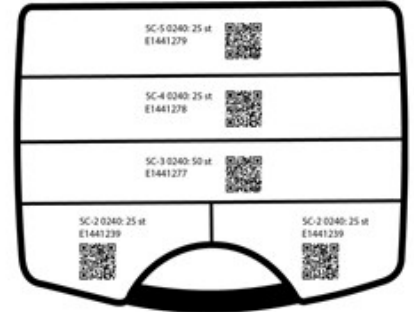




AS SC-2345 TL20



## AS SC-2345 TL20

Assortment Box ov 150pcs, Releasable, Splicing Connectors



### Product Properties:

|                               |       |
|-------------------------------|-------|
| Type of locking/unlocking     | Lever |
| Nominal voltage               | 450 V |
| Nominal current               | 32 A  |
| Suitable for solid conductors | Yes   |
| Transparent                   | Yes   |
| Number of clamp positions     | 2-5 . |
| With operation lever          | Yes   |
| Suitable for solid core       | Yes   |
| Suitable for flexible core    | Yes   |
| Suitable for multi-wire core  | Yes   |
| Colour                        | Green |

### Dimensions:

|               |    |
|---------------|----|
| Max. AWG-size | 12 |
|---------------|----|

|  |                       |
|--|-----------------------|
| Min. AWG-size  | Other                 |
| Nominal cross section (device side)                                  | 0.2-4 mm <sup>2</sup> |
| Nominal cross section (installation side)                            | 0.2-4 mm <sup>2</sup> |
| Cable diameter   | 1-4 mm                |
| Conductor cross section flexible (fine-strand) with cable end sleeve | 0.2-4 mm <sup>2</sup> |
| Conductor cross section solid (solid, stranded)                      | 0.2-4 mm <sup>2</sup> |
| Width  | 200 mm                |
| Height   | 41 mm                 |
| MOQ  | 1 .                   |
| Unit   | pcs                   |
| Nominal cross section  | 0.2-4 mm <sup>2</sup> |
| Length   | 225 mm                |
| Nominal voltage  | 450 V                 |

### **Approvals:**

|                          |     |
|--------------------------|-----|
| Approved according to CE | Yes |
|--------------------------|-----|

### **Compliance:**

|       |                               |
|-------|-------------------------------|
| REACH | No SVHC (Latest. 04 Feb 2026) |
| RoHS  | RoHS 3 (2015/863)             |
| SCIP  | Not Applicable                |

### **Other information:**

|                    |  |
|--------------------|--|
| ETIM-Class         | EC000446 - Screwless terminal          |
| ETIM-Release       | 9.0                                    |
| Trademark          | NEMIQ                                  |
| Product Group      | Splicing Connectors - Assortment Boxes |
| Search Description | SKV2024ERIK3                           |
| Alternative SKU    | ASSC-2345TL20                          |

### **Logistic information:**

|                   |  |
|-------------------|--|
| Barcode           | 733117641339   |
| Country of origin | CN   |
| Item status       | Stock item, normally in stock with reservation for in between sales. |
| MOQ               | 1 .  |
| Stock code        | AS SC-2345 TL20  |
| Taric code        | 85369010   |
| Unit              | pcs  |

\*We reserve the right to make technical changes and disclaim any typographical errors.

