

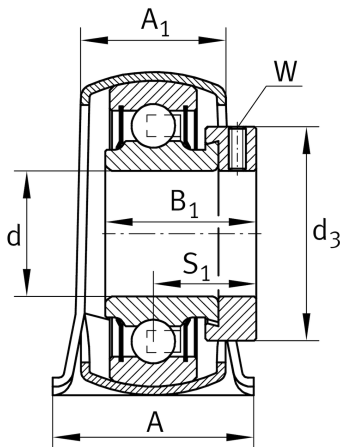
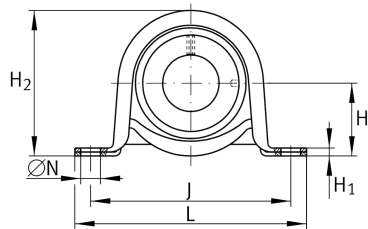
**PB25-XL**

Plummer block housing unit

Plummer block housing units PB, sheet steel housing, radial insert ball bearing with eccentric locking collar, P seals

X-life

Technical information



Your current product variant

Material	Steel sheet
----------	-------------

Main Dimensions & Performance Data

d	25 mm	Bore diameter
L	108 mm	Length total
H ₂	56.5 mm	Height
C _{0r G}	1,800 N	Load carrying capacity (housing)
C _r	14,000 N	Basic dynamic load rating, radial
C _{0r}	7,800 N	Basic static load rating, radial
≈m	0.315 kg	Weight

Mounting dimensions

J	86 mm	Distance fixing bore
N	11.5 mm	Fixing bore

Dimensions

H	28.6 mm	Distance shaft axis
A	31.8 mm	Width (base)
A ₁	23.5 mm	Width (head)
H ₁	4 mm	Height (base)



Additional information

f ₀	13.8	Calculation factor
	GEH52-BT	Housing
	RAE25-XL-NPP-B	Bearing designation

Temperature range

T _{min}	-20 °C	Operating temperature min.
T _{max}	120 °C	Operating temperature max.