

# ME-IO 18,8-KIT-9U-54-TBUS-7035 - Housing set



1342351

<https://www.phoenixcontact.com/in/products/1342351>

Please be informed that the data shown in this PDF document is generated from our online catalog. Please find the complete data in the user documentation. Our general terms of use for downloads are valid.



DIN rail housing, with front connection for DIN rail mounting, color: light gray (similar RAL 7035), width: 18.9 mm, height: 113.3 mm, depth: 76.5 mm, incl. 9 front connection terminal blocks, 6-pos., Push-in, for 1.5 mm<sup>2</sup>, nominal current: 8 A, 160 V, PCB surface: 5900 mm<sup>2</sup>

## Your advantages

- Easy, tool-free mounting
- Optional DIN rail connector for easy module-to-module communication
- Lock and Release principle for automatic latching and intuitive release of the front connection plug
- Plastic in accordance with UL94 V0: for more rigorous flammability requirements
- Plug-in front connection technology

## Commercial data

Item number	1342351
Packing unit	1 pc
Minimum order quantity	1 pc
Sales key	*****
Product key	ACHEBK
GTIN	4063151652159
Weight per piece (including packing)	101.3 g
Weight per piece (excluding packing)	101.3 g
Customs tariff number	85369010
Country of origin	DE

# ME-IO 18,8-KIT-9U-54-TBUS-7035 - Housing set



1342351

<https://www.phoenixcontact.com/in/products/1342351>

## Set consists of

### ME-IO 18,8 B/FE 9U TBUS 7035 - Mounting base housing

2201809

<https://www.phoenixcontact.com/in/products/2201809>



DIN rail housing, Lower housing part, with metal foot catch, with functional ground contact, with vents, width: 18.9 mm, height: 109.6 mm, depth: 64.3 mm, color: light gray (similar RAL 7035), cross connection: DIN rail connector (optional), number of positions cross connector: 5

---

### HSC-LR 9U KIT 2003 - Locking

2201794

<https://www.phoenixcontact.com/in/products/2201794>



DIN rail housing, 9U, Lock and Release system, width: 16.1 mm, height: 111.8 mm, depth: 8.8 mm, color: orange (similar RAL 2003)

# ME-IO 18,8-KIT-9U-54-TBUS-7035 - Housing set



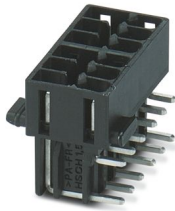
1342351

<https://www.phoenixcontact.com/in/products/1342351>

## HSCH 1,5-2U/12 9005 - PCB header

2202233

<https://www.phoenixcontact.com/in/products/2202233>



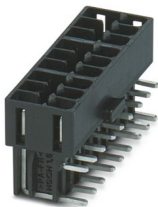
PCB headers, nominal cross section: 1.5 mm<sup>2</sup>, color: black, nominal current: 8 A, rated voltage (III/2): 160 V, contact surface: Sn, contact connection type: Pin, number of potentials: 12, number of rows: 2, number of positions: 12, number of connections: 12, product range: HSCH 1,5/...-G, pitch: 3.45 mm, mounting: Wave soldering, pin layout: Linear pinning, solder pin [P]: 3.8 mm, number of solder pins per potential: 1, plug-in system: HSC 1,5, Pin connector pattern alignment: Standard, locking: without, mounting method: without, type of packaging: packed in cardboard

---

## HSCH 1,5-3U/18 9005 - PCB header

2202232

<https://www.phoenixcontact.com/in/products/2202232>



PCB headers, nominal cross section: 1.5 mm<sup>2</sup>, color: black, nominal current: 8 A, rated voltage (III/2): 160 V, contact surface: Sn, contact connection type: Pin, number of potentials: 18, number of rows: 2, number of positions: 18, number of connections: 18, product range: HSCH 1,5/...-G, pitch: 3.45 mm, mounting: Wave soldering, pin layout: Linear pinning, solder pin [P]: 3.8 mm, number of solder pins per potential: 1, plug-in system: HSC 1,5, Pin connector pattern alignment: Standard, locking: without, mounting method: without, type of packaging: packed in cardboard

# ME-IO 18,8-KIT-9U-54-TBUS-7035 - Housing set



1342351

<https://www.phoenixcontact.com/in/products/1342351>

## HSCP-SP 1,5-1U6-7035 - PCB connector

2202234

<https://www.phoenixcontact.com/in/products/2202234>



PCB connector, nominal cross section: 1.5 mm<sup>2</sup>, color: light gray, nominal current: 8 A, rated voltage (III/2): 160 V, contact surface: Sn, contact connection type: Socket, number of potentials: 6, number of rows: 2, number of positions: 6, number of connections: 6, product range: HSCP-SP 1,5-..., pitch: 3.45 mm, connection method: Push-in spring connection, conductor/PCB connection direction: 0 °, locking clip: - Locking clip, plug-in system: HSC 1,5, locking: without, mounting method: without, type of packaging: packed in cardboard, Color of the spring lever: orange

## Technical data

### Notes

Assembly note	Please observe the assembly instructions available in the download area.
Recommendation	Material of contact pads for bus connector, galvanic gold (hard gold)
General	The PCB surface specification is for orientation purposes and is based on a basic PCB. The housing can also accommodate several PCBs.

### Product properties

Product type	Stackable housing set
Housing type	DIN rail housing
Housing series	ME-IO
Number of positions	54
Max. number of positions	54 (pitch: 3.45 mm)
Type	with front connection for DIN rail mounting incl. 9 front connection terminal blocks, 6-pos., Push-in, for 1.5 mm <sup>2</sup> , nominal current: 8 A, 160 V
Ventilation openings present	yes

### Connection data

Connection method	Push-in spring connection
-------------------	---------------------------

### Dimensions

Width	18.9 mm
Height	113.3 mm
Depth	76.5 mm
Depth from top edge of DIN rail	70 mm

#### PCB design

PCB thickness	1.4 mm ... 1.8 mm
---------------	-------------------

### Material specifications

Color (Housing)	light gray (RAL 7035)
Color (Actuating element)	orange (RAL 2003)
Flammability rating according to UL 94	V0
Housing material	PA
Surface characteristics	untreated

### Environmental and real-life conditions

#### Ambient conditions

Max. IP code to attain	IP20
Ambient temperature (operation)	-40 °C ... 105 °C (depending on power dissipation)

# ME-IO 18,8-KIT-9U-54-TBUS-7035 - Housing set



1342351

<https://www.phoenixcontact.com/in/products/1342351>

Ambient temperature (storage/transport)	-40 °C ... 55 °C
Ambient temperature (assembly)	-5 °C ... 100 °C
Relative humidity (storage/transport)	max. 80 %

## PCB data

Number of PCB holders	1
Type of PCB mount	Latching
Total PCB surface	5900 mm <sup>2</sup>
Thickness of the PCB	1.4 mm ... 1.8 mm

## Mounting

Mounting type	DIN rail mounting
---------------	-------------------

## Packaging specifications

Type of packaging	packed in cardboard
Outer packaging type	Carton

# ME-IO 18,8-KIT-9U-54-TBUS-7035 - Housing set



1342351

<https://www.phoenixcontact.com/in/products/1342351>

## Classifications

### ECLASS

ECLASS-11.0	27182702
ECLASS-13.0	27190301

### ETIM

ETIM 9.0	EC001031
----------	----------

# ME-IO 18,8-KIT-9U-54-TBUS-7035 - Housing set



1342351

<https://www.phoenixcontact.com/in/products/1342351>

## Environmental product compliance

### EU RoHS

Fulfills EU RoHS substance requirements	Yes, No exemptions
---	--------------------

### China RoHS

Environment friendly use period (EFUP)	EFUP-E
	No hazardous substances above the limits

### EU REACH SVHC

REACH candidate substance (CAS No.)	No substance above 0.1 wt%
-------------------------------------	----------------------------

Phoenix Contact 2025 © - all rights reserved  
<https://www.phoenixcontact.com>

PHOENIX CONTACT (I) Pvt. Ltd.  
A-58/2, Okhla Industrial Area, Phase - II, New Delhi-110 020

+91.1275.71420  
[info@phoenixcontact.co.in](mailto:info@phoenixcontact.co.in)