

NBC-R4OC/30,0-BC6A/R4OC - Patch cable



1367336

<https://www.phoenixcontact.com/in/products/1367336>

Please be informed that the data shown in this PDF document is generated from our online catalog. Please find the complete data in the user documentation. Our general terms of use for downloads are valid.



Patch cable, degree of protection: IP20, cable length: 30 m, number of positions: 8, 10 Gbps, CAT6_A, connection method: Pierce connection, connection cross section: AWG 26- 26, cable outlet: straight, Ethernet

Your advantages

- Perfect for office, building, and protected industrial applications (e.g., in control cabinets)
- Worldwide approval with CE, UL, WEEE, and EAC
- Secure connection and disconnection with reliable locking clip protection
- Ideal EMC properties, thanks to 360° shielding
- Simultaneous power transmission with PoE++
- Future-proof high-speed data transmission with up to 10 Gbps (CAT6_A)

Commercial data

Item number	1367336
Packing unit	1 pc
Minimum order quantity	10 pc
Sales key	ABN
Product key	ABNABH
GTIN	4063151720469
Weight per piece (including packing)	1,544 g
Weight per piece (excluding packing)	1,485.8 g
Customs tariff number	85444210
Country of origin	CN

NBC-R4OC/30,0-BC6A/R4OC - Patch cable



1367336

<https://www.phoenixcontact.com/in/products/1367336>

Technical data

Product properties

Product type	Data cable preassembled
Product family	RJ45 STANDARD CAT6A
Sensor type	Ethernet
Number of positions	8
Shielded	yes
Cable outlet	straight

Insulation characteristics

Overvoltage category	I
Degree of pollution	2

Electrical properties

Rated voltage (III/2)	72 V
Transmission medium	Copper
Transmission characteristics (category)	CAT6 _A
Transmission speed	10 Gbps
Power transmission	PoE++

Mechanical properties

Mechanical data

Insertion force per signal contact	30.00 N
Extraction force per signal contact	50 N

Material specifications

Flammability rating according to UL 94	V0
Contact material	Brass
Contact surface material	Au
Contact carrier material	PC
Outer sheath, material	LSZH

Dimensions

Width	11.6 mm
Height	14.8 mm
Length	40 mm

Connection data

Connection technology

Connection method	Pierce connection
-------------------	-------------------

Conductor connection

Connection method	Pierce connection
-------------------	-------------------

NBC-R4OC/30,0-BC6A/R4OC - Patch cable



1367336

<https://www.phoenixcontact.com/in/products/1367336>

Connector

Connection 1

Type	Plug straight RJ45
Shielded	yes
Handle color	gray
Insertion/withdrawal cycles	≥ 750
Degree of protection	IP20
Ambient temperature (operation)	-20 °C ... 80 °C

Connection 2

Type	Plug straight RJ45
Shielded	yes
Handle color	gray
Insertion/withdrawal cycles	≥ 750
Degree of protection	IP20
Ambient temperature (operation)	-20 °C ... 80 °C

Cable/line

Cable length	30.00 m
--------------	---------

Ethernet, Type B, 8-pos., CAT6A, LSZH [BC6A]

Number of positions	8
Shielded	yes
Cable type	Ethernet, Type B, 8-pos., CAT6A, LSZH [BC6A]
Conductor structure	4x2xAWG26/7; S/FTP
Conductor structure signal line	7x 0.16 mm
AWG signal line	26
Wire diameter incl. insulation	1 mm
External cable diameter	6.50 mm ±0.3 mm
Outer sheath, material	LSZH
External sheath, color	gray
Conductor material	Bare Cu litz wires
Material wire insulation	PE
Single wires, quantity	8
Single wire, cross section [AWG]	26
Thickness, outer sheath	approx. 0.70 mm
Optical shield covering	70 %
Insulation resistance	≥ 5000 MΩ*km
Loop resistance	≤ 148.00 Ω/km
Wave impedance	100 Ω
Minimum bending radius, fixed installation	8 x D
Smallest bending radius, fixed installation	52 mm
Near end crosstalk attenuation (NEXT)	75 dB (with 1 MHz) 66.3 dB (at 4 MHz)

NBC-R4OC/30,0-BC6A/R4OC - Patch cable



1367336

<https://www.phoenixcontact.com/in/products/1367336>

	60.3 dB (at 10 MHz)
	57.2 dB (at 16 MHz)
	55.8 dB (at 20 MHz)
	52.9 dB (at 31.25 MHz)
	48.4 dB (at 62.5 MHz)
	45.3 dB (at 100 MHz)
	40.8 dB (at 200 MHz)
	38.1 dB (at 300 MHz)
	36.3 dB (at 400 MHz)
	34.8 dB (at 500 MHz)
Power-summated near end crosstalk attenuation (PSNEXT)	72.3 dB (with 1 MHz)
	63.3 dB (at 4 MHz)
	58.8 dB (at 8 MHz)
	57.3 dB (at 10 MHz)
	54.2 dB (at 16 MHz)
	52.8 dB (at 20 MHz)
	51.3 dB (at 25 MHz)
	49.9 dB (at 31.25 MHz)
	45.4 dB (at 62.5 MHz)
	42.3 dB (at 100 MHz)
	37.8 dB (at 200 MHz)
	35.1 dB (at 300 MHz)
	33.3 dB (at 400 MHz)
	31.8 dB (at 500 MHz)
Return attenuation (RL)	20 dB (with 1 MHz)
	23 dB (at 4 MHz)
	24.5 dB (at 8 MHz)
	25 dB (at 10 MHz)
	25 dB (at 16 MHz)
	25 dB (at 20 MHz)
	24.2 dB (at 25 MHz)
	23.3 dB (at 31.25 MHz)
	20.7 dB (at 62.5 MHz)
	19 dB (at 100 MHz)
	16.4 dB (at 200 MHz)
	15.6 dB (at 300 MHz)
	15.6 dB (at 400 MHz)
	15.6 dB (at 500 MHz)
Shield attenuation	3.1 dB (with 1 MHz)
	5.7 dB (at 4 MHz)
	8.9 dB (at 10 MHz)
	11.2 dB (at 16 MHz)
	12.6 dB (at 20 MHz)
	15.8 dB (at 31.25 MHz)

NBC-R4OC/30,0-BC6A/R4OC - Patch cable



1367336

<https://www.phoenixcontact.com/in/products/1367336>

	22.5 dB (at 62.5 MHz)
	28.7 dB (at 100 MHz)
	41.4 dB (at 200 MHz)
	51.4 dB (at 300 MHz)
	60.1 dB (at 400 MHz)
	67.9 dB (at 500 MHz)
Halogen-free	complying with IEC 60754-1/2
Flame resistance	IEC 60332-1-2/IEC 60332-3-24/CM
Ambient temperature (operation)	-20 °C ... 80 °C (cable, fixed installation)
	-20 °C ... 80 °C (Cable, flexible installation)
Ambient temperature (installation)	0 °C ... 60 °C

Environmental and real-life conditions

Ambient conditions

Degree of protection	IP20
Ambient temperature (operation)	-20 °C ... 80 °C
Ambient temperature (storage/transport)	0 °C ... 40 °C

Standards and regulations

Flame resistance	IEC 60332-1-2
------------------	---------------

NBC-R4OC/30,0-BC6A/R4OC - Patch cable



1367336

<https://www.phoenixcontact.com/in/products/1367336>

Approvals

To download certificates, visit the product detail page: <https://www.phoenixcontact.com/in/products/1367336>



EAC

Approval ID: 19060508



UL Listed

Approval ID: E335024_20210804



cUL Listed

Approval ID: E335024_20210804

cULus Listed

NBC-R4OC/30,0-BC6A/R4OC - Patch cable



1367336

<https://www.phoenixcontact.com/in/products/1367336>

Classifications

ECLASS

ECLASS-11.0	27060308
ECLASS-12.0	27060308
ECLASS-13.0	27060307

ETIM

ETIM 9.0	EC001855
----------	----------

NBC-R4OC/30,0-BC6A/R4OC - Patch cable



1367336

<https://www.phoenixcontact.com/in/products/1367336>

Environmental product compliance

EU RoHS	
Fulfills EU RoHS substance requirements	Yes, No exemptions
China RoHS	
Environment friendly use period (EFUP)	EFUP-E
	No hazardous substances above the limits
EU REACH SVHC	
REACH candidate substance (CAS No.)	No substance above 0.1 wt%

NBC-R4OC/30,0-BC6A/R4OC - Patch cable

1367336

<https://www.phoenixcontact.com/in/products/1367336>

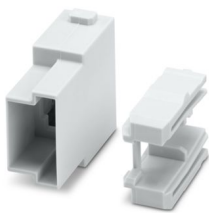


Accessories

HC-M-RJ45-AD-PC2-M - Contact insert module

1435214

<https://www.phoenixcontact.com/in/products/1435214>



Contact insert module, adapter for patch cables, the matching patch cables can be found in the accessories list

NBC-R4OC/0,3-BC6A/R4OC - Patch cable

1227572

<https://www.phoenixcontact.com/in/products/1227572>



Patch cable, degree of protection: IP20, cable length: 0.3 m, number of positions: 8, 10 Gbps, CAT6_A, connection method: Pierce connection, connection cross section: AWG 26- 26, cable outlet: straight, Ethernet

NBC-R4OC/30,0-BC6A/R4OC - Patch cable

1367336

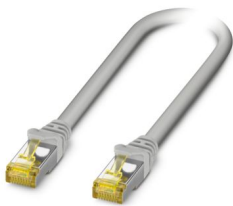
<https://www.phoenixcontact.com/in/products/1367336>



NBC-R4OC/0,5-BC6A/R4OC - Patch cable

1227573

<https://www.phoenixcontact.com/in/products/1227573>



Patch cable, degree of protection: IP20, cable length: 0.5 m, number of positions: 8, 10 Gbps, CAT6_A, connection method: Pierce connection, connection cross section: AWG 26- 26, cable outlet: straight, Ethernet

NBC-R4OC/1,0-BC6A/R4OC - Patch cable

1227575

<https://www.phoenixcontact.com/in/products/1227575>



Patch cable, degree of protection: IP20, cable length: 1 m, number of positions: 8, 10 Gbps, CAT6_A, connection method: Pierce connection, connection cross section: AWG 26- 26, cable outlet: straight, Ethernet

NBC-R4OC/30,0-BC6A/R4OC - Patch cable

1367336

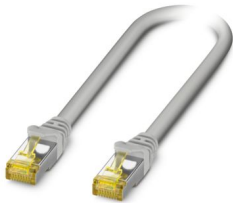
<https://www.phoenixcontact.com/in/products/1367336>



NBC-R4OC/1,5-BC6A/R4OC - Patch cable

1227578

<https://www.phoenixcontact.com/in/products/1227578>



Patch cable, degree of protection: IP20, cable length: 1.5 m, number of positions: 8, 10 Gbps, CAT6_A, connection method: Pierce connection, connection cross section: AWG 26- 26, cable outlet: straight, Ethernet

NBC-R4OC/2,0-BC6A/R4OC - Patch cable

1227580

<https://www.phoenixcontact.com/in/products/1227580>



Patch cable, degree of protection: IP20, cable length: 2 m, number of positions: 8, 10 Gbps, CAT6_A, connection method: Pierce connection, connection cross section: AWG 26- 26, cable outlet: straight, Ethernet

NBC-R4OC/30,0-BC6A/R4OC - Patch cable

1367336

<https://www.phoenixcontact.com/in/products/1367336>



NBC-R4OC/3,0-BC6A/R4OC - Patch cable

1227581

<https://www.phoenixcontact.com/in/products/1227581>



Patch cable, degree of protection: IP20, cable length: 3 m, number of positions: 8, 10 Gbps, CAT6_A, connection method: Pierce connection, connection cross section: AWG 26- 26, cable outlet: straight, Ethernet

NBC-R4OC/5,0-BC6A/R4OC - Patch cable

1227583

<https://www.phoenixcontact.com/in/products/1227583>



Patch cable, degree of protection: IP20, cable length: 5 m, number of positions: 8, 10 Gbps, CAT6_A, connection method: Pierce connection, connection cross section: AWG 26- 26, cable outlet: straight, Ethernet

NBC-R4OC/30,0-BC6A/R4OC - Patch cable

1367336

<https://www.phoenixcontact.com/in/products/1367336>



NBC-R4OC/7,5-BC6A/R4OC - Patch cable

1227585

<https://www.phoenixcontact.com/in/products/1227585>



Patch cable, degree of protection: IP20, cable length: 7.5 m, number of positions: 8, 10 Gbps, CAT6_A, connection method: Pierce connection, connection cross section: AWG 26- 26, cable outlet: straight, Ethernet

NBC-R4OC/10,0-BC6A/R4OC - Patch cable

1227588

<https://www.phoenixcontact.com/in/products/1227588>



Patch cable, degree of protection: IP20, cable length: 10 m, number of positions: 8, 10 Gbps, CAT6_A, connection method: Pierce connection, connection cross section: AWG 26- 26, cable outlet: straight, Ethernet

NBC-R4OC/30,0-BC6A/R4OC - Patch cable

1367336

<https://www.phoenixcontact.com/in/products/1367336>



NBC-R4OC/0,3-BC5/R4OC - Patch cable

1227558

<https://www.phoenixcontact.com/in/products/1227558>



Patch cable, degree of protection: IP20, cable length: 0.3 m, number of positions: 8, CAT5, connection method: Pierce connection, connection cross section: AWG 26- 26, cable outlet: straight, Ethernet

NBC-R4OC/0,5-BC5/R4OC - Patch cable

1227559

<https://www.phoenixcontact.com/in/products/1227559>



Patch cable, degree of protection: IP20, cable length: 0.5 m, number of positions: 8, CAT5, connection method: Pierce connection, connection cross section: AWG 26- 26, cable outlet: straight, Ethernet

NBC-R4OC/30,0-BC6A/R4OC - Patch cable

1367336

<https://www.phoenixcontact.com/in/products/1367336>



NBC-R4OC/1,0-BC5/R4OC - Patch cable

1227560

<https://www.phoenixcontact.com/in/products/1227560>



Patch cable, degree of protection: IP20, cable length: 1 m, number of positions: 8, CAT5, connection method: Pierce connection, connection cross section: AWG 26- 26, cable outlet: straight, Ethernet

NBC-R4OC/1,5-BC5/R4OC - Patch cable

1227561

<https://www.phoenixcontact.com/in/products/1227561>



Patch cable, degree of protection: IP20, cable length: 1.5 m, number of positions: 8, CAT5, connection method: Pierce connection, connection cross section: AWG 26- 26, cable outlet: straight, Ethernet

NBC-R4OC/30,0-BC6A/R4OC - Patch cable

1367336

<https://www.phoenixcontact.com/in/products/1367336>



NBC-R4OC/2,0-BC5/R4OC - Patch cable

1227562

<https://www.phoenixcontact.com/in/products/1227562>



Patch cable, degree of protection: IP20, cable length: 2 m, number of positions: 8, CAT5, connection method: Pierce connection, connection cross section: AWG 26- 26, cable outlet: straight, Ethernet

NBC-R4OC/3,0-BC5/R4OC - Patch cable

1227563

<https://www.phoenixcontact.com/in/products/1227563>



Patch cable, degree of protection: IP20, cable length: 3 m, number of positions: 8, CAT5, connection method: Pierce connection, connection cross section: AWG 26- 26, cable outlet: straight, Ethernet

NBC-R4OC/30,0-BC6A/R4OC - Patch cable

1367336

<https://www.phoenixcontact.com/in/products/1367336>



NBC-R4OC/5,0-BC5/R4OC - Patch cable

1227564

<https://www.phoenixcontact.com/in/products/1227564>



Patch cable, degree of protection: IP20, cable length: 5 m, number of positions: 8, CAT5, connection method: Pierce connection, connection cross section: AWG 26- 26, cable outlet: straight, Ethernet

NBC-R4OC/7,5-BC5/R4OC - Patch cable

1227565

<https://www.phoenixcontact.com/in/products/1227565>



Patch cable, degree of protection: IP20, cable length: 7.5 m, number of positions: 8, CAT5, connection method: Pierce connection, connection cross section: AWG 26- 26, cable outlet: straight, Ethernet

NBC-R4OC/30,0-BC6A/R4OC - Patch cable

1367336

<https://www.phoenixcontact.com/in/products/1367336>



NBC-R4OC/10,0-BC5/R4OC - Patch cable

1227566

<https://www.phoenixcontact.com/in/products/1227566>



Patch cable, degree of protection: IP20, cable length: 10 m, number of positions: 8, CAT5, connection method: Pierce connection, connection cross section: AWG 26- 26, cable outlet: straight, Ethernet

Phoenix Contact 2025 © - all rights reserved

<https://www.phoenixcontact.com>

PHOENIX CONTACT (I) Pvt. Ltd.

A-58/2, Okhla Industrial Area, Phase - II, New Delhi-110 020

+91.1275.71420

info@phoenixcontact.co.in