

HC-STA-D07-BWS-M25-PL-BK - Housing

1672258

<https://www.phoenixcontact.com/in/products/1672258>



Please be informed that the data shown in this PDF document is generated from our online catalog. Please find the complete data in the user documentation. Our general terms of use for downloads are valid.



Screw-in housing D7, with single locking latch, material: PA, height: 52.5 mm, seal: yes, Standard

Commercial data

Item number	1672258
Packing unit	1 pc
Minimum order quantity	1 pc
Product key	AF7APD
GTIN	4067923220485
Weight per piece (including packing)	22.8 g
Weight per piece (excluding packing)	222 g
Country of origin	CN

HC-STA-D07-BWS-M25-PL-BK - Housing



1672258

<https://www.phoenixcontact.com/in/products/1672258>

Technical data

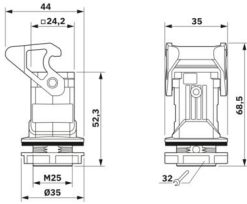
Notes

General	for contact inserts HC-A03, A04, D07, D08, Q02, Q03, Q04, Q05, Q07, Q12
---------	---

Product properties

Product type	Housing with locking latch
Housing type	Screw-in housing
Application	Standard
Type	D7
Seal present	yes
Shielded	no

Dimensions

Dimensional drawing	
Height	52.5 mm
Thread pitch	1.5 mm

Material specifications

Flammability rating according to UL 94	V0 (Housing) V0 (Interlock)
Seal material	NBR
Housing material	PA
Locking latch material	PA

Mechanical properties

Mechanical data	
Locking type	Latch

Connection data

Tightening torque	5 Nm ... 7.5 Nm
-------------------	-----------------

Mounting

Assembly note	To ensure anti-rotation protection of the housing, use the attached mounting cutout. Alternatively, you can use a consistently round panel cutout. However, this cutout cannot guarantee anti-rotation protection.
---------------	--

HC-STA-D07-BWS-M25-PL-BK - Housing

1672258

<https://www.phoenixcontact.com/in/products/1672258>



Environmental and real-life conditions

Ambient conditions

Degree of protection	IP66
Impact strength	IK06
Ambient temperature (operation)	-40 °C ... 125 °C

HC-STA-D07-BWS-M25-PL-BK - Housing

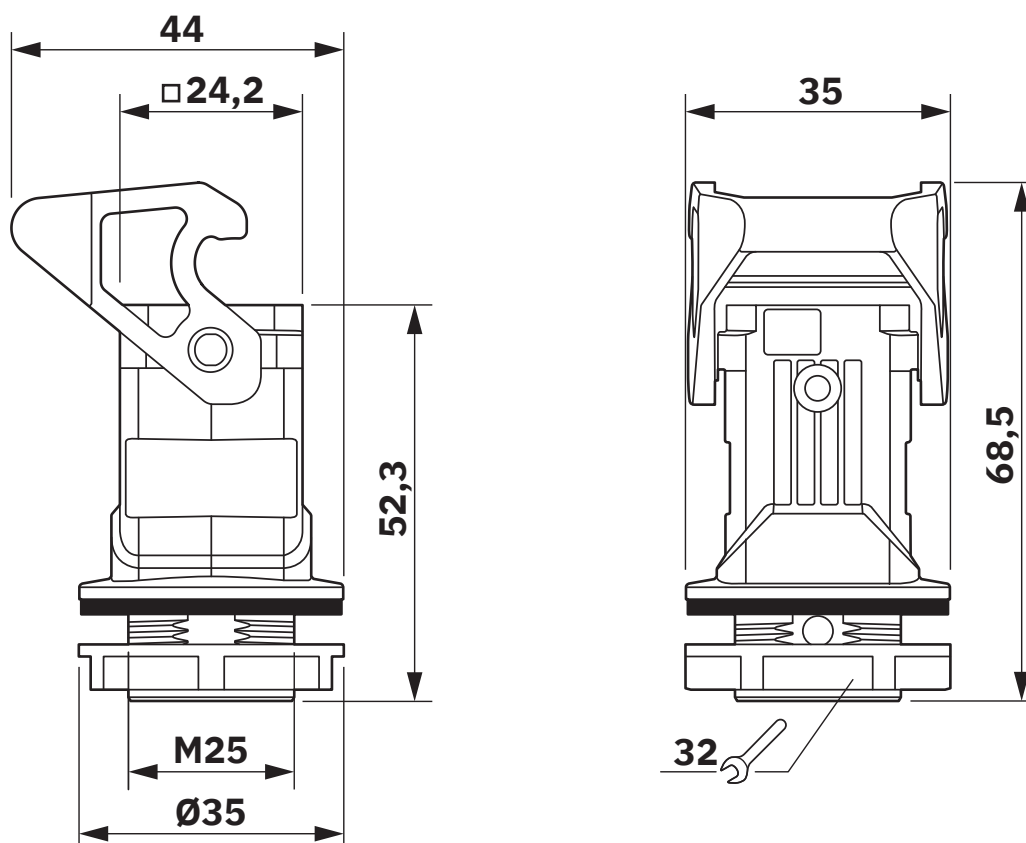
1672258

<https://www.phoenixcontact.com/in/products/1672258>



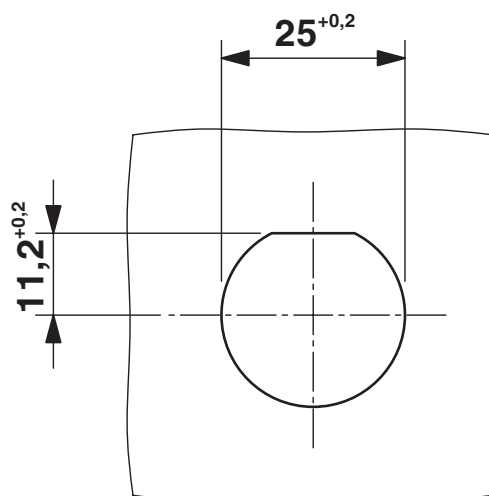
Drawings

Dimensional drawing



Dimensional drawing

Dimensional drawing



Panel cutout

HC-STA-D07-BWS-M25-PL-BK - Housing

1672258

<https://www.phoenixcontact.com/in/products/1672258>



Classifications

ECLASS

ECLASS-11.0	27440202
ECLASS-13.0	27440202

ETIM

ETIM 9.0	EC000437
----------	----------

HC-STA-D07-BWS-M25-PL-BK - Housing



1672258

<https://www.phoenixcontact.com/in/products/1672258>

Environmental product compliance

EU RoHS	
Fulfills EU RoHS substance requirements	Yes, No exemptions
China RoHS	
Environment friendly use period (EFUP)	EFUP-E
	No hazardous substances above the limits
EU REACH SVHC	
REACH candidate substance (CAS No.)	No substance above 0.1 wt%

HC-STA-D07-BWS-M25-PL-BK - Housing



1672258

<https://www.phoenixcontact.com/in/products/1672258>

Accessories

US-EMLP (20X9) CUS - Plastic label

0830085

<https://www.phoenixcontact.com/in/products/0830085>

Plastic label, Card, can be ordered: by card, white, labeled according to customer specifications, mounting type: adhesive, Number of individual labels: 75, text field height: 9 mm, text field width: 20 mm



HC-D07-SL-PLBK - Housing brackets

1424440

<https://www.phoenixcontact.com/in/products/1424440>

Replacement latch for HC-D7 housing



HC-STA-D07-BWS-M25-PL-BK - Housing

1672258

<https://www.phoenixcontact.com/in/products/1672258>



UNIFOX-WRENCH - Screw pliers

1212835

<https://www.phoenixcontact.com/in/products/1212835>



Screw pliers, with fast adjustment, for wrench size 10 mm ... 36 mm, size: 260 mm

Phoenix Contact 2025 © - all rights reserved

<https://www.phoenixcontact.com>

PHOENIX CONTACT (I) Pvt. Ltd.

A-58/2, Okhla Industrial Area, Phase - II, New Delhi-110 020

+91.1275.71420

info@phoenixcontact.co.in