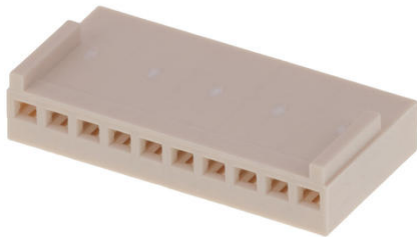




Part Number : [22011102](#)
Product Description : 2.50mm Pitch KK Wire-to-Board Housing, Female, Friction Lock, for 2759/5159 Crimp Terminals, 10 Circuits
Series Number : 5051
Status : Not Recommended For New Design
Product Category : Connector Housings
Engineering Number : 5051-10



Documents & Resources

Drawings


[022011102 sd.pdf](#)
[022011102 stp.zip](#)

Specifications

[SPK-5051-001-001.pdf](#)
[PS-5045-001-001.pdf](#)
[PS-5045-002-001.pdf](#)
[PS-5045-003-001.pdf](#)
[PS-5045-004-001.pdf](#)
[50510002-PS-000.pdf](#)
[PS-5051-005-001.pdf](#)
[PS-5051-006-001.pdf](#)
[PS-5102-004-001.pdf](#)

Product Environment Compliance

Compliance

GADSL/IMDS	Not Relevant
China RoHS	 per SJ/T 11365-2006
EU ELV	Not Relevant
Low-Halogen Status	Low-Halogen per IEC 61249-2-21
REACH SVHC	Not Contained per D(2025)4165-DC (25 June 2025)

EU RoHS	Compliant per EU 2015/863
---------	---------------------------

Compliance Statements

- EU RoHS
- REACH SVHC
- Low-Halogen

Industry Documents

- IPC 1752A Class C
- IPC 1752A Class D
- Molex Product Compliance Declaration
- IEC-62474
- chemSHERPA (xml)

Substances of Interest

- PFAS

EU RoHS Certificate of Compliance

Additional Product Compliance Information

Part Details

General

Status	Not Recommended For New Design
Category	Connector Housings
Series	5051
Description	2.50mm Pitch KK Wire-to-Board Housing, Female, Friction Lock, for 2759/5159 Crimp Terminals, 10 Circuits
Application	Signal, Wire-to-Board
Product Name	KK
UPC	800753594029

Agency

UL	E29179
----	--------

Physical

Circuits (maximum)	10
Color - Resin	Natural
Flammability	94V-0

Gender	Receptacle
Glow-Wire Capable	No
Material - Resin	Nylon
Net Weight	1230.300/mg
Number of Rows	1
Packaging Type	Bag
Panel Mount	No
Pitch - Mating Interface	2.50mm
Stackable	No
Temperature Range - Operating	-40° to +105°C

Mates With / Use With

Mates with Part(s)

Description	Part Number
Mini-Latch / KK Single Row Vertical Headers	<u>5045</u>
Mini-Latch / KK Single Row Right-Angle Headers	<u>5046</u>

Use with Part(s)

Description	Part Number
Pre-Crimped Lead KK 254 Female-to-KK 254 Female, Tin (Sn) Plating, 150.00mm Length, 22 AWG, Black	<u>797580007</u>
Pre-Crimped Lead KK 254 Female-to-KK 254 Female, Tin (Sn) Plating, 300.00mm Length, 22 AWG, Black	<u>797580015</u>
KK 254 Female Crimp Terminals	<u>2759</u>
KK Cat Ear Female Crimp Terminals	<u>5159</u>