

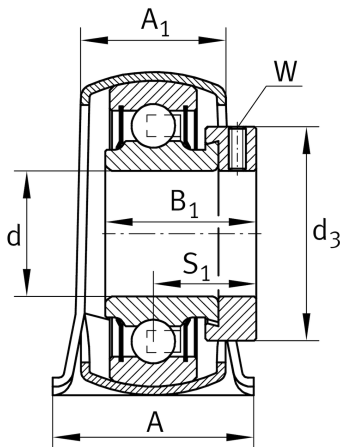
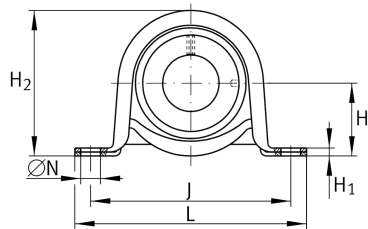
**PB12-XL**

## Plummer block housing unit

Plummer block housing units PB, sheet steel housing, radial insert ball bearing with eccentric locking collar, P seals

**X-life**

## Technical information



## Your current product variant

Material	Steel sheet
----------	-------------

## Main Dimensions &amp; Performance Data

d	12 mm	Bore diameter
L	85.7 mm	Length total
H <sub>2</sub>	43.2 mm	Height
C <sub>0r G</sub>	1,350 N	Load carrying capacity (housing)
C <sub>r</sub>	9,800 N	Basic dynamic load rating, radial
C <sub>0r</sub>	4,750 N	Basic static load rating, radial
≈m	0.17 kg	Weight

## Mounting dimensions

J	68 mm	Distance fixing bore
N	9.5 mm	Fixing bore

## Dimensions

H	22.2 mm	Distance shaft axis
A	25.4 mm	Width (base)
A <sub>1</sub>	18.4 mm	Width (head)
H <sub>1</sub>	2.6 mm	Height (base)



Additional information

f <sub>0</sub>	13	Calculation factor
	GEH40-BT	Housing
	RAE12-XL-NPP-B	Bearing designation

Temperature range

T <sub>min</sub>	-20 °C	Operating temperature min.
T <sub>max</sub>	120 °C	Operating temperature max.