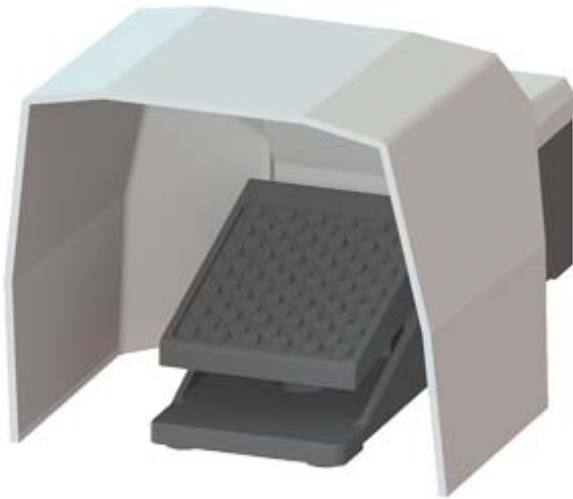


FOOT -OPERATED BUTTON, (WITHOUT LATCHING) SINGLE PEDAL, M20X1,5 CABLE ENTRY IP65, 1NO + 1NC WITH COVER



| | |
|---|-------------------------------|
| Product designation | momentary-contact foot switch |
| General technical data: | |
| Protection class IP | IP65 |
| Equipment marking | |
| • acc. to DIN EN 61346-2 | S |
| • acc. to DIN EN 81346-2 | S |
| Number of switching steps | 1 |
| Number of the actuation pedals | 1 |
| Enclosure: | |
| Material of the enclosure | metal |
| Color | |
| • of the enclosure | black |
| • of top part of the enclosure | grey |
| Safety related data: | |
| B10 value with high demand rate acc. to SN 31920 | 1 000 000 |
| Proportion of dangerous failures | |
| • with low demand rate acc. to SN 31920 | 50 % |
| • with high demand rate acc. to SN 31920 | 50 % |

| | |
|--|------|
| T1 value for proof test interval or service life acc. to IEC 61508 | 20 y |
|--|------|

Mechanical data:

| | |
|------------------|-----------|
| Cable entry type | M20 x 1.5 |
|------------------|-----------|







Ambient conditions:



| | |
|---------------------|----------------|
| Ambient temperature | -25 ... +80 °C |
| • during operation | |

Installation/ mounting/ dimensions:

| | |
|---------------|--------------|
| Mounting type | screw fixing |
| Height | 265 mm |
| Width | 156 mm |
| Depth | 138 mm |

Certificates/approvals

| General Product Approval | Declaration of Conformity | Shipping Approval |
|--|---|--|
|  CCC |  EG-Konf. |  ABS |
|  CSA |  |  LRS |

| Shipping Approval | other |
|--|---|
|  PRS |  RINA |
| | Bestätigungen |
| | sonstig |

Further information

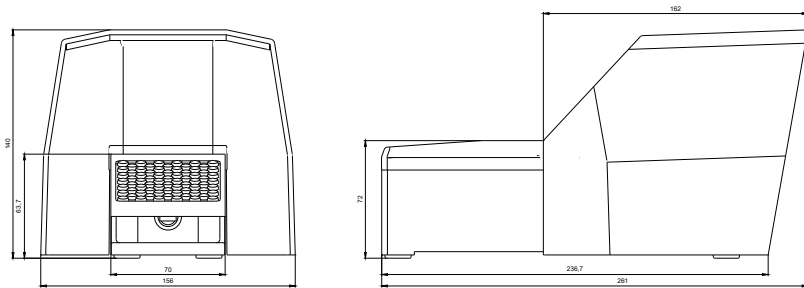
Information- and Downloadcenter (Catalogs, Brochures,...)
<http://www.siemens.com/industrial-controls/catalogs>

Industry Mall (Online ordering system)
<https://mall.industry.siemens.com/mall/en/en/Catalog/product?mlfb=3SE29020AA20>

Cax online generator
<http://support.automation.siemens.com/WW/CAXorder/default.aspx?lang=en&mlfb=3SE29020AA20>

Service&Support (Manuals, Certificates, Characteristics, FAQs,...)
<https://support.industry.siemens.com/cs/ww/en/ps/3SE29020AA20>

Image database (product images, 2D dimension drawings, 3D models, device circuit diagrams, EPLAN macros, ...)
http://www.automation.siemens.com/bilddb/cax_de.aspx?mlfb=3SE29020AA20&lang=en



last modified:

07.12.2015